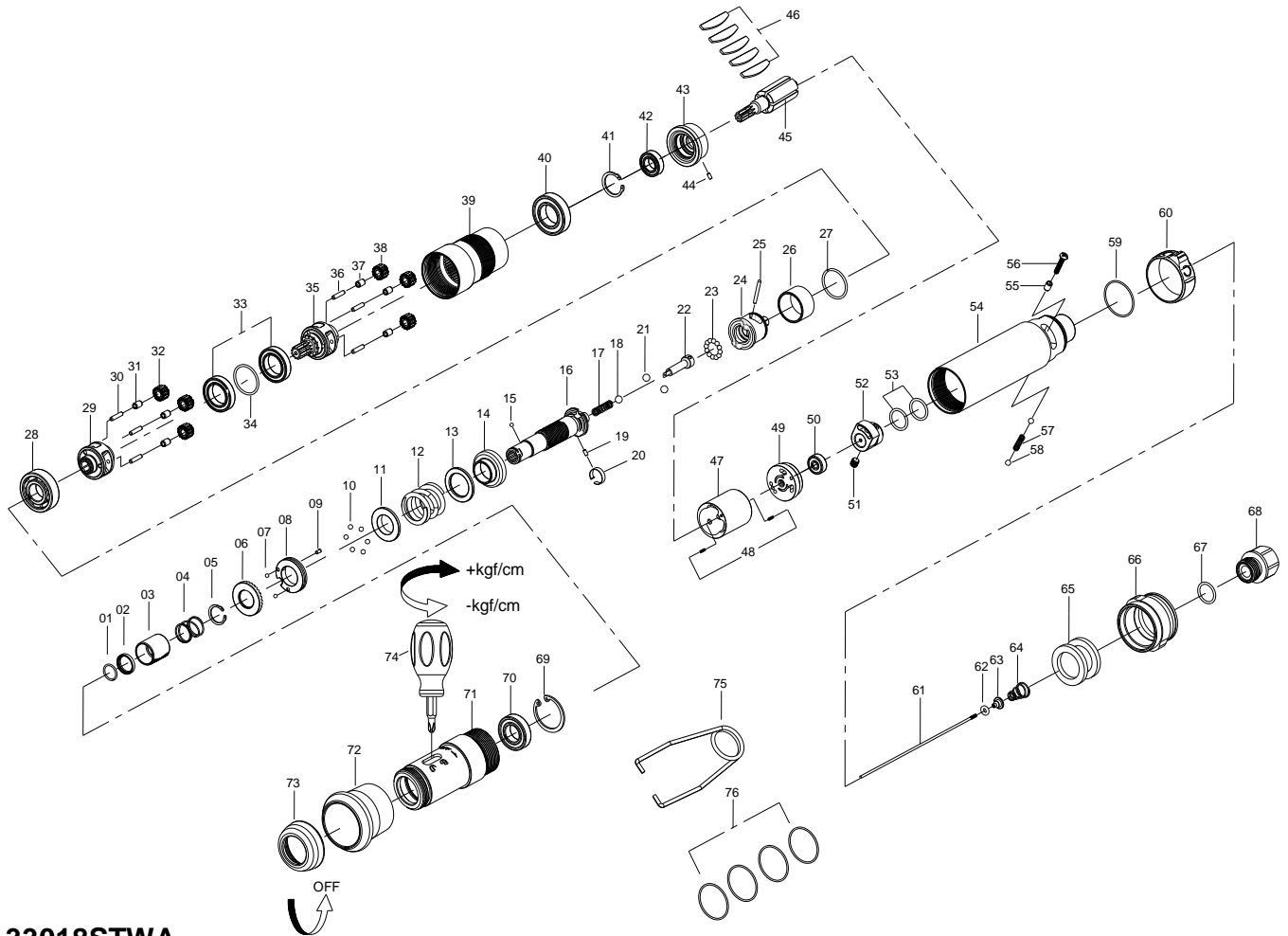


# 1/4" HEX. SUPER DUTY FULL-AUTO SHUT OFF AIR SCREWDRIVER



## 33018STWA

INDEX NO.	DESCRIPTION	REQ'D NO.	INDEX NO.	DESCRIPTION	REQ'D NO.
1	Retainer	1	40	Ball Bearing	1
2	Washer	1	41	Retainer	1
3	Release Sleeve	1	42	Ball Bearing	1
4	Spring	1	43	Front End Plate	1
5	Retainer	1	44	Pin	1
6	Adjustment Nut	1	45	Rotor	1
7	Steel Ball	2	46	Rotor Blade	5
8	Adjustment Lock Ring	1	47	Cylinder	1
9	Pin	1	48	Pin	2
10	Steel Ball	6	49	Rear End Plate	1
11	Spring Collar	1	50	Ball Bearing	1
12	Spring	1	51	Set Screw	1
13	Washer	1	52	Reverse Valve	1
14	Central Clutch	1	53	O-Ring	2
15	Steel Ball	1	54	Housing	1
16	Standard Anvil	1	55	Reverse Valve Bushing	1
17	Spring	1	56	Screw	1
18	Steel Ball	1	57	Spring	1
19	Pin	1	58	Steel Ball	2
20	Band	1	59	O-Ring	1
21	Steel Ball	2	60	Reverse Valve Knob	1
22	Pilot Pin	1	61	Throttle Valve Plunger	1
23	Steel Ball	13	62	O-Ring	1
24	Rear Clutch	1	63	Throttle Valve	1
25	Pin	1	64	Throttle Valve Spring	1
26	Ball Holder	1	65	Muffler Element	2
27	Retainer	1	66	Exhaust Deflector	1
28	Ball Bearing	1	67	O-Ring	1
29	Rear Work Spinder	1	68	Air Inlet	1
30	Pin	3	69	Retainer	1
31	Bushing	3	70	Ball Bearing	1
32	Planet Gear	3	71	Hammer Case	1
33	Ball Bearing	2	72	Nosepiece	1
34	Washer	1	73	Lock Ring	1
35	Front Work Spinder	1	74	Screwdriver	1
36	Pin	3	75	Hanger	1
37	Bushing	3	76	Color Ring	1set
38	Planet Gear	3	TK	Tune-Up Kit { incl.4.7 ( 2 ).10 ( 6 ).12.15.17.18.21 ( 2 ).23 ( 13 ).	
39	Gear Housing	1		46 ( 5 ).53 ( 2 ).57.58 ( 2 ).59.62.64.65 ( 2 ).67. }	

★ Must be Purchased in Assembly Set

20150630R1

● Recommended not to be purchased alone due to assembly difficulty