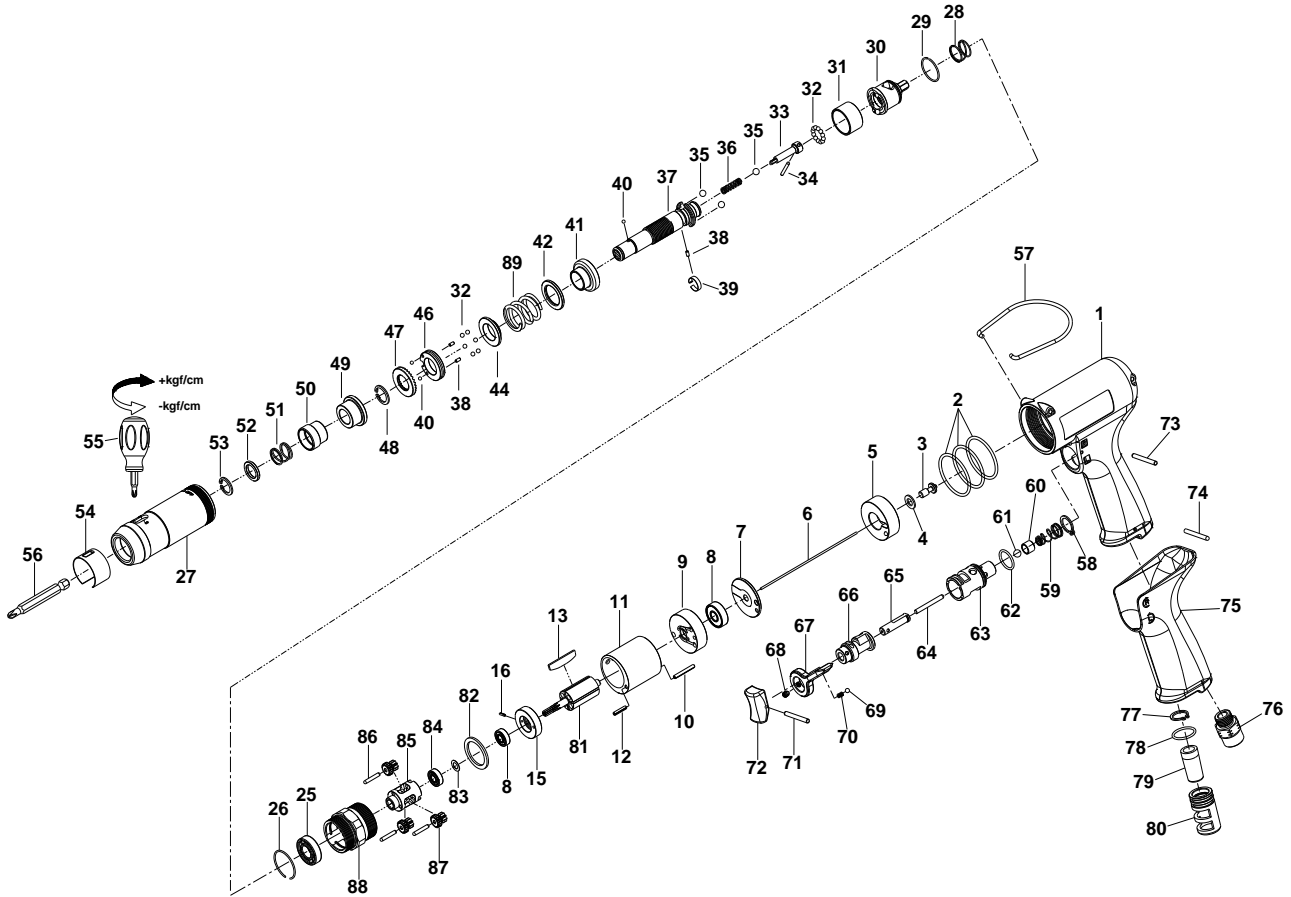


# 1/4" HEX. SUPER DUTY FULL-AUTO SHUT OFF AIR SCREWDRIVER



## 33117PLWA

INDEX NO.	DESCRIPTION	REQ'D NO.	INDEX NO.	DESCRIPTION	REQ'D NO.
01	Housing	1	52	Washer	1
02	O-Ring	3	53	Retainer	1
03	Shut-off Valve	1	54	Rubber Ring	1
04	Washer	1	55	Screwdriver	1
05	Handle Bushing	1	56	Bit ( Option )	
06	Throttle Valve Plunger	1	57	Hanger	1
07	Rear Plate Space	1	58	Retainer	1
08	Ball Bearing	2	59	Throttle Valve Spring	1
09	Rear End Plate	1	60	Throttle Valve	1
10	Spring Pin	1	61	Steel Ball	1
11	Cylinder	1	62	O-Ring	1
12	Spring Pin	1	63	Bushing	1
13	Rotor Blade	4	64	Pin	1
15	Front End Plate	1	65	Trigger Pin	1
16	Spring Pin	1	66	Reverse Valve	1
25	Ball Bearing	1	67	Reverse Knob	1
26	Retainer	1	68	Screw	1
27	Clutch Housing	1	69	Steel Ball	1
28	Spring	1	70	Spring	1
29	Retainer	1	71	Spring Pin	1
30	Rear Clutch	1	72	Trigger	1
31	Ball Holder	1	73	Pin	1
32	Steel Ball	18	74	Pin	1
33	Pilot Pin	1	75	Rubber Grip	1
34	Pin	1	76	Air Inlet	1
35	Steel Ball	3	77	Retainer	1
36	Spring	1	78	O-Ring	1
37	Standard Anvil	1	79	Muffler	1
38	Pin	3	80	Exhaust Deflector	1
39	Band	1	81	Rotor	1
40	Steel Ball	3	82	Washer	1
41	Central Clutch	1	83	Spacer	1
42	Washer	1	84	Ball Bearing	1
44	Spring Collar	1	85	Work Spindle	1
46	Adjustment Lock Ring	1	86	Pin	3
47	Adjustment Nut	1	87	Planet Gear	3
48	Retainer	1	88	Gear Housing	1
49	Bushing	1	89	Spring	1
50	Release Sleeve	1			
51	Spring	1	TK	Tune-Up Kit { incl. 2 ( 3 ).13 ( 4 ).28.32 ( 18 ).35 ( 3 ).36.40 ( 3 ).51.61.62.69.78.89 }	

★ Must be Purchased in Assembly Set

● Recommended not to be purchased alone due to assembly difficulty