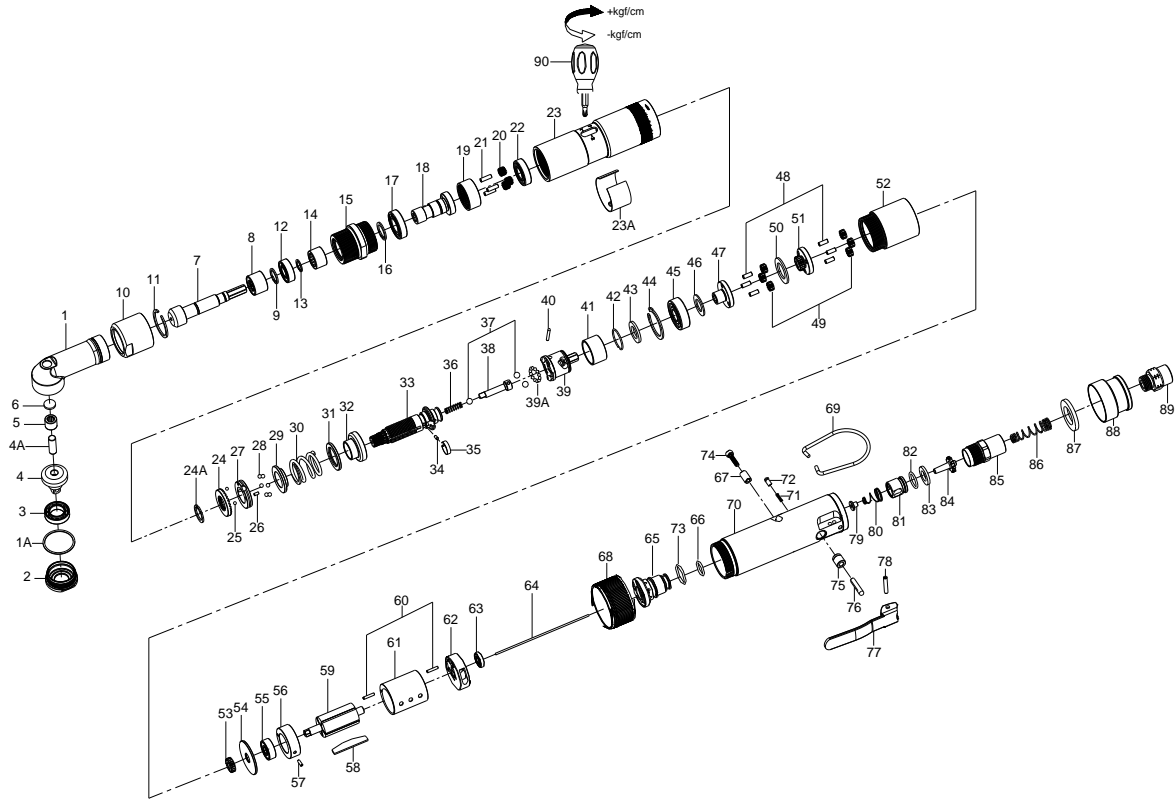


# 3/8" HEX. SUPER DUTY FULL-AUTO SHUT OFF AIR SCREWDRIVER



## 34003CGWD

| INDEX NO. | DESCRIPTION           | REQ'D NO. | INDEX NO. | DESCRIPTION  | REQ'D NO. |
|-----------|-----------------------|-----------|-----------|--|-----------|
| 1         | Housing               | 1         | 44        | Retainer   | 1         |
| 1A        | Washer                | 1         | 45        | Ball Bearing   | 1         |
| 2         | Housing Cover         | 1         | 46        | Washer   | 1         |
| 3         | Ball Bearing          | 1         | 47        | Front Gear Head  | 1         |
| 4         | Standard Anvil        | 1         | 48        | Pin  | 6         |
| 4A        | Pin                   | 1         | 49        | Planet Gear  | 6         |
| 5         | Bearing               | 1         | 50        | Washer   | 1         |
| 6         | Housing Plate         | 1         | 51        | Rear Gear Head   | 1         |
| 7         | Driving Shaft Gear    | 1         | 52        | Gear Housing   | 1         |
| 8         | Bearing               | 1         | 53        | Pinion Gear  | 1         |
| 9         | Retainer              | 1         | 54        | Washer   | 1         |
| 10        | Coupling Nut          | 1         | 55        | Ball Bearing   | 1         |
| 11        | Retainer              | 1         | 56        | Front End Plate  | 1         |
| 12        | Ball Bearing          | 1         | 57        | Pin  | 1         |
| 13        | Retainer              | 1         | 58        | Rotor Blade  | 5         |
| 14        | Bearing               | 1         | 59        | Rotor  | 1         |
| 15        | Connecting Screw      | 1         | 60        | Pin  | 2         |
| 16        | Retainer              | 1         | 61        | Cylinder   | 1         |
| 17        | Ball Bearing          | 1         | 62        | Rear End Plate   | 1         |
| 18        | Work Spindle          | 1         | 63        | Ball Bearing   | 1         |
| 19        | Ring Gear             | 1         | 64        | Throttle Valve Plunger   | 1         |
| 20        | Planet Gear           | 3         | 65        | Reverse Valve  | 1         |
| 21        | Pin                   | 3         | 66        | O-Ring   | 1         |
| 22        | Ball Bearing          | 1         | 67        | Bushing  | 1         |
| 23        | Clutch Housing        | 1         | 68        | Everse Knob  | 1         |
| 23A       | Rubber Ring           | 1         | 69        | Hanger   | 1         |
| 24        | Adjustment Nut        | 1         | 70        | Motor Case   | 1         |
| 24A       | Retainer              | 1         | 71        | Spring   | 1         |
| 25        | Steel Ball            | 2         | 72        | Pin  | 1         |
| 26        | Pin                   | 1         | 73        | O-Ring   | 1         |
| 27        | Adjustment Lock Ring  | 1         | 74        | Screw  | 1         |
| 28        | Steel Ball            | 6         | 75        | Bushing  | 1         |
| 29        | Spring Collar         | 1         | 76        | Valve Stem   | 1         |
| 30        | Torque Setting Spring | 1         | 77        | Trigger  | 1         |
| 31        | Spacer                | 1         | 78        | Spring Pin   | 1         |
| 32        | Central Clutch        | 1         | 79        | Handle Bushing   | 1         |
| 33        | Cam Shaft             | 1         | 80        | Spring   | 1         |
| 34        | Pin                   | 1         | 81        | Bushing  | 1         |
| 35        | Band                  | 1         | 82        | O-Ring   | 1         |
| 36        | Spring                | 1         | 83        | Washer   | 1         |
| 37        | Steel Ball            | 3         | 84        | Throttle Valve   | 1         |
| 38        | Pilot Pin             | 1         | 85        | Air Inlet  | 1         |
| 39        | Rear Clutch           | 1         | 86        | Spring   | 1         |
| 39A       | Steel Ball            | 12        | 87        | Muffler Element  | 1         |
| 40        | Pin                   | 1         | 88        | Exhaust Deflector  | 1         |
| 41        | Ball Holder           | 1         | 89        | Air Inlet  | 1         |
| 42        | Retainer              | 1         | 90        | Screwdriver  | 1         |
| 43        | Washer                | 1         | TK        | Tune-Up Kit { incl. 25 ( 2 ), 28 ( 6 ), 30, 36, 37 ( 3 ), 39A ( 12 ), 58 ( 5 ), 71, 80, 82, 86 } | 1         |

★ Must be Purchased in Assembly Set

● Recommended not to be purchased alone due to assembly difficulty

20140912R1