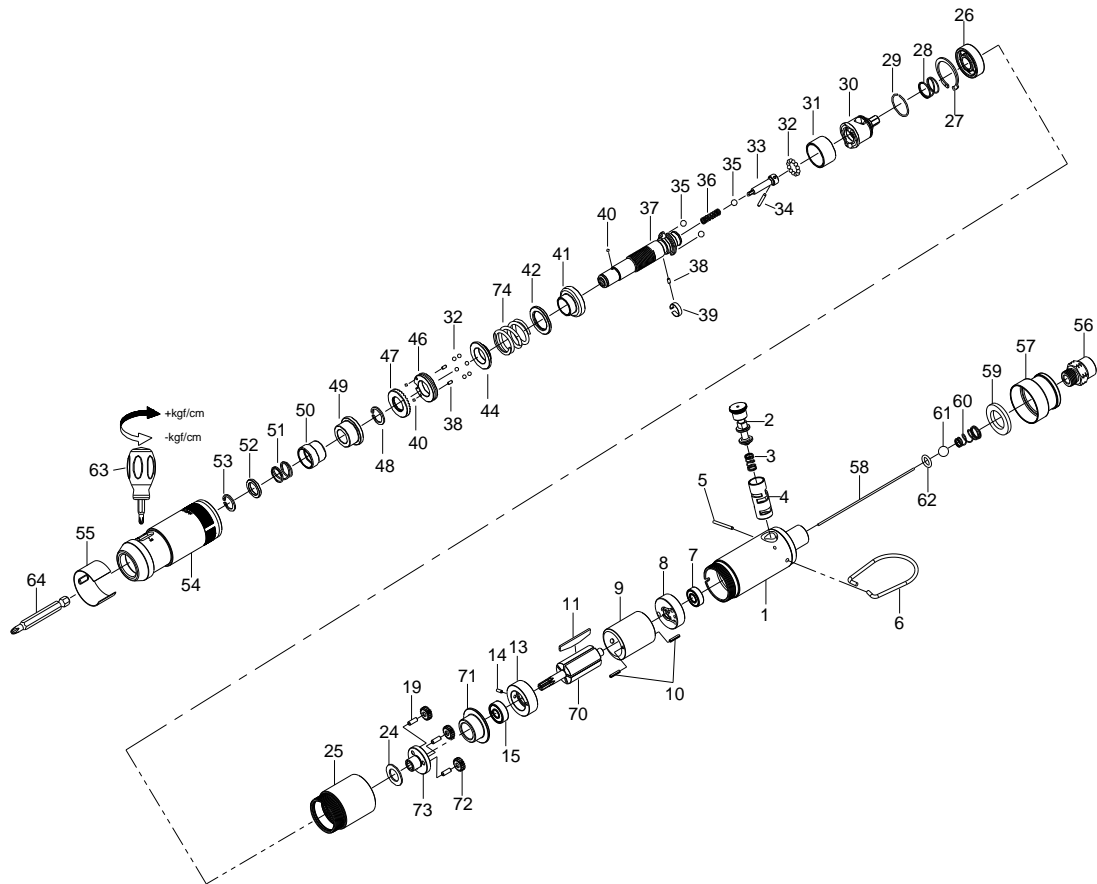


1/4" HEX. SUPER DUTY FULL-AUTO SHUT OFF AIR SCREWDRIVER



34021STWA

INDEX NO.	DESCRIPTION	REQ'D NO.	INDEX NO.	DESCRIPTION	REQ'D NO.
★ 1	Housing Assembly (incl. 4)	1	40	Steel Ball	3
2	Reverse Valve	1	41	Cam Ring	1
3	Spring	1	42	Washer	1
● 4	Reverse Valve Bushing	1	44	Spring Holder	1
5	Pin	1	46	Adjustment Nut	1
6	Hanger	1	47	Adjustment Lock Ring	1
7	Bearing	1	48	Retainer	1
8	Rear End Plate	1	49	Bushing	1
9	Cylinder	1	50	Bit Sleeve	1
10	Pin	2	51	Spring	1
11	Rotor Blade	5	52	Washer	1
13	Front End Plate	1	53	Retainer	1
14	Pin	1	54	Hammer Case	1
15	Bearing	1	55	Adjustment Cover	1
19	Pin	6	56	Air Inlet	1
24	Washer	1	57	Exhaust Deflector	1
25	Gear Housing	1	58	Throttle Valve Plunger	1
26	Bearing	1	59	Muffler Element	1
27	Retainer	1	60	Spring	1
28	Spring	1	61	Steel Ball	1
29	Snap Ring	1	62	O-Ring	1
30	Cam Spindle	1	63	Screwdriver	1
31	Ball Holder	1	64	Bit (Option)	1
32	Steel Ball	18	70	Rotor	1
33	Driving Shaft	1	71	Second Gear Cage Spacer	1
34	Pin	1	72	Planet Gear	3
35	Steel Ball	3	73	Second Gear Cage	1
36	Spring	1	74	Spring	1
37	Standard Anvil	1	TK	Tune-Up Kit { incl. 3.7 .11 (5) .26.28.30.32 (18) .33. 34.35 (3) .36.38 (3) .39.40 (3) ..47.51.58.59. 60.61.62.74 }	
38	Pin	3			
39	Band	1			

★ Must be Purchased in Assembly Set

● Recommended not to be purchased alone due to assembly difficulty