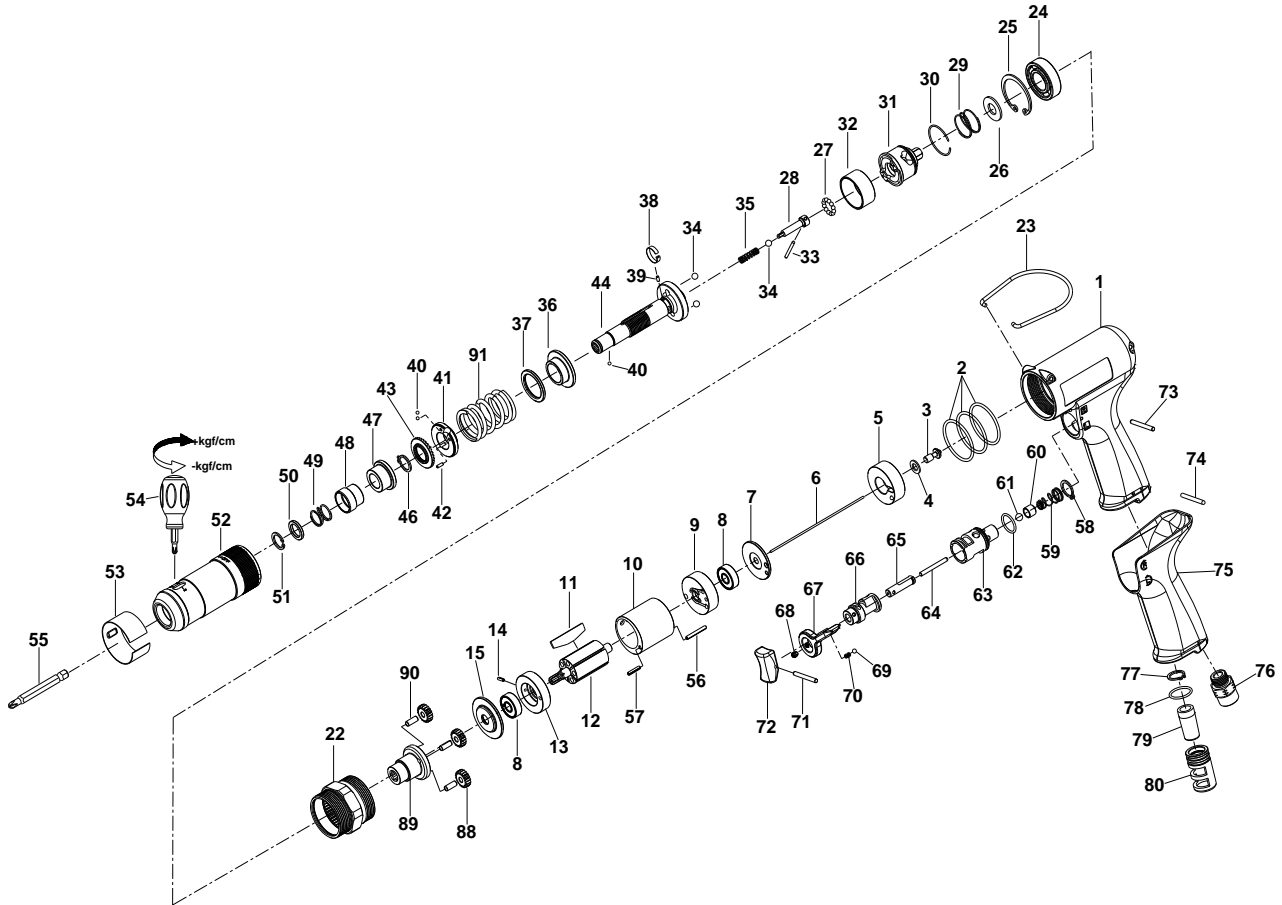


# 1/4" HEX. SUPER DUTY FULL-AUTO SHUT OFF AIR SCREWDRIVER



## 35117PLWA

INDEX NO.	DESCRIPTION	REQ'D NO.	INDEX NO.	DESCRIPTION	REQ'D NO.
01	Housing	1	47	Bushing	1
02	O-Ring	3	48	Release Sleeve	1
03	Shut-off Valve	1	49	Spring	1
04	Washer	1	50	Washer	1
05	Handle Bushing	1	51	Retainer	1
06	Throttle Valve Plunger	1	52	Clutch Housing	1
07	Rear Plate Space	1	53	Rubber Ring	1
08	Ball Bearing	2	54	Torque Controlled Screw Drive	1
09	Rear End Plate	1	55	Bit ( Option )	
10	Cylinder	1	56	Spring Pin	1
11	Rotor Blade	5	57	Spring Pin	1
12	Rotor	1	58	Retainer	1
13	Front End Plate	1	59	Throttle Valve Spring	1
14	Spring Pin	1	60	Throttle Valve	1
15	Washer	1	61	Steel Ball	1
22	Gear Housing	1	62	O-Ring	1
23	Hanger	1	63	Bushing	1
24	Ball Bearing	1	64	Pin	1
25	Retainer	1	65	Trigger Pin	1
26	Washer	1	66	Reverse Valve	1
27	Steel Ball	12	67	Reverse Knob	1
28	Pilot Pin	1	68	Screw	1
29	Spring	1	69	Steel Ball	1
30	Retainer	1	70	Spring	1
31	Rear Clutch	1	71	Spring Pin	1
32	Ball Holder	1	72	Trigger	1
33	Pin	1	73	Pin	1
34	Steel Ball	3	74	Pin	1
35	Spring	1	75	Rubber Grip	1
36	Central Clutch	1	76	Air Inlet	1
37	Washer	1	77	Retainer	1
38	Band	1	78	O-Ring	1
39	Pin	1	79	Muffler	1
40	Steel Ball	3	80	Exhaust Deflector	1
41	Adjustment Lock Ring	1	88	Planet Gear	3
42	Pin	1	89	Work Spindle	1
43	Adjustment Nut	1	90	Pin	3
44	Standard Anvil	1	91	Torque Setting Spring	1
46	Retainer	1	TK	Tune-Up Kit { incl.2 ( 3 ),11 ( 5 ),27 ( 12 ),29,34 ( 3 ),35,40 ( 3 ),49,59,61,62,69,70,78,91 }	

★ Must be Purchased in Assembly Set

● Recommended not to be purchased alone due to assembly difficulty