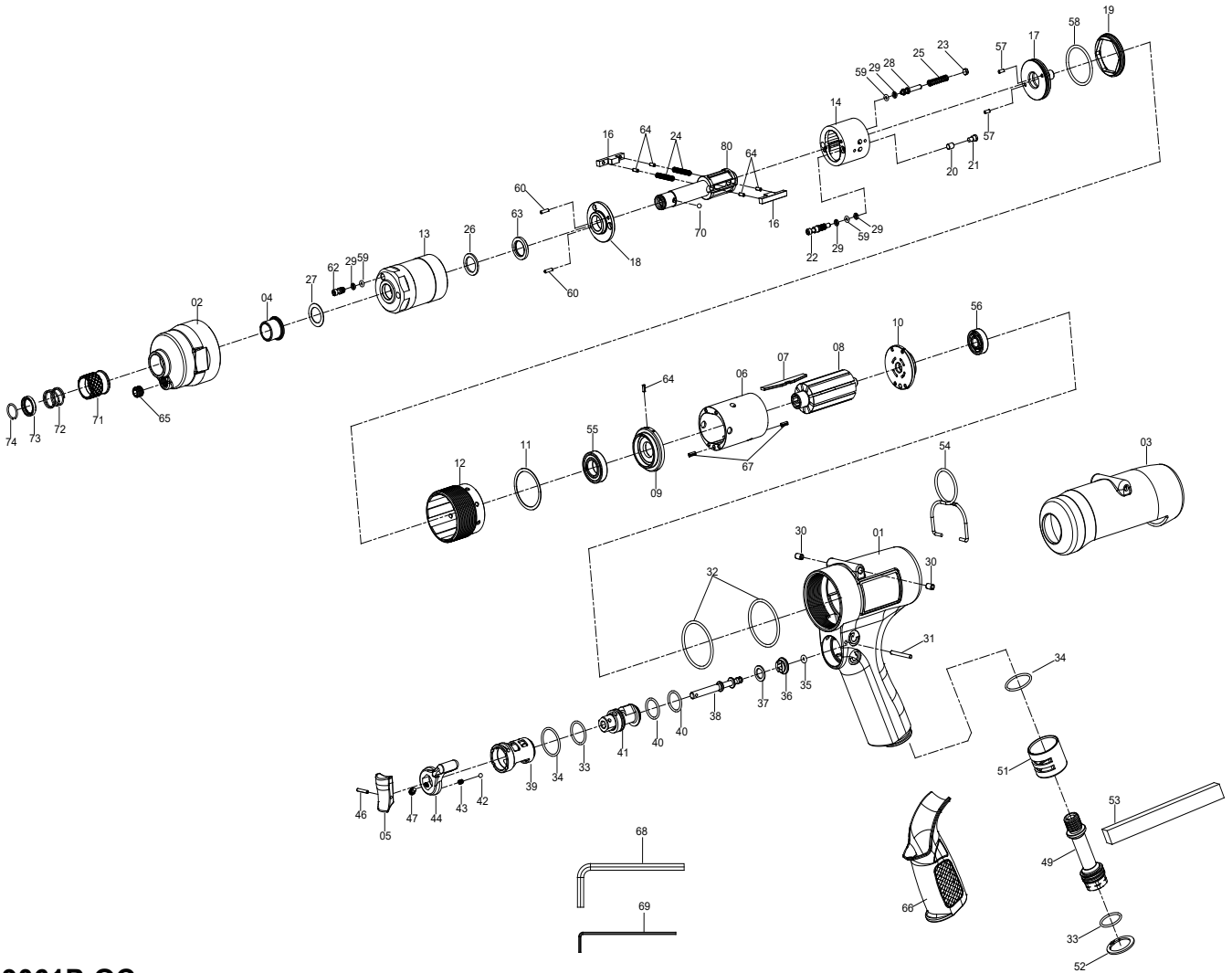


1/4" HEX. OIL-PULSE TOOL



9061P-QC

INDEX NO.	DESCRIPTION	REQ'D NO.	INDEX NO.	DESCRIPTION	REQ'D NO.
★ 01	Motor Casing Assembly { incl.30 (2) }	1	37	Valve Plate	1
★ 02	Clutch Housing Assembly (incl.04.65)	1	38	Throttle Valve Pin	1
03	Protective Cover	1	39	Reverse Valve Bushing	1
● 04	Case Bushing	1	40	O-Ring	2
05	Throttle Lever	1	41	Revere Valve	1
★ 06	Cylinder Assembly { incl.67 (2) }	1	42	Ball	1
07	Blade	9	43	Reverse Lever Spring	1
08	Rotor	1	44	Reverse Lever	1
★ 09	Front End Plate Assembly { incl.55.64 (1) }	1	46	Spring Pin	1
★ 10	Rear End Plate Assembly (incl.56)	1	47	Screw	1
11	Motor Spacer	1	49	Inlet Bushing	1
12	Joint	1	51	Muffler Cover	1
13	Liner Casing	1	52	Inverted Retaining Ring	1
14	Liner	1	53	Filter	1
16	Driving Blade	2	54	Suspension Ring	1
17	Top Cap	1	● 55	Ball Bearing	1
18	End Cap	1	● 56	Ball Bearing	1
19	Top Nut	1	57	Pin	2
20	Valve	1	58	O-Ring	1
21	Spacer	1	59	O-Ring	3
22	Adjustment Screw	1	60	Pin	2
23	Piston Cap	1	62	Oil Screw	1
24	Blade Spring	2	63	B-Ring	1
25	Piston Spring	1	● 64	Spring Pin	5
26	Supporting Ring	1	● 65	Screw	1
27	Thrust Plate	1	66	Grip Cover	1
28	Oil Piston	1	● 67	Spring Pin	2
29	Supporting Ring	4	68	4mm Hexagon Wrench	1
● 30	Spring Pin	2	69	2mm Hexagon Wrench	1
31	Pin	1	70	Ball	1
32	O-Ring	2	71	Ball Stopper	1
33	O-Ring	2	72	Ball Stopper Spring	1
34	O-Ring	2	73	Spring Stopper	1
35	O-Ring	1	74	Retainer Ring	1
36	Throttle Valve	1	80	QC Spindle	1

★ Must be Purchased in Assembly Set

● Recommended not to be purchased alone due to assembly difficulty

20180913R1