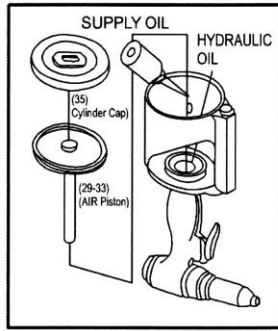


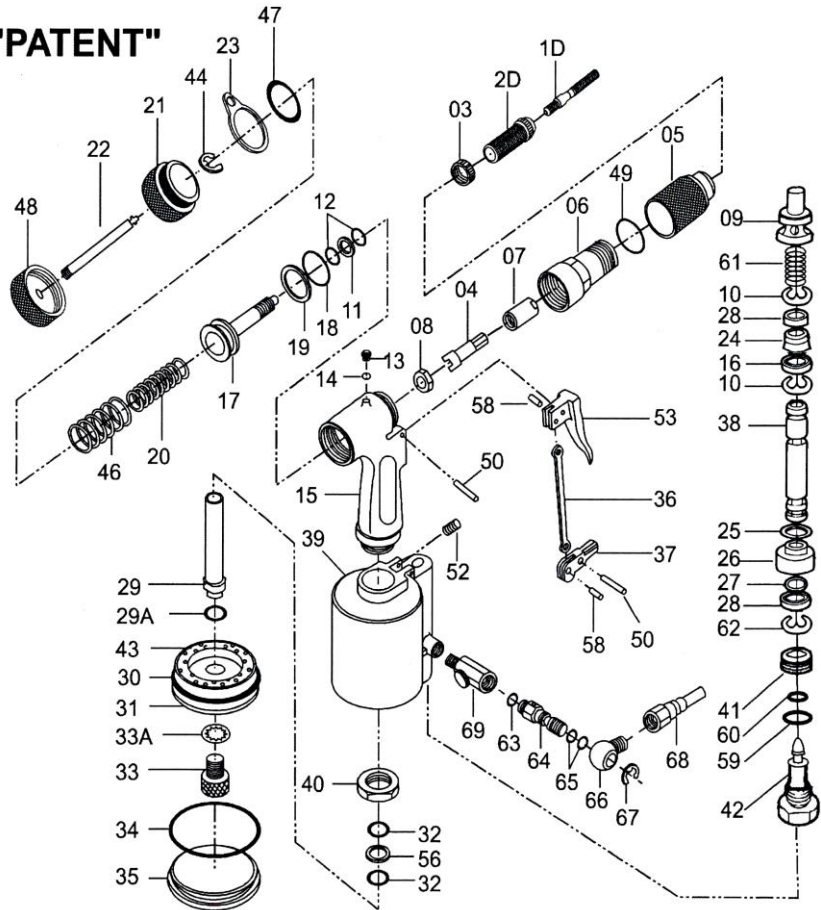
# HEAVY DUTY AIR PULL SETTER

## ENERGY SAVING TYPE "PATENT"

### ADDING OIL METHOD



PLEASE ALWAYS ENSURE THE PART NO. 13  
AIR BLOW PLUG TIGHT THREADED



4258

INDEX NO.	DESCRIPTION	REQ'D NO.	INDEX NO.	DESCRIPTION	REQ'D NO.
01A	Screw Mandrel M3 (Option)	1	29	Air Piston Rod	1
01B	Screw Mandrel M4	1	29A	O-Ring	1
01C	Screw Mandrel M5	1	30	O-Ring	1
01D	Screw Mandrel M6	1	31	Air Piston	1
01E	Screw Mandrel M8	1	32	O-Ring	2
01F	Screw Mandrel M10	1	33	Rock Nut	1
02A	Stroke Set Adaptor M3(Option)	1	33A	Washer	1
02B	Stroke Set Adaptor M4	1	34	O-Ring	1
02C	Stroke Set Adaptor M5	1	35	Cylinder Cap	1
02D	Stroke Set Adaptor M6	1	36	Trigger Rod	1
02E	Stroke Set Adaptor M8	1	37	Trigger Lever	1
02F	Stroke Set Adaptor M10	1	38	Valve Tube	1
03	Nose Nut	1	39	Air Cylinder	1
04	Spindle Guide	1	40	Frame Lock Nut	1
05	Stroke Adaptor Cover	1	41	Nipple Screw	1
06	Connector Housing	1	42	End Plug	1
07	Spindle Case	1	43	Rubber Cushion	1
08	Spindle Cade Nut	1	44	E-Ring	1
09	Valve Pusher	1	46	Return Spring (Big)	1
10	E-Ring	2	47	Frame Cap Ring	1
11	Back Up Ring	1	48	Safety Cap Nut	1
12	O-Ring	2	49	O-Ring	1
13	Air Blow Plug	1	50	Pin	2
14	Packing Seal	1	52	Lock Screw	1
15	Frame	1	53	Trigger (Long)	1
16	Collar for Valve Tube	1	53A	Trigger (Short)(Option)	1
17	Oil Piston	1	54	Spanner 8,15,24 m/m	1
18	O-Ring	1	55	Spanner Gauge 9,14,15,19 m/m	1
19	Back Up Ring	1	56	Back Up Ring	1
20	Return Spring (Small)	1	57	Hex Wrench M5	1
21	Frame Cap	1	58	Trigger Pin	2
22	Return Tube	1	59	O-Ring	1
23	Hanger Clip	1	60	Seal	1
24	Air Valve Seal	1	61	Pusher Spring	1
25	O-Ring	1	62	E-Ring	1
26	Valve Seat	1	63~68	Universal Joint Accessory (360°)(Option)	1set
27	O-Ring	1			
28	Valve Collar Washer	2	69	Regulator for M3 And M4(Option)	1