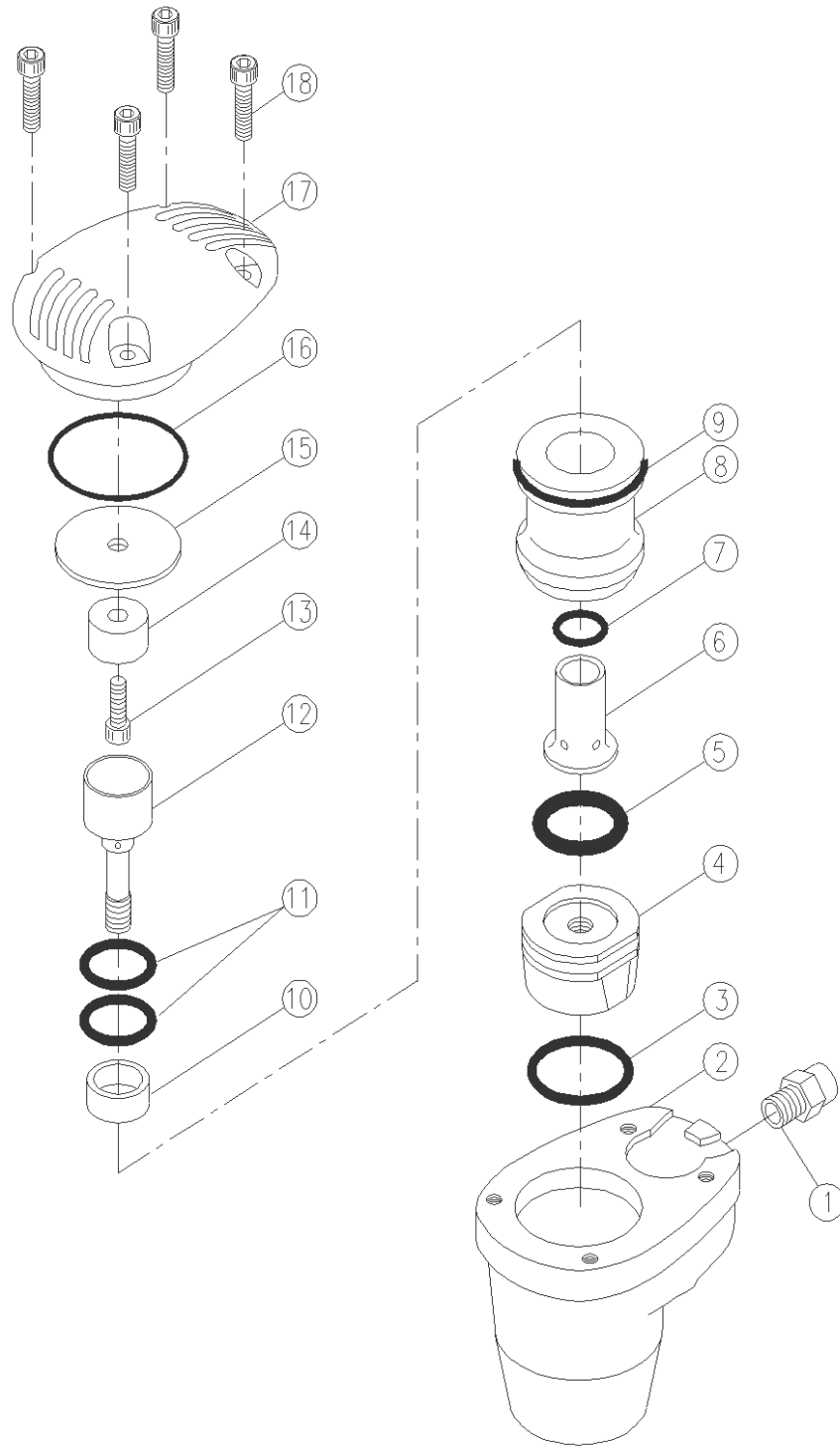
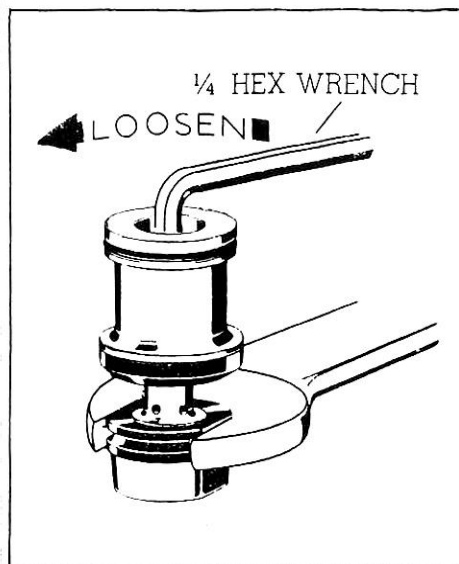


HEAVY DUTY AIR AUTO HAMMER



4787

INDEX NO.	DESCRIPTION	REQ'D NO.	INDEX NO.	DESCRIPTION	REQ'D NO.
01	Air Inlet	1	08	Valve	1
02	Housing	1	09	O-Ring	1
03	O-Ring	1	10	Bumper	1
04	Hammer Tip(Super Soft Plastic)(Option)	1	11	O-Ring	2
	Hammer Tip(Soft Plastic)(Option)	1	12	Stem	1
	Hammer Tip(Medium Plastic)	1	13	Screw	1
	Hammer Tip(Hard Plastic)(Option)	1	14	Plug	1
	Hammer Tip(Aluminium)	1	15	Exhaust Seat	1
	Hammer Tip(Steel)(Option)	1	16	O-Ring	1
05	Stroke Control Spacer	1	17	Cap	1
06	Sleeve	1	18	Screw	4
07	O-Ring	1			



Changing hammer tips.

- a) Remove cap and slide, out valve assembly and hammer tip. Remove O-Ring from hammer tip.
 - b) Hold hammer tip with wrench (or in vise) and use 1/4" hex, wrench to remove hammer tip.
 - c) Fit O-Ring to new hammer tip.
 - d) Reassemble tool
- Note: Tighten assembly securely when installing hammer tip.

OPERATING INSTRUCTIONS

AIR PRESSURE

The AUTOMATIC HAMMER requires a minimum air pressure of 25 lbs and a maximum of 125 lbs. Operation above 125 lbs, air pressure will cause internal damage.

AIR LINES AND FITTINGS

The hose and fitting size of the automatic hammer is 1/4" Although, the tool uses only 2 To 4 C.F.M. at maximum operating speed, you should insure maximum air flow for proper installation, If air flow is restricted it is recommended that you install a 3 to 5 gal, (10-20 litres) surge tank within 15 feet (5M) of the work area.

AIR FILTER AND LUBRICATOR

Since the automatic hammer tool is a high speed pneumatic tool, troublefree use is best obtained by using a 3/8" or larger filter and lubricator.

Clean the filter from time to time and empty the water container every day, set the pressure regulator according to your requirements.

Regulate the lubricator to get two drops of oil per minute which can be checked at the show glass.

Caution: Warranty not honoured unless tool is used with filter and lubricator.

OPERATION

Remember, your automatic hammer tool is an automatic hammer and not a gun, Therefore it has no trigger, It starts automatically when the hammer tip is pressed against the workpiece. The operator need only apply a very slight amount of pressure to activate the tool.

OPERATOR TECHNIQUE

Single hammer blow: A light tap of hammer tip against the workpiece and instant withdrawal away from workpiece will permit a single blow.

Multiple hammer blows: A light tap of hammer tip against the workpiece and continued light pressure against workpiece will permit continuous hammering.

Hammer force: This is controlled by your air line pressure. The tool will operate from 25 P.S.I. to 125 P.S.I. and should be regulated to what is best for your particular application.

Cleaning

When cleaning your automatic hammer tool, avoid the use of solvents on all rubber parts. Do not use other than our special oil for pneumatic tools in order to prevent damages.