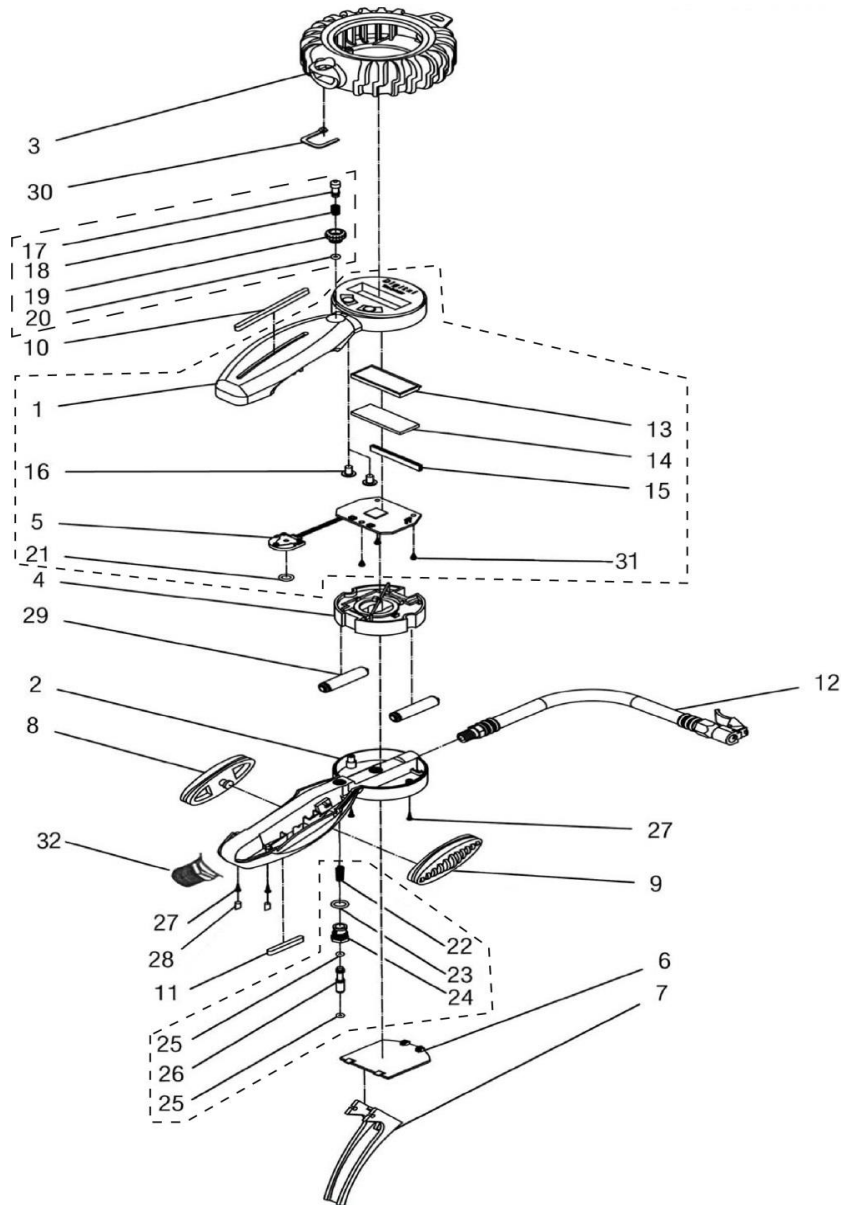


# DIGITAL TIRE INFLATOR



79D01

INDEX NO.	DESCRIPTION	REQ'D NO.	INDEX NO.	DESCRIPTION	REQ'D NO.
01	Gun Body-Upper Case	1	19	Air Release Valve Seat	1
02	Gun Body-Lower Case	1	20	O-Ring	1
03	Gauge Protector	1	21	O-Ring	1
04	Battery Holder	1	22	Spring	1
05	Printed Circuit Board	1	23	O-Ring	1
06	Battery Compartment Cover	1	24	Trigger Valve Seat	1
07	Trigger Level	1	25	O-Ring	2
08	Handle Grip	1	26	Trigger Valve Stem	1
09	Handle Grip	1	27	Screw	4
10	Handle Grip	1	28	Recess Plugs	2
11	Handle Grip	1	29	Battery	2
12	Rubber Hose With Clip Chuck	1	30	Gauge Protector Tie	1
13	LCD Screen	1	31	Screw	3
14	Backlit For LCD	1	32	Inlet Plug Adapter	1
15	LCD Conductive Rubber	1	TK1	Gun Body Kit (01,05,13,14,15,16×2,21,31×3)	1 set
16	Silicon Button	2	TK2	Air Release Valve Kit (17,18,19,20)	1 set
17	Air Release Valve Stem	1	TK3	Trigger Valve Kit (22,23,24,25×2,26)	1 set
18	Spring	1			

0000.00.00

2019.02.22 2019.08.05

# DIGITAL TIRE GAUGE

Proper tire pressure is critical to the safe operation of your vehicle. Accurate pressure is critical to maximizing performance and tread life. Proper tire pressure improves/ maximizes gas mileage. This new digital tire inflator combines the ease of use with accurate reading and/or setting of pressure on almost all pneumatic tires up to 160psi.



**WARNING: USE ONLY WITH REGULATED AIR SYSTEMS.**

**Do not exceed 200 PSI maximum.**

Check tire pressure often while inflation. Inflate to tire manufacturer's recommended pressure only. Over-inflation and under-inflation of tires both create potentially hazardous driving conditions. Wearing impact-resistant protective eyewear while inflating tires is recommended.

**Always check and set pressure when the tire is cold.**

## ■ FUNCTION

1.) Dual button a and b:

- a.) ON.OFF/LIGHT button: quick push power on/off; push and hold for 3 seconds to turn on the light.
- b.) UNIT/RESET button: quick push switch the pressure units Psi/Bar/KgCm<sup>2</sup>/Kpa; push and hold for 3 seconds to re-set to zero.

(please refer to the blow step RESET TO ZERO)

- 2.) The unit can be turned off at any time during use to save power. Just push the on/off button.
- 3.) If the unit is not manually turned off it will automatically turn itself off after leave the button operation off approx. 180 seconds.
- 4.) Rigid fiber glass reinforcement ABS body, rigid fiber glass reinforcement POM trigger, soft plastic bumper and handle grip for shock absorb and non-slip.

## ■ SPECIFICATIONS

- 1.) Pressure increments:0.5 PSI / 0.05 Bar.
- 2.) LCD screen operating limits:  
operating temperature: -10 to 45° Celsius.  
storage temperature range: -20 to 70° Celsius.
- 3.) Functional operating range: 200 PSI , 0-14.0 Bar , 0-14.0 kg/cm<sup>2</sup> , 0-1,400 Kpa
- 4.) Accuracy: Measuring Range form 0-200 PSI (+/- 2%, @25°C)

## ■ RESET TO ZERO

- 1.) Push/ hold the (b) button for 3 seconds to start calibration. The display will read --.- during this time. The display will then reset to "0.0"
- 2.) Only calibrate when the unit is disconnected from the air supply. Push the "air release" button to be sure no air is in the unit.

## ■ TO REPLACE THE BATTERY

- 1.) Carefully push away the battery cover.
- 2.) Pick up the old battery and replace with a new one (AAA size 1.5V battery). Pay careful attention to correct battery orientation (+/-).