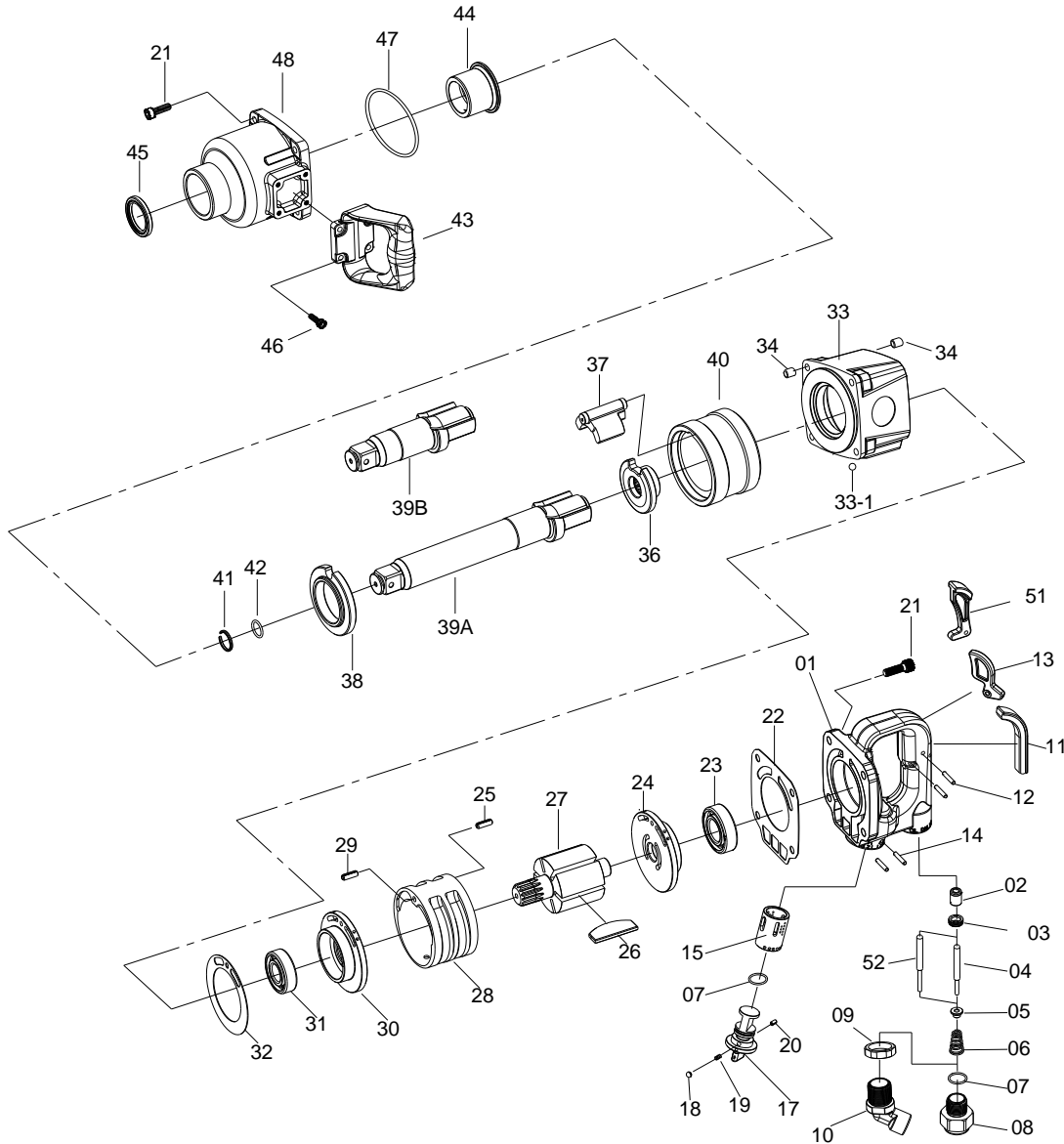


1" SQ.DR. SUPER DUTY IMPACT WRENCH



1840/1840-6

| INDEX NO. | DESCRIPTION | REQ'D NO. | INDEX NO. | DESCRIPTION | REQ'D NO. |
|-----------|---|-----------|-----------|---|-----------|
| ★ 1 | Backhead Assembly (incl.2.15) | 1 | 28 | Cylinder | 1 |
| ● 2 | Bushing | 1 | 29 | Spring Pin | 1 |
| 3 | Throttle Valve Seat | 1 | ★ 30 | Front End Plate Assembly (incl.31) | 1 |
| 4 | Throttle Valve Plunger (For Inside Trigger) | 1 | ● 31 | Ball Bearing | 1 |
| 5 | Throttle Valve | 1 | 32 | Gasket | 1 |
| 6 | Spring | 1 | ★ 33 | Housing Assembly { incl.33-1 (4).34 (8) } | 1 |
| 7 | O-Ring | 2 | ● 33-1 | Steel Ball | 4 |
| 8 | Straight Air Inlet (Option) | 1 | ● 34 | Heli-Coil | 8 |
| ● 9 | Lock Nut (Option) | 1 | 36 | Cam | 1 |
| ★ 10 | Air Inlet Assembly (incl.9) (Option) | 1 | 37 | Hammer | 1 |
| 11 | Rubber Cap (For Inside Trigger) | 1 | 38 | Axle Bushing | 1 |
| 12 | Pin | 2 | 39A | 6" Extended Anvil (For KI-1840-6) | 1 |
| 13 | Inside Trigger (Option) | 1 | 39B | Standard Anvil (For KI-1840) | 1 |
| 14 | Spring Pin | 2 | 40 | Hammer Frame | 1 |
| ● 15 | Reverse Valve Bushing | 1 | 41 | Socket Retainer | 1 |
| ★ 17 | Reverse Valve Assembly (incl.20) | 1 | 42 | O-Ring | 1 |
| 18 | Steel Ball | 1 | 43 | Side Spade Handle | 1 |
| 19 | Spring | 1 | 44 | Bushing | 1 |
| ● 20 | Spring Pin | 1 | 45 | Oil Seal | 1 |
| 21 | Screw | 8 | 46 | Screw | 4 |
| 22 | Gasket | 1 | 47 | O-Ring | 1 |
| ● 23 | Ball Bearing | 1 | 48 | Hammer Case | 1 |
| ★ 24 | Rear End Plate Assembly (incl.23) | 1 | 51 | Outside Trigger (Option) | 1 |
| 25 | Spring Pin | 1 | 52 | Throttle Valve Plunger (For Outside Trigger) | 1 |
| 26 | Rotor Blade | 6 | | | |
| 27 | Rotor | 1 | TK | Tune-Up Kit { incl.6.7 (2).18.19.22.26 (6).32.33-1 (4).41.42.47 } | |

★ Must be Purchased in Assembly Set

● Recommended not to be purchased alone due to assembly difficulty

20131009R2