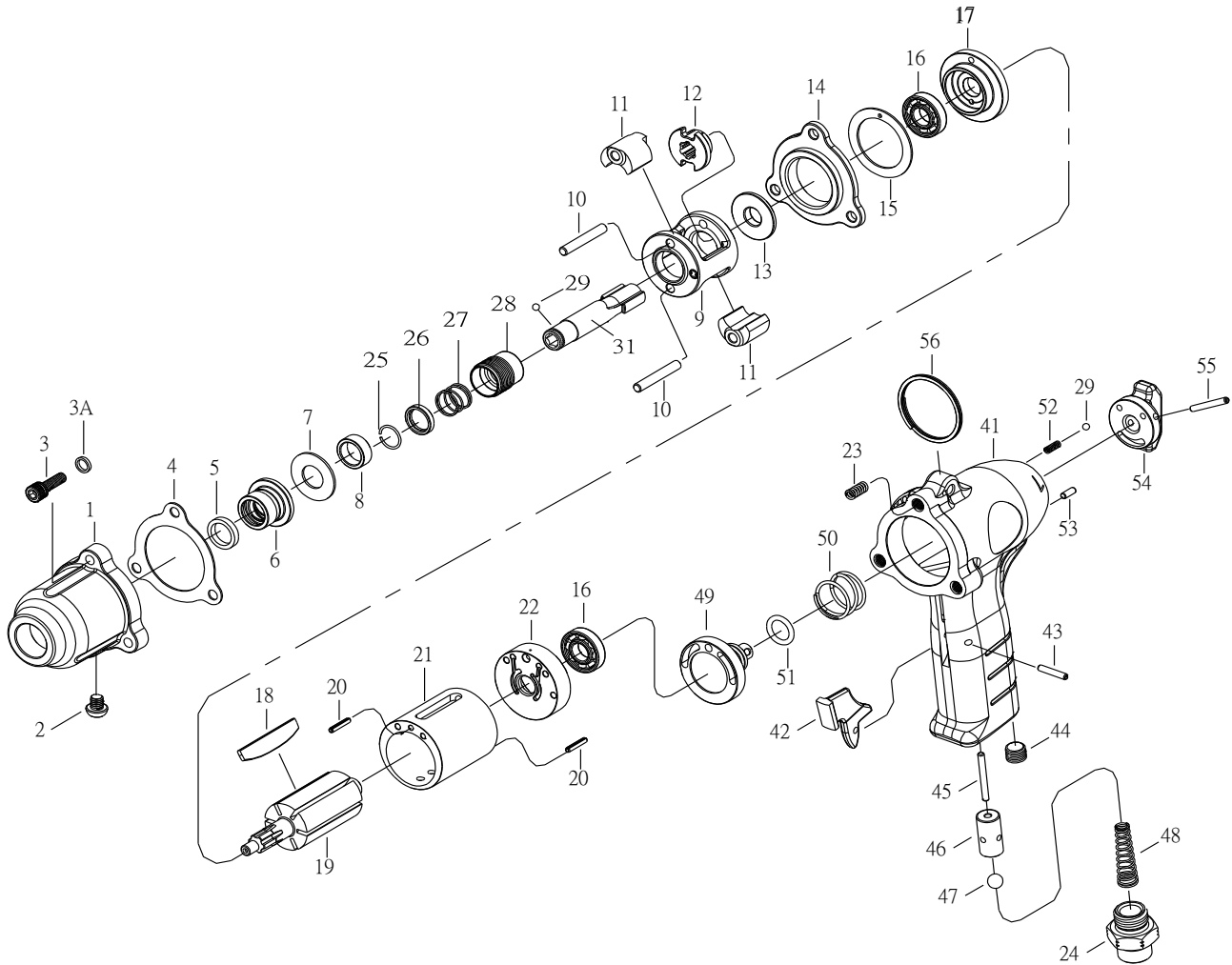


1/4" HEX. SUPER DUTY AIR SCREWDRIVER



3202P-QL

INDEX NO.	DESCRIPTION	REQ'D NO.	INDEX NO.	DESCRIPTION	REQ'D NO.
1	Hammer Case	1	24	Air Inlet	1
2	Screw	1	25	Socket Retainer	1
3	Screw	3	26	Washer	1
3A	Washer	3	27	Spring	1
4	Gasket	1	28	Release Sleeve	1
5	Felt Ring	1	29	Steel Ball	2
6	Bushing	1	31	Anvil	1
7	Spacer	1	★41	Housing Assembly { incl.23 (3).46 }	1
8	Axle Bushing	1	42	Trigger	1
9	Hammer Frame	1	43	Trigger Pin	1
10	Hammer Pin	2	44	Set Screw	1
11	Hammer	2	45	Pin	1
12	Hammer cam	1	46	Throttle Valve Seat	1
13	Spacer	1	47	Nylon Ball	1
14	Hammer Case Pivot	1	48	Spring	1
15	Gasket	1	49	Reverse Valve	1
16	Ball Bearing	2	50	Spring	1
17	Front End Plate	1	51	O-Ring	1
18	Rotor Blade	6	52	Ball Spring	1
19	Rotor	1	53	Pin	1
20	Spring Pin	2	54	Reverse Knob	1
21	Cylinder	1	55	Spring Pin	1
22	Rear End Plate	1	56	Hanger	1
23	Heli-Coil	3	TK	Tune-Up Kit { 4.15.16 (2).18 (6).29 (2).47.48.50.51.52. }	

★Must be Purchased in Assembly Set

●Recommended not to be purchased alone due to assembly difficulty