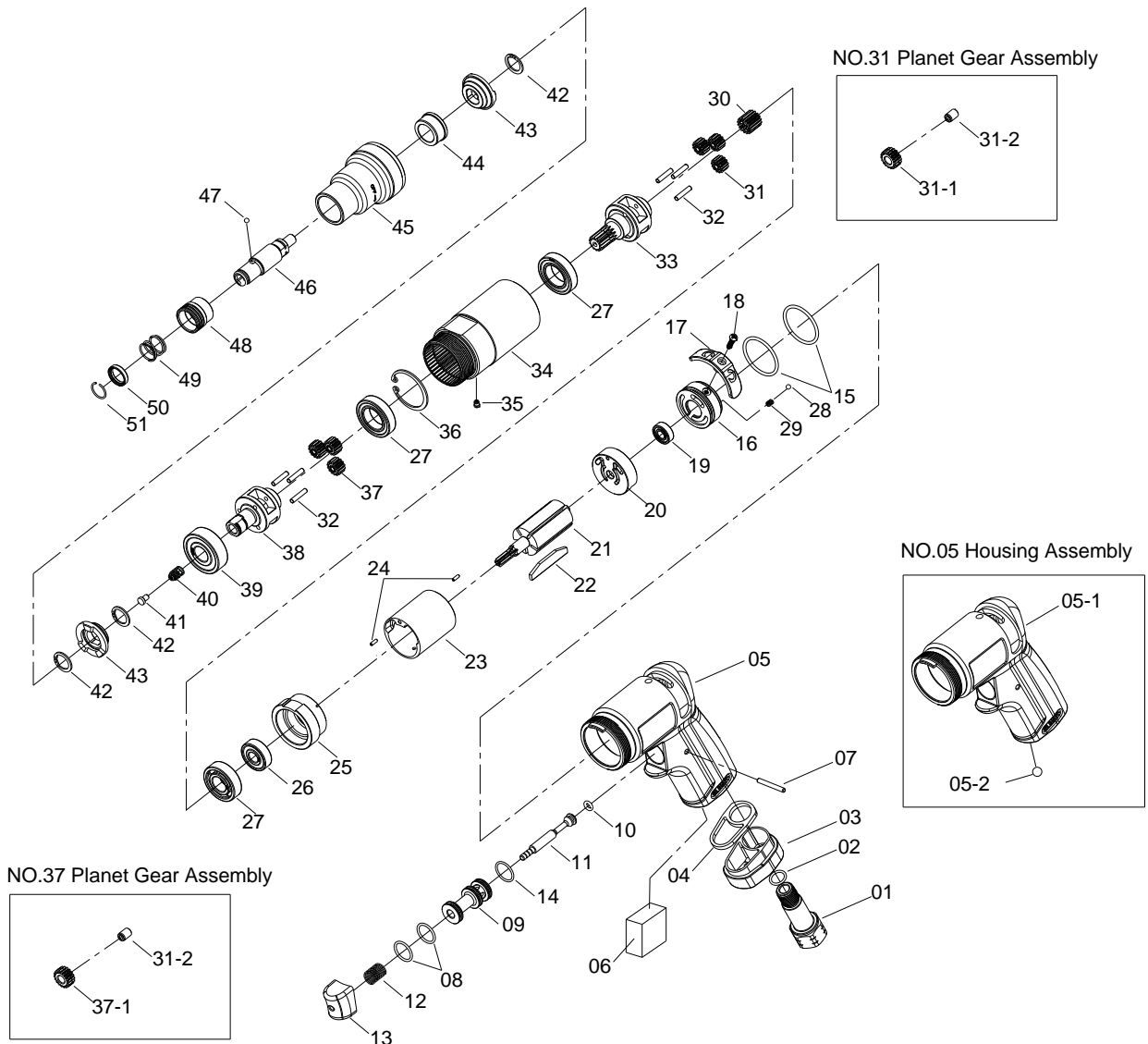


1/4" HEX. SUPER DUTY SCREWDRIVER



3278

INDEX NO.	DESCRIPTION	REQ'D NO.	INDEX NO.	DESCRIPTION	REQ'D NO.
1	Air Inlet	1	28	Steel Ball	1
2	O-Ring	1	29	Spring	1
3	Exhaust Deflector	1	30	Pinion Gear	1
4	Washer	1	★ 31	Planet Gear Assembly { incl.31-1.31-2 (3) }	3
★ 5	Housing Assembly (incl.5-1.5-2)	1	● 31-1	Planet Gear	3
● 5-1	Motor Housing	1	● 31-2	Bushing	6
● 5-2	Steel Ball	1	32	Pin	6
6	Muffler Element	1	33	Carrier	1
7	Pin	1	34	Gear Housing	1
8	O-Ring	2	35	Grease Fitting	1
9	Throttle Valve Seat	1	36	Retainer	1
10	O-Ring	1	★ 37	Planet Gear Assembly { incl.37-1.37-2 (3) }	3
11	Valve Stem	1	● 37-1	Planet Gear	3
12	Spring	1	38	Work Spindle	1
13	Trigger	1	39	Ball Bearing	1
14	O-Ring	1	40	Spring	1
15	O-Ring	2	41	Spindle Guide	1
16	Reverse Valve	1	42	Retainer	3
17	Reverse Valve Knob	1	43	Drive Dog	2
18	Screw	1	44	Bushing	1
19	Ball Bearing	1	45	Hammer Case	1
20	Rear End Plate	1	46	Standard Anvil	1
21	Rotor	1	47	Steel Ball	1
22	Rotor Blade	5	48	Release Sleeve	1
23	Cylinder	1	49	Spring	1
24	Spring Pin	2	50	Washer	1
25	Front End Plate	1	51	Retainer	1
26	Ball Bearing	1	TK	Tune-Up Kit { incl.2.6 .8 (2).10.12.14.15 (2).22 (5).34.41.45.46.50.51 }	
27	Ball Bearing	3			

★ Must be Purchased in Assembly Set

● Recommended not to be purchased alone due to assembly difficult