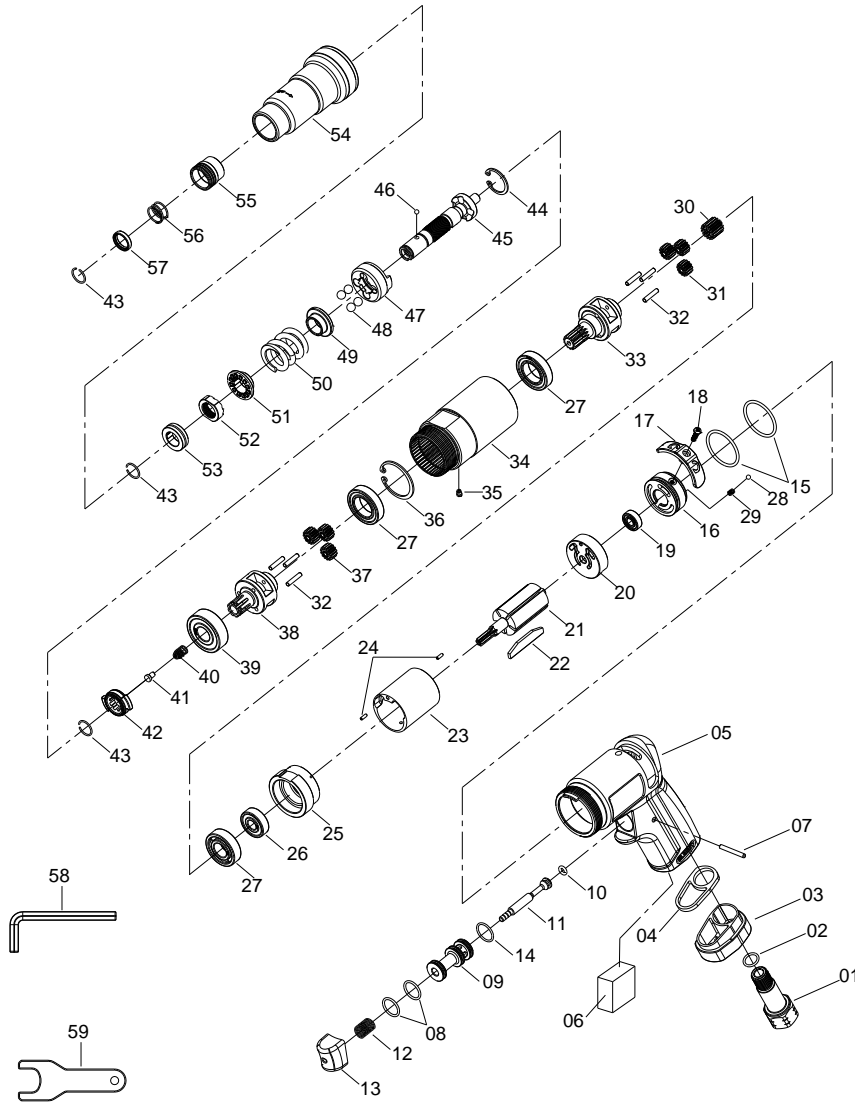
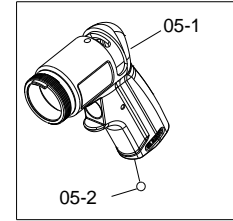


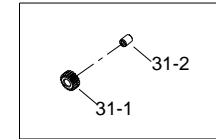
# 1/4" HEX. SUPER DUTY SCREWDRIVER



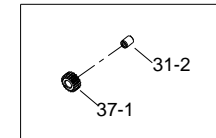
Motor Housing Assembly NO.05



Planet Gear Assembly NO.31



Planet Gear Assembly NO.37



3279

INDEX NO.	DESCRIPTION	REQ'D NO.	INDEX NO.	DESCRIPTION	REQ'D NO.
1	Air Inlet	1	● 31-1	Planet Gear	1
2	O-Ring	1	● 31-2	Bushing	6
3	Exhaust Deflector	1	32	Pin	6
4	Washer	1	33	Carrier	1
★ 5	Motor Housing Assembly	1	34	Gear Housing	1
● 5-1	Motor Housing	1	35	Grease Fitting	1
● 5-2	Steel Ball	1	36	Retainer	1
06	Muffler Element	1	37	Planet Gear Assembly { incl.37-1.31-2 ( 3 ) }	3
07	Pin	1	● 37-1	Planet Gear	3
08	O-Ring	2	38	Work Spindle	1
09	Regulating Valve	1	39	Ball Bearing	1
10	O-Ring	1	40	Spring	1
11	Valve Stem	1	41	Spindle Guide	1
12	Spring	1	42	Drive Dog	1
13	Trigger	1	43	Retainer	3
14	O-Ring	1	44	Retainer	1
15	O-Ring	2	45	Work Spindle	1
16	Reverse Valve	1	46	Steel Ball	1
17	Everse Knob	1	47	Hammer Frame	1
18	Screw	1	48	Steel Ball	4
19	Ball Bearing	1	49	Ring	1
20	Rear End Plate	1	50	Spring	1
21	Rotor	1	51	Washer	1
22	Rotor Blade	5	52	Screw Nut	1
23	Cylinder	1	53	Bushing	1
24	Spring Pin	2	54	Hammer Case	1
25	Front End Plate	1	55	Release Sleeve	1
26	Ball Bearing	1	56	Spring	1
27	Ball Bearing	3	57	Washer	1
28	Steel Ball	1	58	L Shape HEX. Wrench	1
29	Spring	1	59	Wrench	1
30	Pinion Gear	1			
★ 31	Planet Gear Assembly { incl.31-1.31-2 ( 3 ) }	3	TK	Tune-Up Kit { incl.2.6.8 ( 2 ).10.12.14.15 ( 2 ).22 ( 5 ).28.29 40.46.48 ( 4 ).50.56 }	

★ Must be Purchased in Assembly Set

● Recommended not to be purchased alone due to assembly difficulty

20130912R1