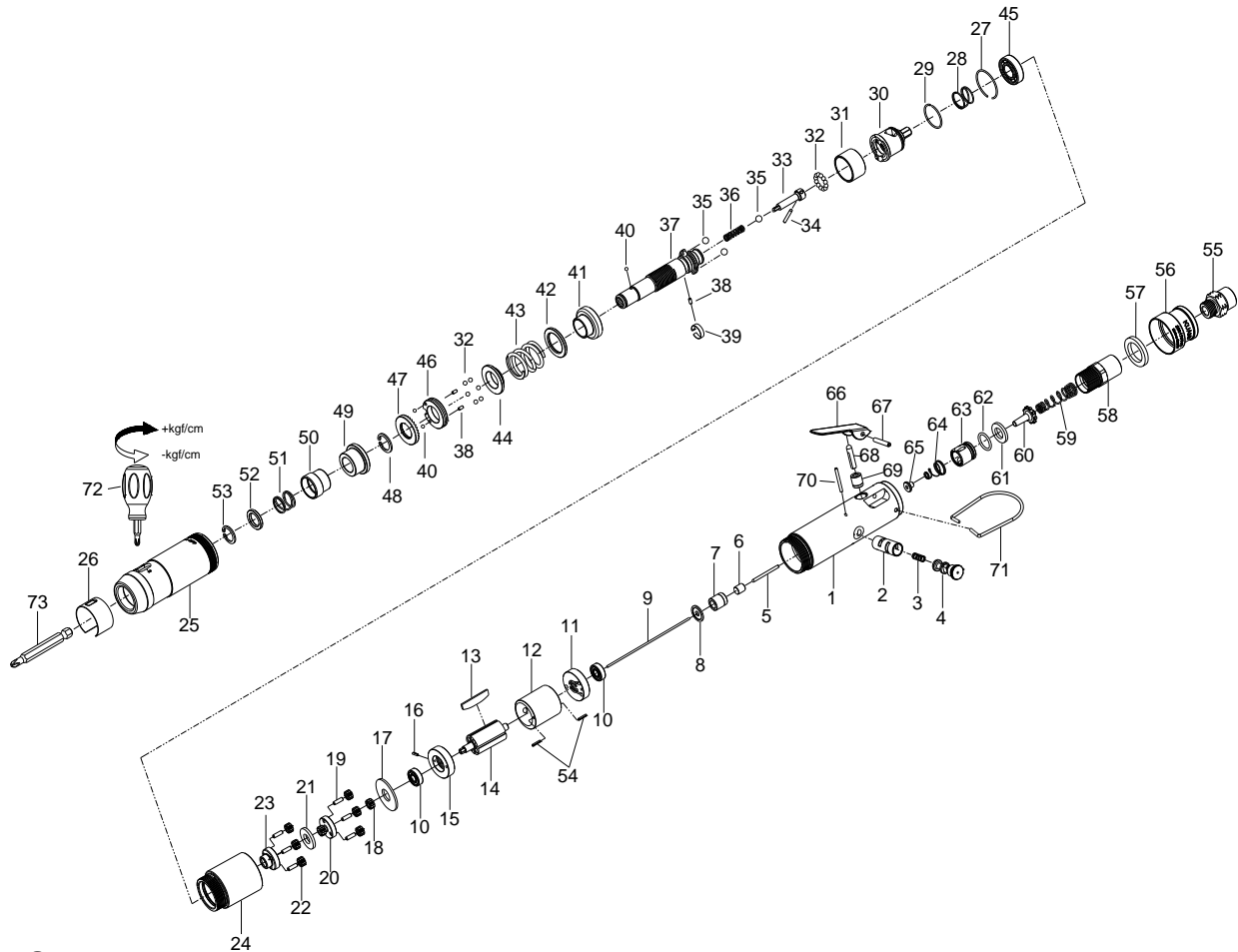


1/4" HEX. SUPER DUTY FULL-AUTO SHUT OFF AIR SCREWDRIVER



33011SLWA

INDEX NO.	DESCRIPTION	REQ'D NO.	INDEX NO.	DESCRIPTION	REQ'D NO.
★ 01	Housing Assembly (incl.4)	1	38	Pin	3
02	Valve Bushing	1	39	Band	1
03	Spring	1	40	Steel Ball	3
● 04	Reverse Valve	1	41	Central Clutch	1
05	Pin	1	42	Washer	1
06	Shut-off Valve	1	43	Spring	1
07	Rear Plate Space	1	44	Spring Collar	1
08	Washer	1	45	Ball Bearing	1
09	Throttle Valve Plunger	1	46	Adjustment Lock Ring	1
10	Ball Bearing	2	47	Adjustment Nut	1
11	Rear End Plate	1	48	Retainer	1
12	Cylinder	1	49	Bushing	1
13	Rotor Blade	4	50	Release Sleeve	1
14	Rotor	1	51	Spring	1
15	Front End Plate	1	52	Washer	1
16	Spring Pin	1	53	Retainer	1
17	Washer	1	54	Pin	2
18	Pinion Gear	1	55	Air Inlet	1
19	Pin	6	56	Exhaust Deflector	1
20	Rear Gear Head	1	57	Muffler Element	1
21	Washer	1	58	Air Inlet	1
22	Planet Gear	6	59	Spring	1
23	Front Gear Head	1	60	Throttle Valve	1
24	Gear Housing	1	61	Washer	1
25	Clutch Housing	1	62	O-Ring	1
26	Rubber Ring	1	63	Bushing	1
27	Retainer	1	64	Spring	1
28	Spring	1	65	Handle Bushing	1
29	Retainer	1	66	Trigger	1
30	Rear Clutch	1	67	Pin	1
31	Ball Holder	1	68	Valve Stem	1
32	Steel Ball	18	69	Bushing	1
33	Pilot Pin	1	70	Pin	1
34	Pin	1	71	Hanger	1
35	Steel Ball	3	72	Screwdriver	1
36	Spring	1	73	Bit (Option)	
37	Pin	1	TK	Tune-Up Kit { incl.3.13 (4).28.32 (18).35 (3).36.40 (3).43.51.57.59.62.64 }	

★ Must be Purchased in Assembly Set

● Recommended not to be purchased alone due to assembly difficulty