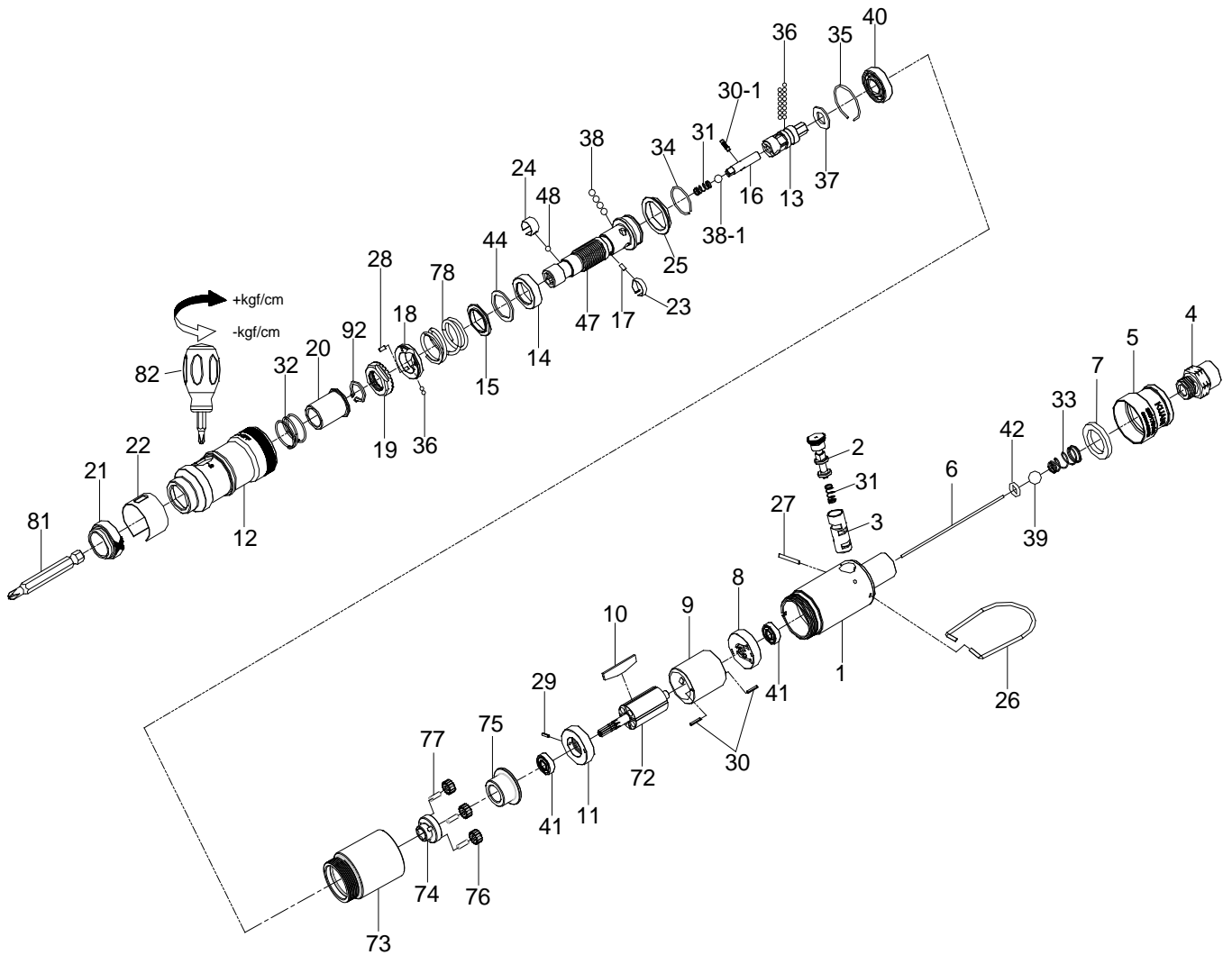


1/4" Hex. SUPER DUTY FULL-AUTO SHUT OFF AIR SCREWDRIVER



33023STUA

INDEX NO.	DESCRIPTION	REQ'D NO.	INDEX NO.	DESCRIPTION	REQ'D NO.
★ 1	Housing Assembly (incl.3)	1	30	Spring Pin	2
2	Reverse Valve	1	30-1	Pin	1
● 3	Reverse Valve Bushing	1	31	Spring	2
4	Air Inlet	1	32	Spring	1
5	Exhaust Deflector	1	33	Spring	1
6	Throttle Valve Plunger	1	34	Retainer	1
7	Muffler Element	1	35	Retainer	1
8	Rear End Plate	1	36	Steel Ball	17
9	Cylinder	1	37	Washer	1
10	Rotor Blade	4	38	Steel Ball	4
11	Front End Plate	1	38-1	Steel Ball	1
12	Hammer Case	1	39	Steel Ball	1
13	Cam Spindle	1	40	Ball Bearing	1
14	Cam Ring	1	41	Ball Bearing	2
15	Spring Collar	1	42	O-Ring	1
16	Driving Shaft	1	44	Gasket	1
17	Pin	1	47	Standard Anvil	1
18	Adjustment Lock Ring	1	48	Steel Ball	1
19	Adjustment Nut	1	72	Rotor	1
20	Bushing	1	73	Gear Housing	1
21	Retainer	1	74	Work Spider	1
22	Adjustment Cover	1	75	Washer	1
23	Band	1	76	Planet Gear	3
24	Band	1	77	Pin	3
25	Ball Holder	1	78	Spring	1
26	Hanger	1	81	Bit (Option)	
27	Pin	1	82	Screwdriver	1
28	Pin	1	92	Retainer	1
29	Spring Pin	1	TK	Tune-Up Kit { incl.7.10 (4).31 (2).32.33.36 (17).38 (4).38-1.39.42.44.48.78 }	

★ Must be Purchased in Assembly Set

● Recommended not to be purchased alone due to assembly difficulty