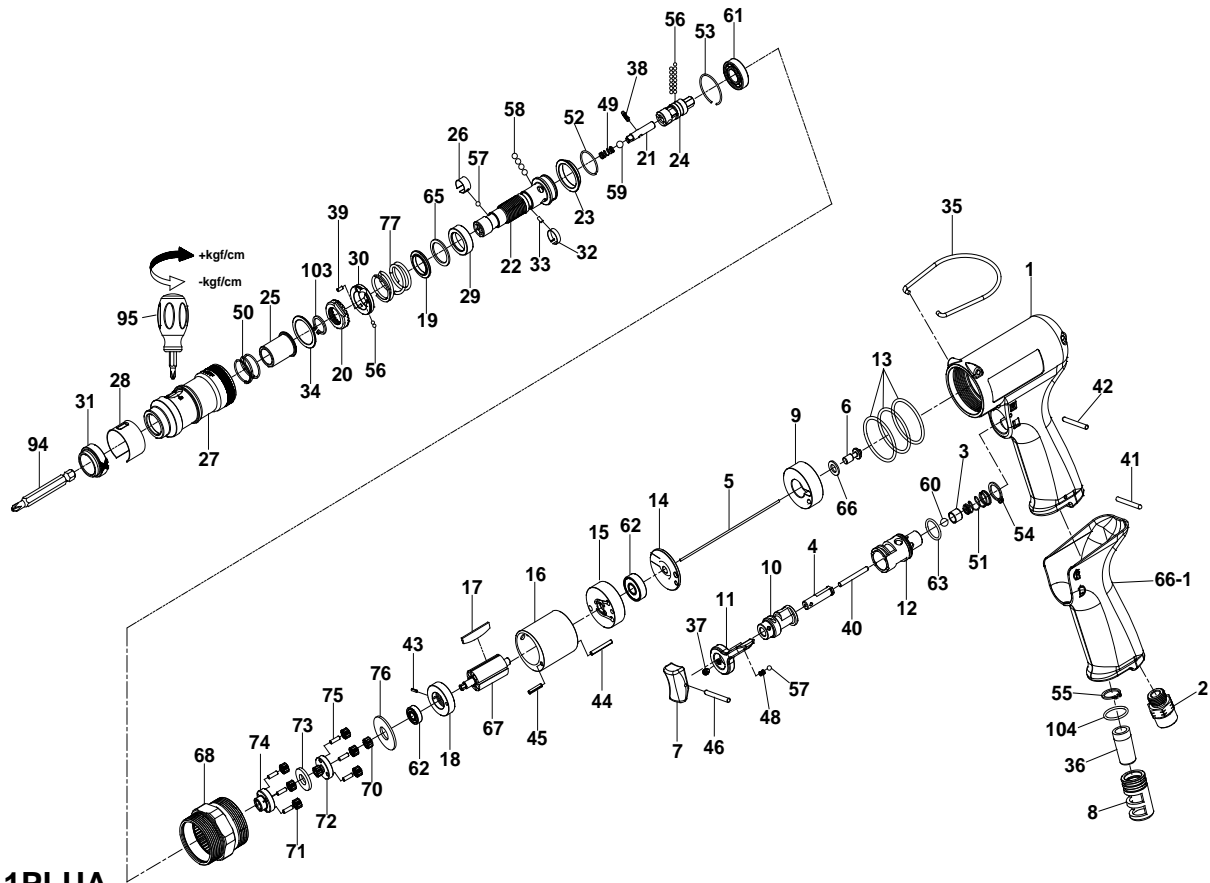


1/4" HEX. SUPER DUTY FULL-AUTO SHUT OFF AIR SCREWDRIVER



33111PLUA

INDEX NO.	DESCRIPTION	REQ'D NO.	INDEX NO.	DESCRIPTION	REQ'D NO.
1	Housing	1	41	Pin	1
2	Air Inlet	1	42	Pin	1
3	Throttle Valve	1	43	Spring Pin	1
4	Trigger Pin	1	44	Spring Pin	1
5	Throttle Valve Plunger	1	45	Spring Pin	1
6	Shut-off Valve	1	46	Spring Pin	1
7	Trigger	1	48	Spring	1
8	Exhaust Deflector	1	49	Spring	1
9	Handle Bushing	1	50	Spring	1
10	Reverse Valve	1	51	Spring	1
11	Reverse Knob	1	52	Retainer	1
12	Reverse Valve Bushing	1	53	Retainer	1
13	O-Ring	3	54	Retainer	1
14	Rear Plate Space	1	55	Retainer	1
15	Rear End Plate	1	56	Steel Ball	17
16	Cylinder	1	57	Steel Ball	2
17	Rotor Blade	4	58	Steel Ball	4
18	Front End Plate	1	59	Steel Ball	1
19	Spring Collar	1	60	Steel Ball	1
20	Adjustment Nut	1	61	Ball Bearing	1
21	Driving Shaft	1	62	Ball Bearing	2
22	Standard Anvil	1	63	O-Ring	1
23	Ball Holder	1	65	Gasket	1
24	Cam Spindle	1	66	Washer	1
25	Bushing	1	66-1	Rubber Grip	1
26	Band	1	67	Rotor	1
27	Hammer Case	1	68	Gear Housing	1
28	Adjustment Cover	1	70	Inner Gear	1
29	Cam Ring	1	71	Planet Gear	6
30	Adjustment Lock Ring	1	72	Work Spinder	1
31	Retainer	1	73	Washer	1
32	Band	1	74	Work Spinder	1
33	Pin	1	75	Pin	6
34	Washer	1	76	Washer	1
35	Hanger	1	77	Spring	1
36	Muffler Element	1	94	Bit (Option)	1
37	Screw	1	95	Screwdriver	1
38	Pin	1	103	Retainer	1
39	Pin	1	104	O-Ring	1
40	Pin	1	TK	Tune-Up Kit { incl.13 (3),17 (4),36,48,49,50,51,56 (17),57 (2),58 (4),59,60,63,65,77,104 }	

★ Must be Purchased in Assembly Set

● Recommended not to be purchased alone due to assembly difficulty