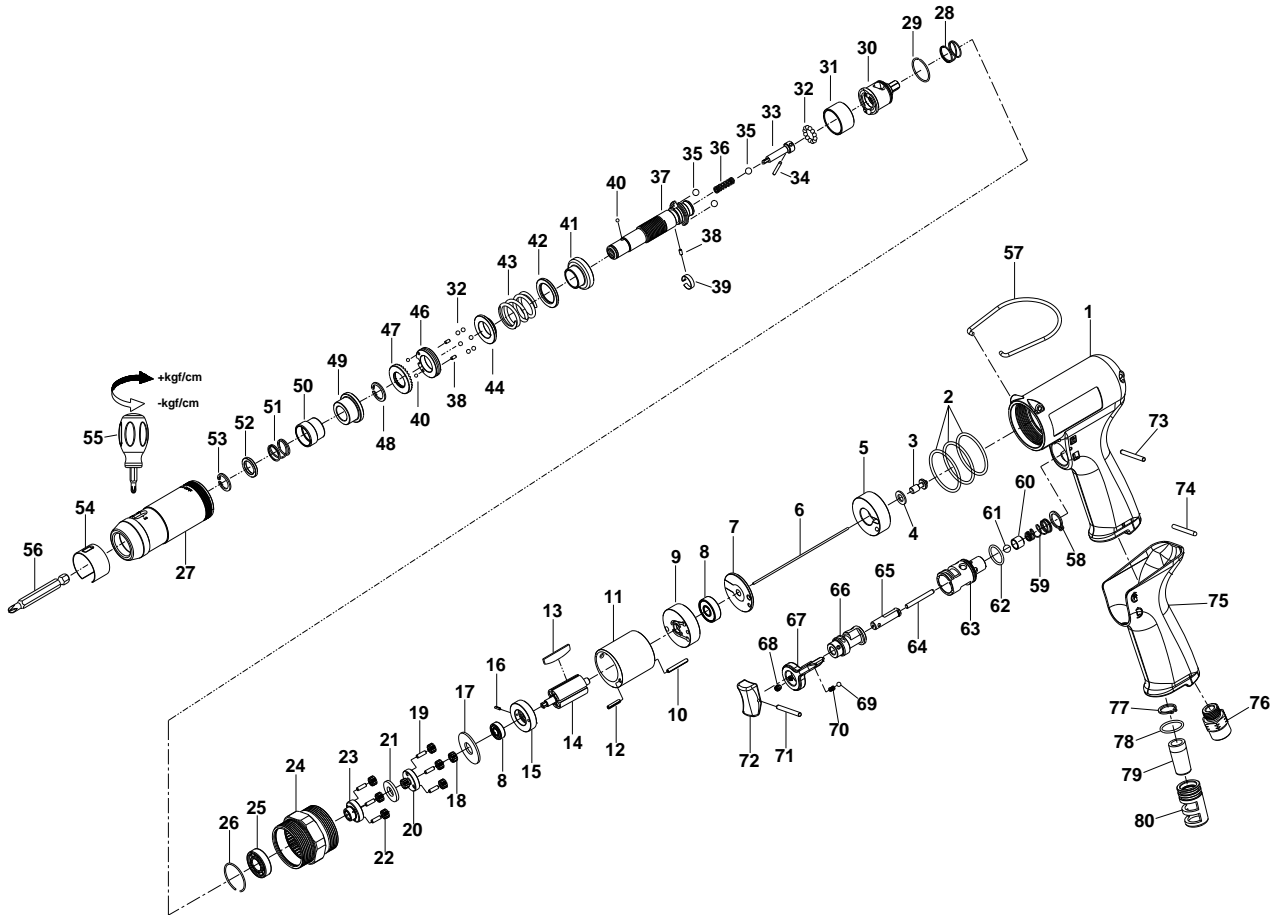


1/4" HEX. SUPER DUTY FULL-AUTO SHUT OFF AIR SCREWDRIVER



33111PLWA

INDEX NO.	DESCRIPTION	REQ'D NO.	INDEX NO.	DESCRIPTION	REQ'D NO.
01	Motor Housing	1	41	Central Clutch	1
02	O-Ring	3	42	Washer	1
03	Shut-off Valve	1	43	Torque Setting Spring	1
04	Washer	1	44	Spring Collar	1
05	Handle Bushing	1	46	Adjustment Lock Ring	1
06	Throttle Valve Plunger	1	47	Adjustment Nut	1
07	Rear Plate Space	1	48	Retainer	1
08	Ball Bearing	2	49	Bushing	1
09	Rear End Plate	1	50	Release Sleeve	1
10	Spring Pin	1	51	Spring	1
11	Cylinder	1	52	Washer	1
12	Spring Pin	1	53	Retainer	1
13	Rotor Blade	4	54	Rubber Ring	1
14	Rotor	1	55	Screwdriver	1
15	Front End Plate	1	56	Bit (Option)	1
16	Spring Pin	1	57	Hanger	1
17	Washer	1	58	Retainer	1
18	Pinion Gear	1	59	Throttle Valve Spring	1
19	Pin	6	60	Throttle Valve	1
20	Rear Gear Head	1	61	Steel Ball	1
21	Washer	1	62	O-Ring	1
22	Planet Gear	6	63	Bushing	1
23	Front Gear Head	1	64	Pin	1
24	Gear Housing	1	65	Trigger Pin	1
25	Ball Bearing	1	66	Reverse Valve	1
26	Retainer	1	67	Everse Knob	1
27	Clutch Housing	1	68	Screw	1
28	Spring	1	69	Steel Ball	1
29	Retainer	1	70	Spring	1
30	Rear Clutch	1	71	Spring Pin	1
31	Ball Holder	1	72	Trigger	1
32	Steel Ball	18	73	Pin	1
33	Pilot Pin	1	74	Pin	1
34	Pin	1	75	Rubber Grip	1
35	Steel Ball	3	76	Air Inlet	1
36	Spring	1	77	Retainer	1
37	Standard Anvil	1	78	O-Ring	1
38	Pin	3	79	Muffler	1
39	Band	1	80	Exhaust Deflector	1
40	Steel Ball	3	TK	Tune-Up Kit { incl. 2 (3),13 (4),28,32 (18),35 (3),36,40 (3),43,51,59,61,62,69,70,78 }	

★ Must be Purchased in Assembly Set

● Recommended not to be purchased alone due to assembly difficulty