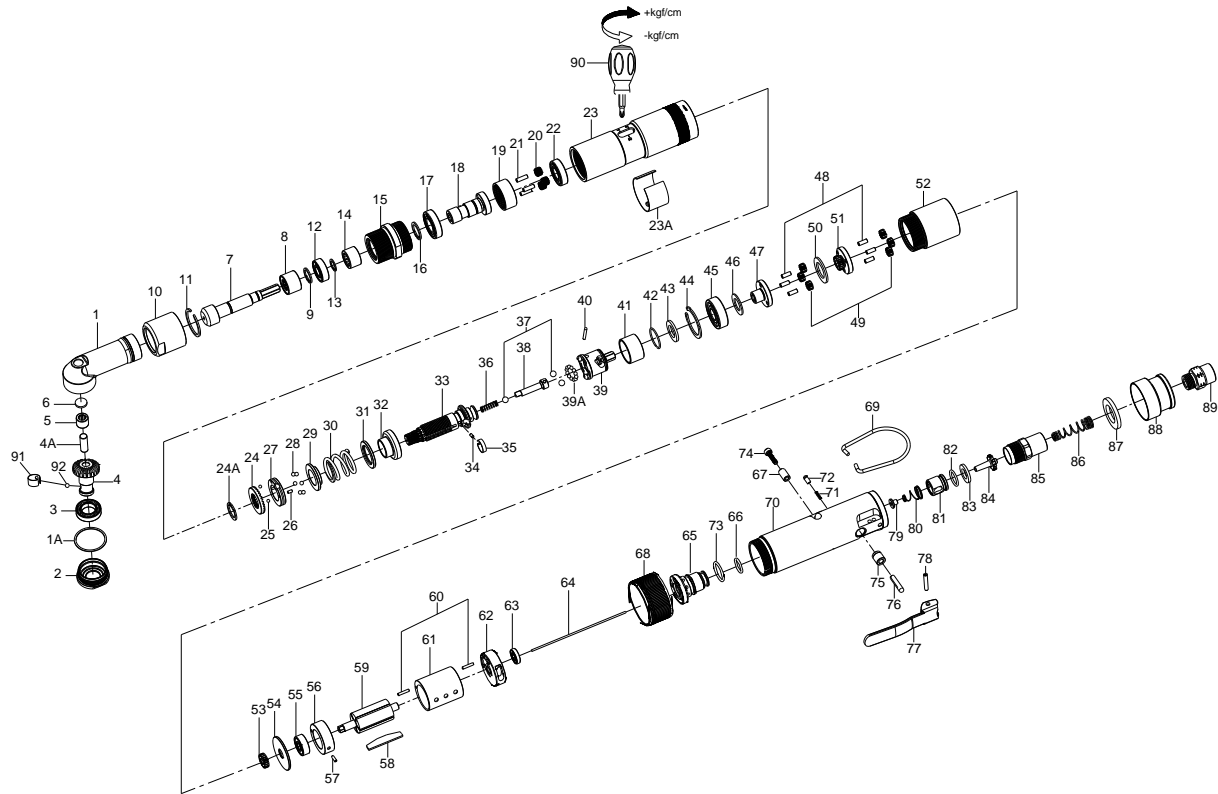


# 1/4" HEX. SUPER DUTY FULL-AUTO SHUT OFF AIR SCREWDRIVER



## 34003CGWA

INDEX NO.	DESCRIPTION	REQ'D NO.	INDEX NO.	DESCRIPTION	REQ'D NO.
1	Housing	1	45	Ball Bearing	1
1A	Washer	1	46	Washer	1
2	Housing Cover	1	47	Front Gear Head	1
3	Ball Bearing	1	48	Pin	6
4	Standard Anvil	1	49	Planet Gear	6
4A	Pin	1	50	Washer	1
5	Bearing	1	51	Rear Gear Head	1
6	Housing Plate	1	52	Gear Housing	1
7	Driving Shaft Gear	1	53	Pinion Gear	1
8	Bearing	1	54	Washer	1
9	Retainer	1	55	Ball Bearing	1
10	Coupling Nut	1	56	Front End Plate	1
11	Retainer	1	57	Pin	1
12	Ball Bearing	1	58	Rotor Blade	5
13	Retainer	1	59	Rotor	1
14	Bearing	1	60	Pin	2
15	Connecting Screw	1	61	Cylinder	1
16	Retainer	1	62	Rear End Plate	1
17	Ball Bearing	1	63	Ball Bearing	1
18	Work Spindle	1	64	Throttle Valve Plunger	1
19	Ring Gear	1	65	Reverse Valve	1
20	Planet Gear	3	66	O-Ring	1
21	Pin	3	67	Bushing	1
22	Ball Bearing	1	68	Reverse Knob	1
23	Hammer Case	1	69	Hanger	1
23A	Rubber Ring	1	70	Motor Case	1
24	Adjustment Nut	1	71	Spring	1
24A	Retainer	1	72	Pin	1
25	Steel Ball	2	73	O-Ring	1
26	Pin	1	74	Screw	1
27	Adjustment Lock Ring	1	75	Bushing	1
28	Steel Ball	6	76	Valve Stem	1
29	Spring Collar	1	77	Trigger	1
30	Torque Setting Spring	1	78	Spring Pin	1
31	Spacer	1	79	Handle Bushing	1
32	Central Clutch	1	80	Spring	1
33	Cam Shaft	1	81	Bushing	1
34	Pin	1	82	O-Ring	1
35	Band	1	83	Washer	1
36	Spring	1	84	Throttle Valve	1
37	Steel Ball	3	85	Air Inlet	1
38	Pilot Pin	1	86	Spring	1
39	Rear Clutch	1	87	Muffler Element	1
39A	Steel Ball	12	88	Exhaust Deflector	1
40	Pin	1	89	Air Inlet	1
41	Ball Holder	1	90	Screwdriver	1
42	Retainer	1	91	Ring	1
43	Washer	1	92	Steel Ball	1
44	Retainer	1	TK	Tune-Up Kit (incl. 25 (2), 28 (6), 30, 36, 37 (3), 39A (12), 58 (5), 66, 71, 73, 80, 82, 86, 87, 92)	

★ Must be Purchased in Assembly Set

● Recommended not to be purchased alone due to assembly difficulty

20160621R1