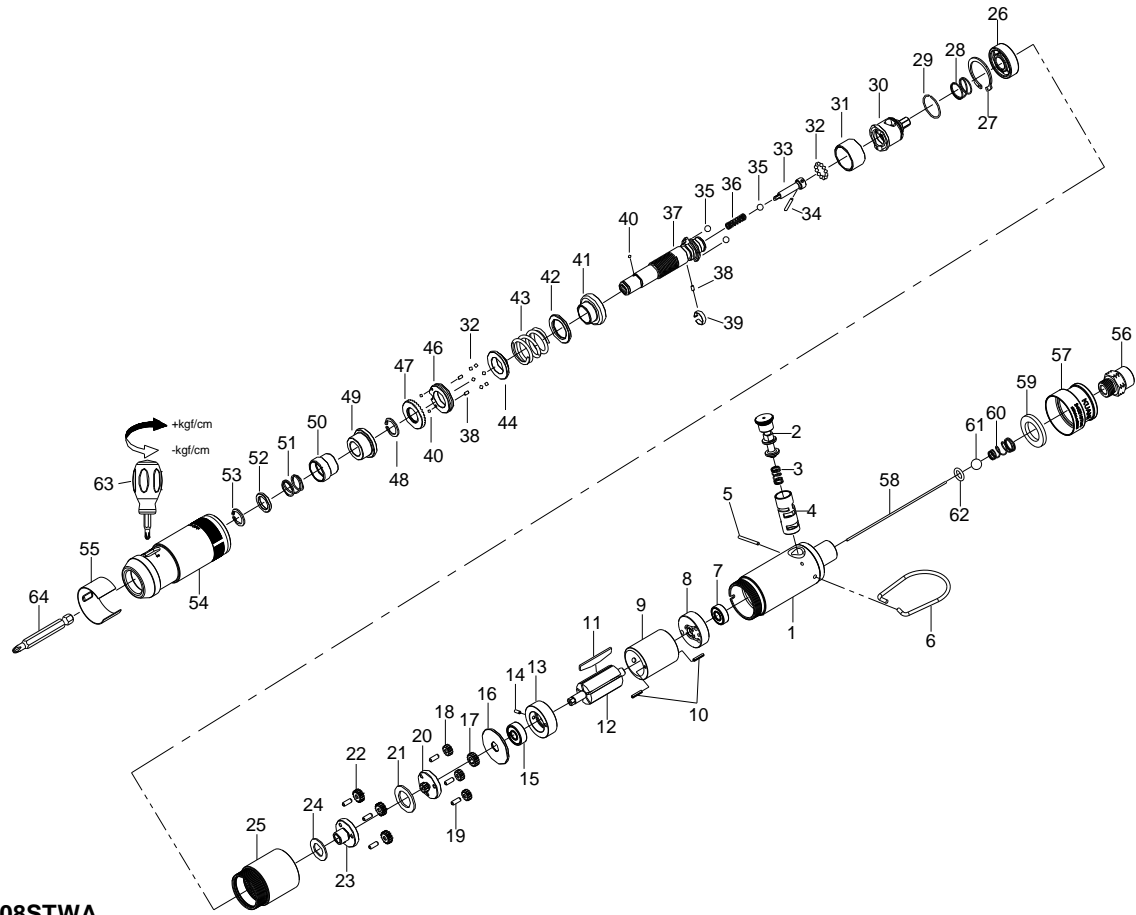


1/4" HEX. SUPER DUTY FULL-AUTO SHUT OFF AIR SCREWDRIVER



34008STWA

INDEX NO.	DESCRIPTION	REQ'D NO.	INDEX NO.	DESCRIPTION	REQ'D NO.
★ 1	Housing Assembly (incl. 4)	1	34	Pin	1
2	Reverse Valve	1	35	Steel Ball	3
3	Spring	1	36	Spring	1
● 4	Reverse Valve Bushing	1	37	Standard Anvil	1
5	Pin	1	38	Pin	3
6	Hanger	1	39	Band	1
7	Bearing	1	40	Steel Ball	3
8	Rear End Plate	1	41	Cam Ring	1
9	Cylinder	1	42	Washer	1
10	Pin	2	43	Spring	1
11	Rotor Blade	5	44	Spring Holder	1
12	Rotor	1	46	Adjustment Nut	1
13	Front End Plate	1	47	Adjustment Lock Ring	1
14	Pin	1	48	Retainer	1
15	Bearing	1	49	Bushing	1
16	Spacer	1	50	Bit Sleeve	1
17	Middle Gear	1	51	Spring	1
18	Planet Gear	3	52	Washer	1
19	Pin	6	53	Retainer	1
20	First Gear Cage	1	54	Hammer Case	1
21	Gear Cage Spacer	1	55	Adjustment Cover	1
22	Planet Gear	3	56	Air Inlet	1
23	Second Gear Cage	1	57	Exhaust Deflector	1
24	Washer	1	58	Throttle Valve Plunger	1
25	Gear Housing	1	59	Muffler Element	1
26	Bearing	1	60	Spring	1
27	Retainer	1	61	Steel Ball	1
28	Spring	1	62	O-Ring	1
29	Snap Ring	1	63	Screwdriver	1
30	Cam Spindle	1	64	Bit (Option)	1
31	Ball Holder	1	TK	Tune-Up Kit { incl. 3.7 .11 (5) .15.26.28.30.32 (18) .33. 34.35 (3) .36.38.39.40 (3) .43.47.51.56.57 .58.59.60.61.62 }	
32	Steel Ball	18			
33	Driving Shaft	1			

★ Must be Purchased in Assembly Set

● Recommended not to be purchased alone due to assembly difficulty