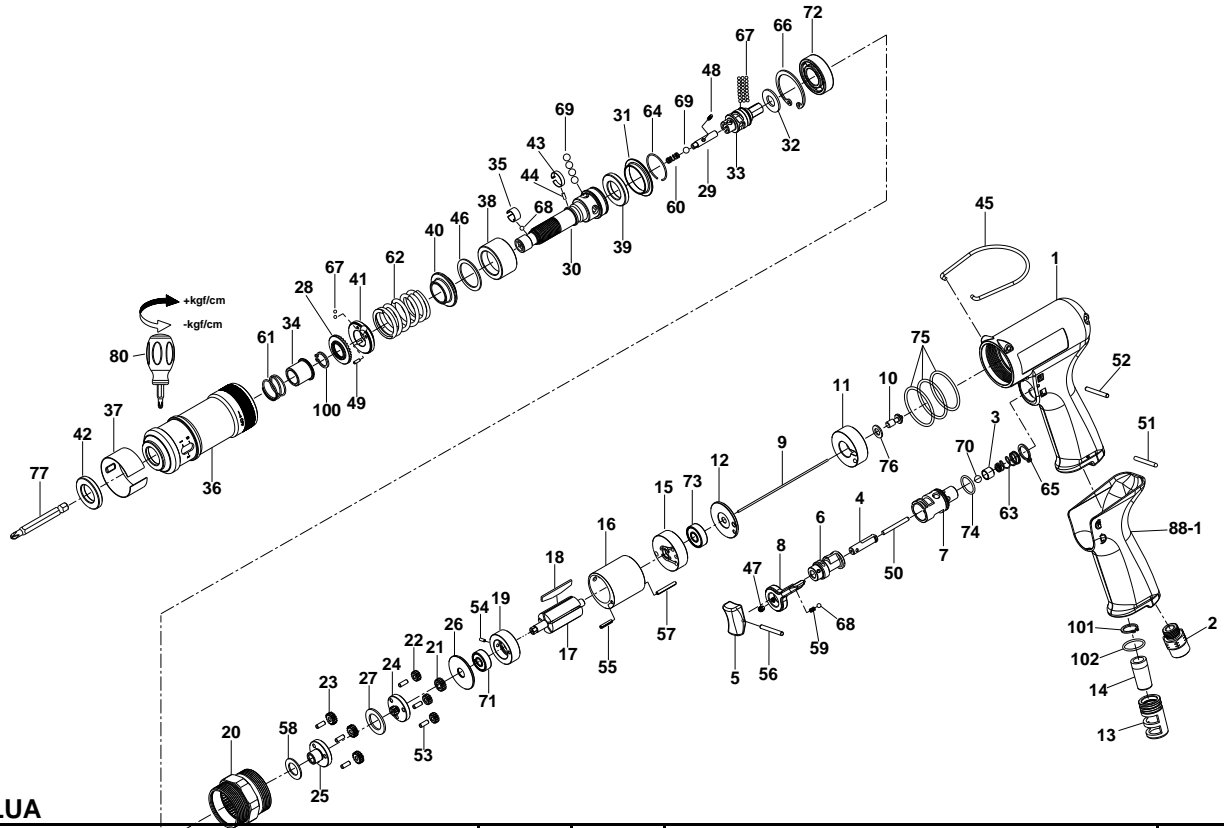


1/4" HEX. SUPER DUTY FULL-AUTO SHUT OFF AIR SCREWDRIVER



34108PLUA

INDEX NO.	DESCRIPTION	REQ'D NO.	INDEX NO.	DESCRIPTION	REQ'D NO.
1	Housing	1	43	Band	1
2	Air Inlet	1	44	Pin	1
3	Throttle Valve	1	45	Hanger	1
4	Trigger Pin	1	46	Gasket	1
5	Trigger	1	47	Screw	1
6	Reverse Valve	1	48	Pin	1
7	Reverse Valve Bushing	1	49	Pin	1
8	Reverse Knob	1	50	Pin	1
9	Throttle Valve Plunger	1	51	Pin	1
10	Shut-off Valve	1	52	Pin	1
11	Handle Bushing	1	53	Pin	6
12	Rear Plate Space	1	54	Spring Pin	1
13	Exhaust Deflector	1	55	Spring Pin	1
14	Muffler Element	1	56	Spring Pin	1
15	Rear End Plate	1	57	Spring Pin	1
16	Cylinder	1	58	Washer	1
17	Rotor	1	59	Spring	1
18	Rotor Blade	5	60	Spring	1
19	Front End Plate	1	61	Spring	1
20	Gear Housing	1	62	Spring	1
21	Inner Gear	1	63	Spring	1
22	Planet Gear	3	64	Retainer	1
23	Planet Gear	3	65	Retainer	1
24	Work Spinder	1	66	Retainer	1
25	Work Spinder	1	67	Steel Ball	21
26	Washer	1	68	Steel Ball	2
27	Washer	1	69	Steel Ball	5
28	Adjustment Lock Ring	1	70	Steel Ball	1
29	Driving Shaft	1	71	Ball Bearing	1
30	Standard Anvil	1	72	Ball Bearing	1
31	Ball Holder	1	73	Ball Bearing	1
32	Washer	1	74	O-Ring	1
33	Cam Spindle	1	75	O-Ring	3
34	Bushing	1	76	Washer	1
35	Band	1	77	Bit (Option)	1
36	Hammer Case	1	80	Screwdriver	1
37	Adjustment Cover	1	88-1	Rubber Grip	1
38	Cam Ring	1	100	Retainer	1
39	Washer	1	101	Retainer	1
40	Spring Collar	1	102	O-Ring	1
41	Adjustment Cover	1			
42	Retainer	1	TK	Tune-Up Kit { incl. 18 (5) .59.60.61.62.63.68.69.74.75 (3) .102 }	

★ Must be Purchased in Assembly Set

- Recommended not to be purchased alone due to assembly difficulty