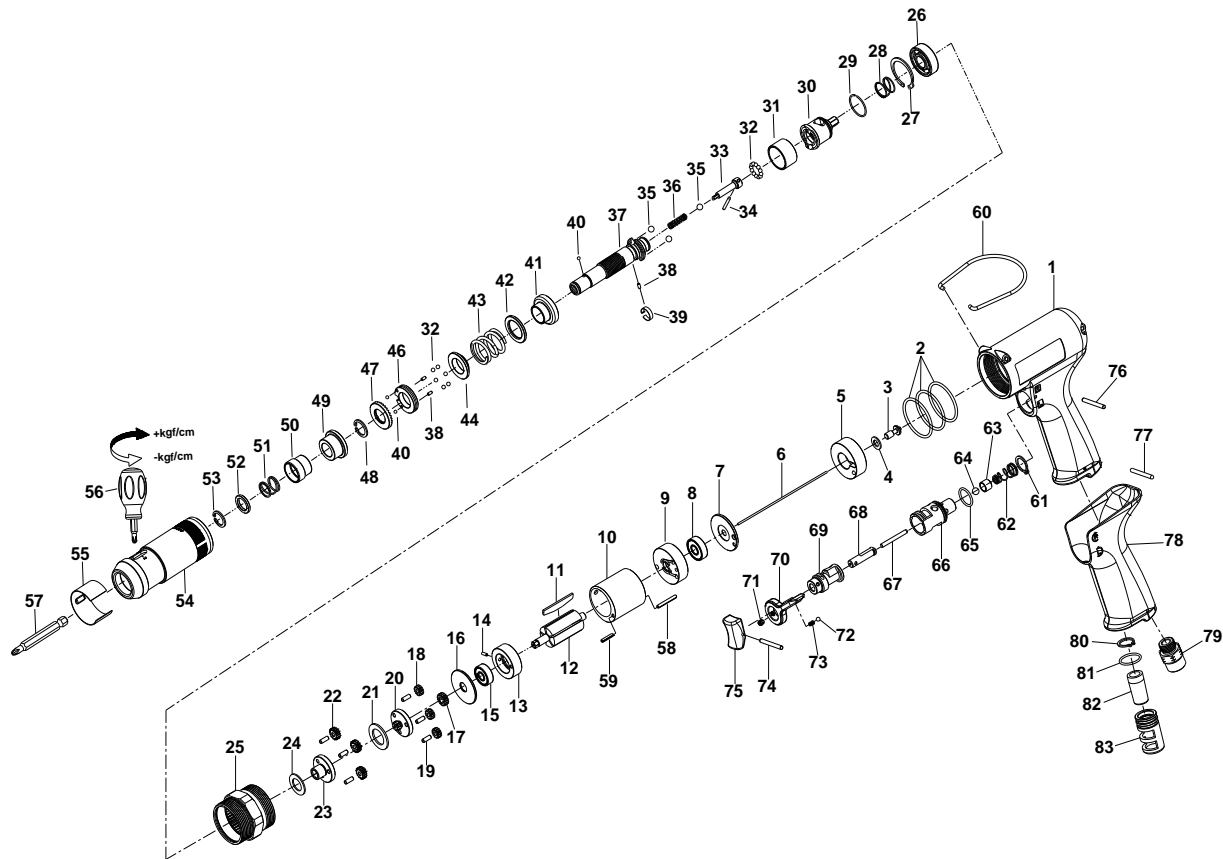


1/4" HEX. SUPER DUTY FULL-AUTO SHUT OFF AIR SCREWDRIVER



34108PLWA

INDEX NO.	DESCRIPTION	REQ'D NO.	INDEX NO.	DESCRIPTION	REQ'D NO.
01	Motor Housing	1	43	Torque Setting Spring	1
02	O-Ring	3	44	Spring Collar	1
03	Shut-off Valve	1	46	Adjustment Lock Ring	1
04	Washer	1	47	Adjustment Nut	1
05	Handle Bushing	1	48	Retainer	1
06	Throttle Valve Plunger	1	49	Bushing	1
07	Rear Plate Space	1	50	Release Sleeve	1
08	Ball Bearing	1	51	Spring	1
09	Rear End Plate	1	52	Washer	1
10	Cylinder	1	53	Retainer	1
11	Rotor Blade	5	54	Clutch Housing	1
12	Rotor	1	55	Rubber Ring	1
13	Front End Plate	1	56	Screwdriver	1
14	Spring Pin	1	57	Bit (Option)	1
15	Ball Bearing	1	58	Spring Pin	1
16	Washer	1	59	Spring Pin	1
17	Pinion Gear	1	60	Hanger	1
18	Planet Gear	3	61	Retainer	1
19	Pin	6	62	Throttle Valve Spring	1
20	Rear Gear Head	1	63	Throttle Valve	1
21	Washer	1	64	Steel Ball	1
22	Planet Gear	3	65	O-Ring	1
23	Front Gear Head	1	66	Bushing	1
24	Washer	1	67	Pin	1
25	Gear Housing	1	68	Trigger Pin	1
26	Ball Bearing	1	69	Reverse Valve	1
27	Retainer	1	70	Everse Knob	1
28	Spring	1	71	Screw	1
29	Retainer	1	72	Steel Ball	1
30	Rear Clutch	1	73	Spring	1
31	Ball Holder	1	74	Spring Pin	1
32	Steel Ball	18	75	Trigger	1
33	Pilot Pin	1	76	Pin	1
34	Pin	1	77	Pin	1
35	Steel Ball	3	78	Rubber Grip	1
36	Spring	1	79	Air Inlet	1
37	Standard Anvil	1	80	Retainer	1
38	Pin	3	81	O-Ring	1
39	Band	1	82	Muffler	1
40	Steel Ball	3	83	Exhaust Deflector	1
41	Central Clutch	1			
42	Washer	1	TK	Tune-Up Kit { incl. 2 (3).11 (5).28.32 (18).35 (3).36.40 (3).43.51.62.64.65.72.73.81 }	

★ Must be Purchased in Assembly Set

● Recommended not to be purchased alone due to assembly difficulty