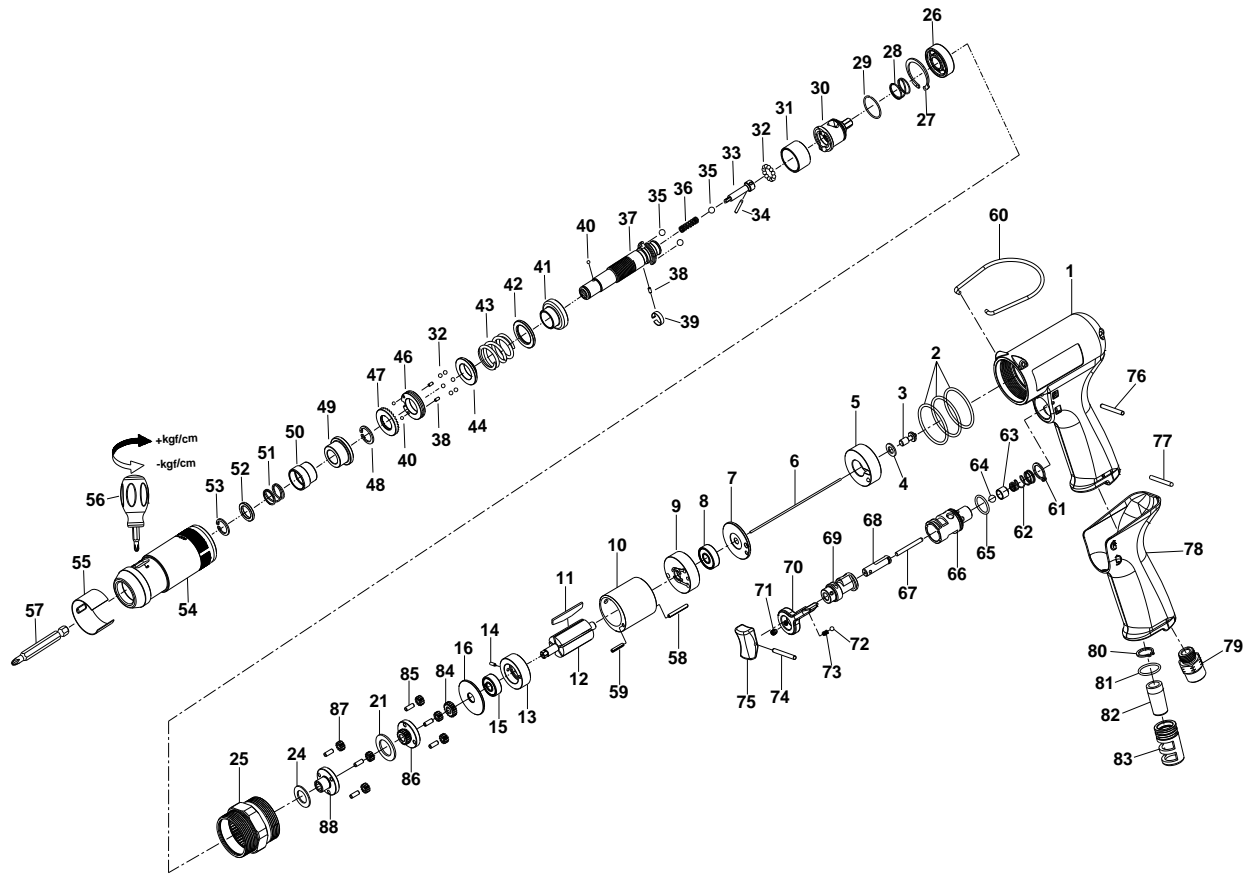


1/4" HEX. SUPER DUTY FULL-AUTO SHUT OFF AIR SCREWDRIVER



34115PLWA

INDEX NO.	DESCRIPTION	REQ'D NO.	INDEX NO.	DESCRIPTION	REQ'D NO.
01	Housing	1	49	Bushing	1
02	O-Ring	3	50	Release Sleeve	1
03	Shut-off Valve	1	51	Spring	1
04	Washer	1	52	Washer	1
05	Handle Bushing	1	53	Retainer	1
06	Throttle Valve Plunger	1	54	Clutch Housing	1
07	Rear Plate Space	1	55	Rubber Ring	1
08	Ball Bearing	1	56	Screwdriver	1
09	Rear End Plate	1	57	Bit (Option)	
10	Cylinder	1	58	Spring Pin	1
11	Rotor Blade	5	59	Spring Pin	1
12	Rotor	1	60	Hanger	1
13	Front End Plate	1	61	Retainer	1
14	Spring Pin	1	62	Spring	1
15	Ball Bearing	1	63	Throttle Valve	1
16	Washer	1	64	Steel Ball	1
21	Washer	1	65	O-Ring	1
24	Washer	1	66	Bushing	1
25	Gear Housing	1	67	Pin	1
26	Ball Bearing	1	68	Trigger Pin	1
27	Retainer	1	69	Reverse Valve	1
28	Spring	1	70	Reverse Knob	1
29	Retainer	1	71	Screw	1
30	Rear Clutch	1	72	Steel Ball	1
31	Ball Holder	1	73	Spring	1
32	Steel Ball	18	74	Spring Pin	1
33	Pilot Pin	1	75	Trigger	1
34	Pin	1	76	Pin	1
35	Steel Ball	3	77	Pin	1
36	Spring	1	78	Rubber Grip	1
37	Standard Anvil	1	79	Air Inlet	1
38	Pin	3	80	Retainer	1
39	Band	1	81	O-Ring	1
40	Steel Ball	3	82	Muffler	1
41	Central Clutch	1	83	Exhaust Deflector	1
42	Washer	1	84	Pinion Gear	1
43	Spring	1	85	Pin	6
44	Spring Collar	1	86	Rear Gear Head	1
46	Adjustment Lock Ring	1	87	Planet Gear	6
47	Adjustment Nut	1	88	Front Gear Head	1
48	Retainer	1	TK	Tune-Up Kit { incl.2 (3),11 (5),28,32 (18),35 (3),36,40 (3),43,51,62,64,65,72,73,81 }	

★ Must be Purchased in Assembly Set

● Recommended not to be purchased alone due to assembly difficulty

20140220R1