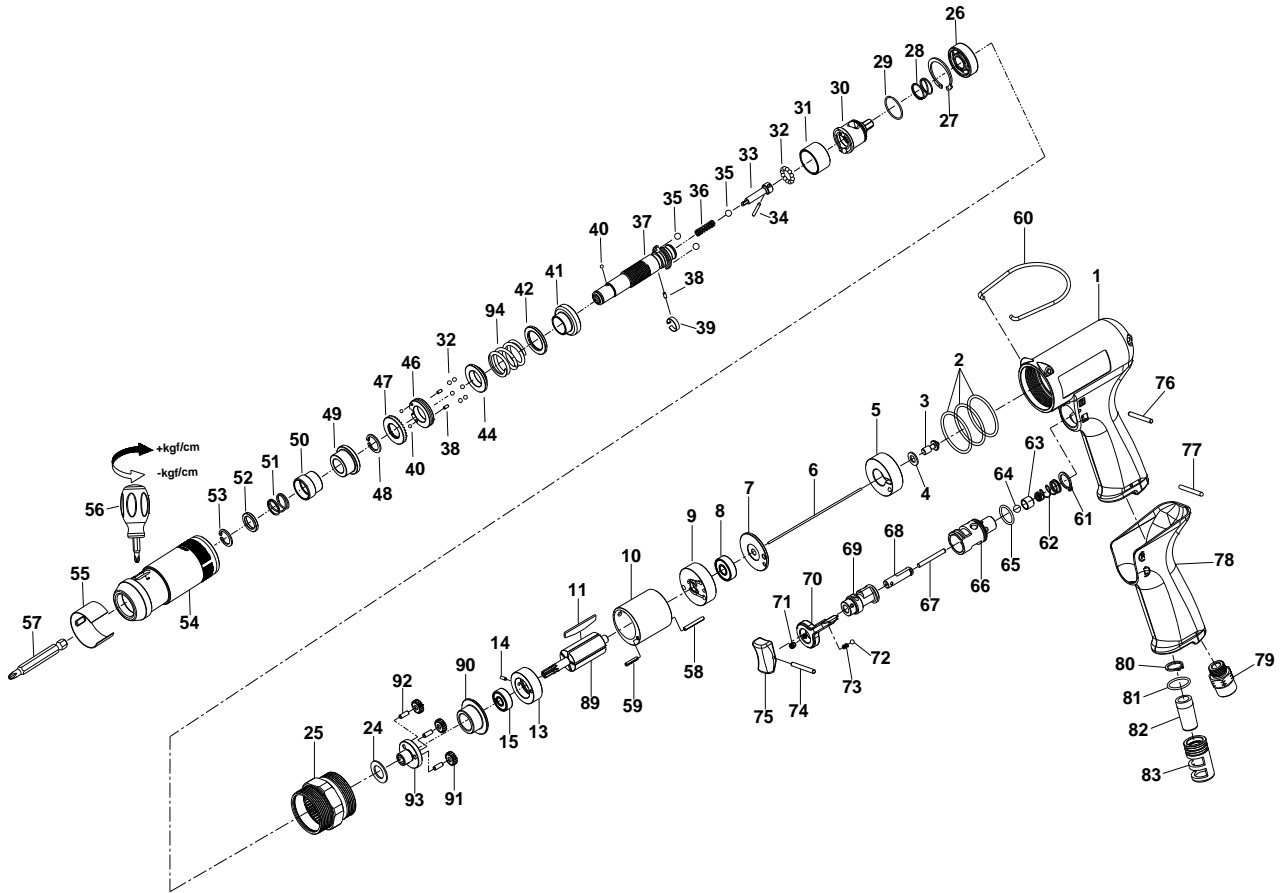


# 1/4" HEX. SUPER DUTY FULL-AUTO SHUT OFF AIR SCREWDRIVER



## 34121PLWA

INDEX NO.	DESCRIPTION	REQ'D NO.	INDEX NO.	DESCRIPTION	REQ'D NO.
01	Motor Housing	1	52	Washer	1
02	O-Ring	3	53	Retainer	1
03	Shut-off Valve	1	54	Clutch Housing	1
04	Washer	1	55	Rubber Ring	1
05	Handle Bushing	1	56	Screwdriver	1
06	Throttle Valve Plunger	1	57	Bit ( Option )	
07	Rear Plate Space	1	58	Spring Pin	1
08	Ball Bearing	1	59	Spring Pin	1
09	Rear End Plate	1	60	Hanger	1
10	Cylinder	1	61	Retainer	1
11	Rotor Blade	5	62	Spring	1
13	Front End Plate	1	63	Throttle Valve	1
14	Spring Pin	1	64	Steel Ball	1
15	Ball Bearing	1	65	O-Ring	1
24	Washer	1	66	Bushing	1
25	Gear Housing	1	67	Pin	1
26	Ball Bearing	1	68	Trigger Pin	1
27	Retainer	1	69	Reverse Valve	1
28	Spring	1	70	Reverse Knob	1
29	Retainer	1	71	Screw	1
30	Rear Clutch	1	72	Steel Ball	1
31	Ball Holder	1	73	Spring	1
32	Steel Ball	18	74	Spring Pin	1
33	Pilot Pin	1	75	Trigger	1
34	Pin	1	76	Pin	1
35	Steel Ball	3	77	Pin	1
36	Spring	1	78	Rubber Grip	1
37	Standard Anvil	1	79	Air Inlet	1
38	Pin	3	80	Retainer	1
39	Band	1	81	O-Ring	1
40	Steel Ball	3	82	Muffler	1
41	Central Clutch	1	83	Exhaust Deflector	1
42	Washer	1	89	Rotor	1
44	Spring Collar	1	90	Washer	1
46	Adjustment Lock Ring	1	91	Planet Gear	3
47	Adjustment Nut	1	92	Pin	3
48	Retainer	1	93	Front Gear Head	1
49	Bushing	1	94	Torque Setting Spring	1
50	Release Sleeve	1			
51	Spring	1	TK	Tune-Up Kit { incl. 2 ( 3 ).11 ( 5 ).28.32 ( 18 ).35 ( 3 ).36.40 ( 3 ).51.62.64.65.72.73.81.94 }	

★ Must be Purchased in Assembly Set

● Recommended not to be purchased alone due to assembly difficulty