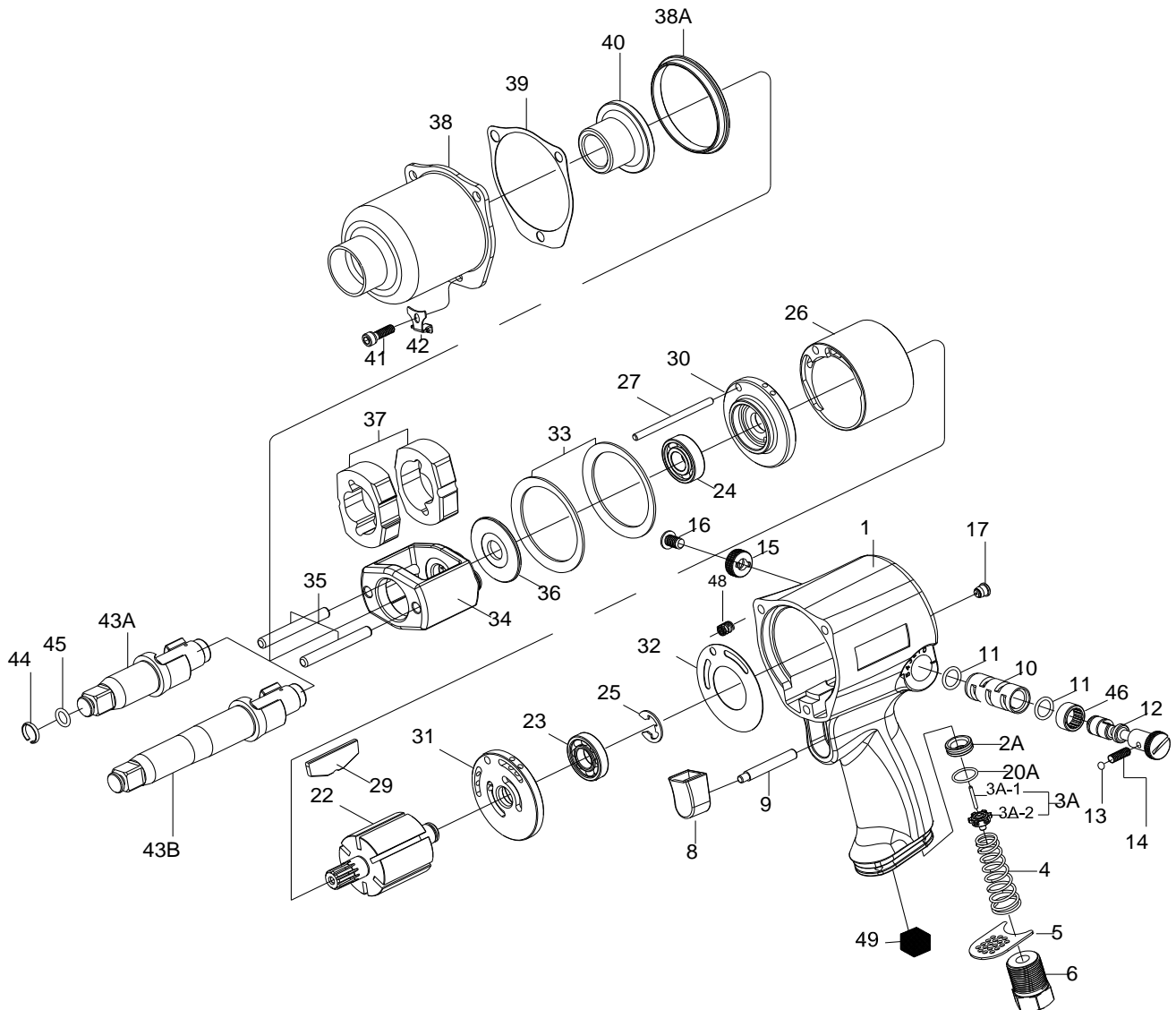


1/2" SQ. DR.SUPER DUTY IMPACT WRENCH



8541/8541-2

INDEX NO.	DESCRIPTION	REQ'D NO.	INDEX NO.	DESCRIPTION	REQ'D NO.
★ 1	Housing Assembly { incl.10.17.46.48 (3) }	1	27	Cylinder Dowel	1
2A	Throttle Valve Seat	1	29	Rotor Blade	6
★ 3A	Throttle Valve Assembly (incl.3A-1.3A-2)	1	30	Front End Plate	1
● 3A-1	Throttle Valve Pin	1	31	Rear End Plate	1
● 3A-2	Throttle Valve	1	32	Gasket	1
4	Spring	1	33	Motor Clamp Washer	2
5	Exhaust Deflector	1	34	Hammer Frame	1
6	Air Inlet	1	35	Hammer Pin	2
★ 8	Trigger Assembly (incl.9)	1	36	Washer	1
9	Trigger Pin	1	37	Hammer	2
● 10	Reverse Valve Bushing	1	38	Hammer Case	1
11	O-Ring	2	38A	Separator	1
12	Reverse Valve	1	39	Gasket	1
13	Steel Ball	1	40	Bushing	1
14	Spring	1	41	Screw	3
15	Reverse Valve Knob	1	42	Trigger Retainer	1
16	Screw	1	43A	Standard Anvil (for KI-8541)	1
● 17	Grease Fitting	1	43B	2" Extended Anvil (for KI-8541-2)	1
20A	O-Ring	1	44	Socket Retainer	1
22	Rotor	1	45	O-Ring	1
23	Ball Bearing	1	● 46	Reverse Valve Bushing Gear	1
24	Ball Bearing	1	● 48	Heli-Coil	3
25	Retainer	1	49	Muffler Element	1
26	Cylinder	1	TK	Tune-Up Kit { 4.11 (2).13.14.23.24.25.29 (6).32.39.44.45.49 }	

★ Must be Purchased in Assembly Set

● Recommended not to be purchased alone due to assembly difficulty

PA1-08541-3

20100319R3