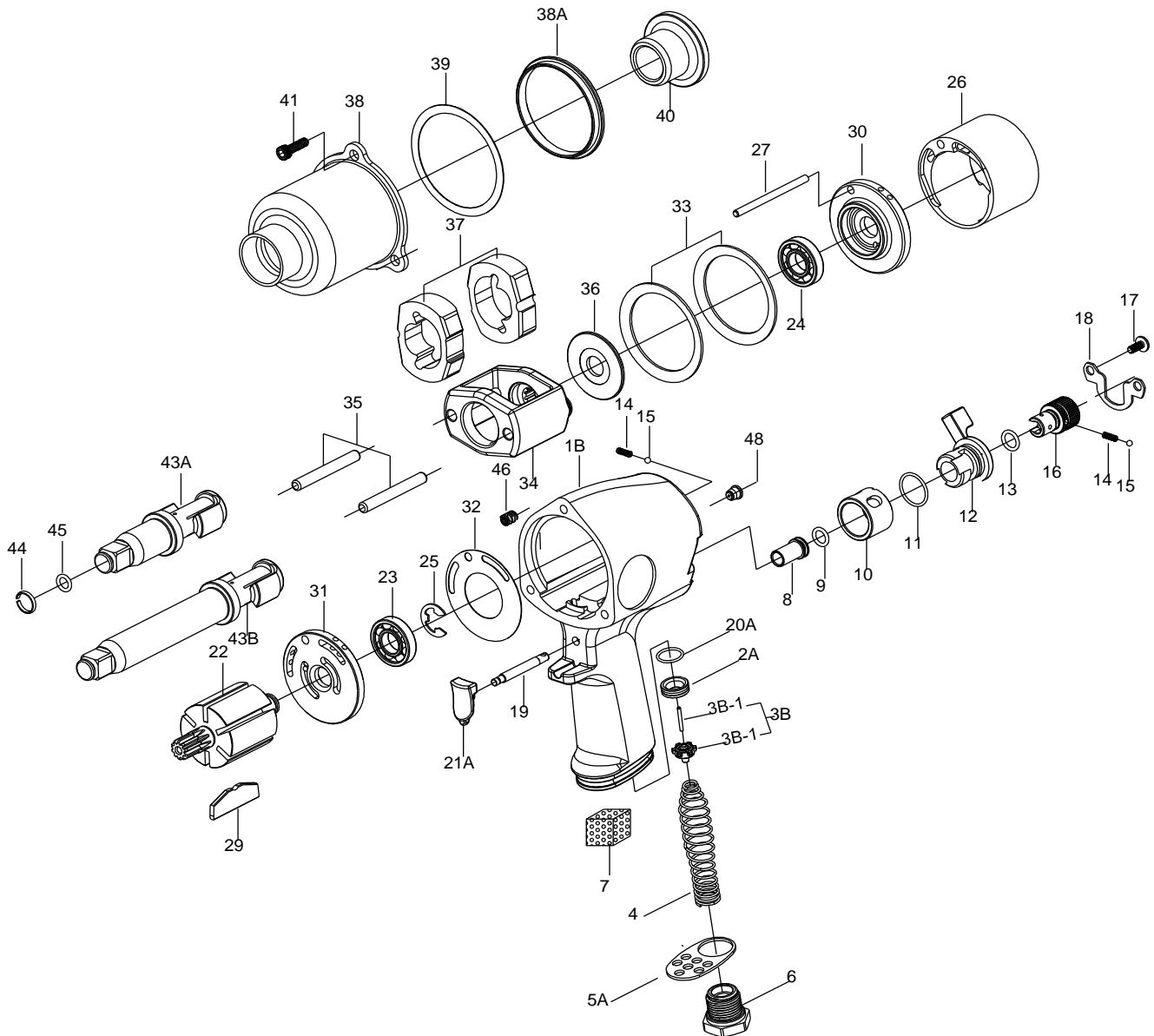


# 1/2" SQ. DR.SUPER DUTY IMPACT WRENCH



## 856/856-2

INDEX NO.	DESCRIPTION	REQ'D NO.	INDEX NO.	DESCRIPTION	REQ'D NO.
★ 1B	Housing Assembly ( incl.8.9.10.46.48 )	1	24	Ball Bearing	1
2A	Throttle Valve Seat	1	25	Retainer	1
★ 3B	Throttle Valve Assembly ( incl.3b-1.3b-2 )	1	26	Cylinder	1
● 3B-1	Throttle Valve Pin	1	27	Cylinder Dowel	1
● 3B-2	Throttle Valve	1	29	Rotor Blade	6
4	Spring	1	30	Front End Plate	1
5A	Exhaust Deflector	1	31	Rear End Plate	1
6	Air Inlet	1	32	Gasket	1
7	Exhaust Element	1	33	Motor Clamp Washer	2
● 8	Guide Tube	1	34	Hammer Frame	1
● 9	O-Ring	1	35	Hammer Pin	2
● 10	Reverse Valve Bushing	1	36	Washer	1
11	O-Ring	1	37	Hammer	2
12	Reverse Valve	1	38	Hammer Case	1
13	O-Ring	1	38A	Separator	1
14	Spring	2	39	Gasket	1
15	Steel Ball	2	40	Bushing	1
16	Reverse Valve Knob	1	41	Screw	3
17	Screw	2	43A	Standard Anvil ( for KI-856 )	1
18	Retainer	1	43B	2" Extended Anvil ( for KI-856-2 )	1
● 19	Trigger Pin	1	44	Socket Retainer	1
20A	O-Ring	1	45	O-Ring	1
★ 21A	Trigger Assembly ( incl.19 )	1	● 46	Heli-Coil	3
22	Rotor	1	● 48	Grease Fitting	1
23	Ball Bearing	1	TK	Tune-Up Kit {4.9.11.13.14.15.23.24.25.29 ( 6 ).32.39.44.45 }	1

★ Must be Purchased in Assembly Set

● Recommended not to be purchased alone due to assembly difficu

PA1-00856-3

20090415R2