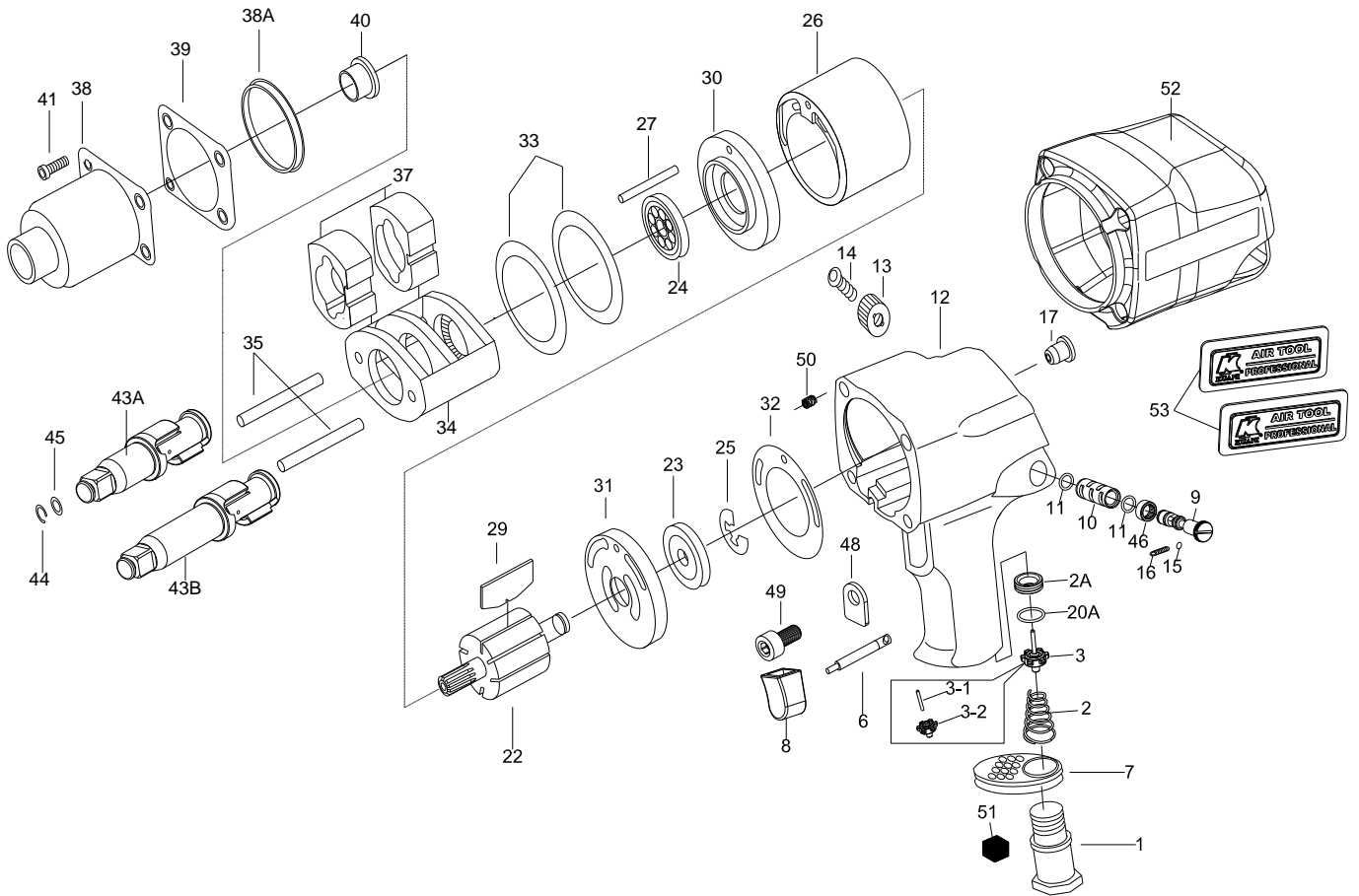


1/2" SQ. DR.SUPER DUTY IMPACT WRENCH



8571/8571-2

INDEX NO.	DESCRIPTION	REQ'D NO.	INDEX NO.	DESCRIPTION	REQ'D NO.
1	Air Inlet	1	29	Rotor Blade	6
2	Spring	1	30	Front End Plate	1
★ 2A	Throttle Valve Seat	1	31	Rear End Plate	1
★ 3	Throttle Valve Assembly (incl.3A-1.3A-2)	1	32	Gasket	1
● 3-1	Throttle Valve Pin	1	33	Motor Clamp Washer	2
● 3-2	Throttle Valve	1	34	Hammer Frame	1
● 6	Trigger Pin	1	35	Hammer Pin	2
7	Exhaust Deflector	1	37	Hammer	2
★ 8	Trigger Assembly (incl.6)	1	38	Hammer Case	1
9	Reverse Valve	1	38A	Separator	1
● 10	Reverse Valve Bushing	1	39	Gasket	1
11	O-Ring	2	40	Bushing	1
★ 12	Housing Assembly { incl.10.17.46.50 (4) }	1	41	Screw	4
13	Reverse Valve Knob	1	43A	Standard Anvil (for KI-8571)	1
14	Screw	1	43B	2" Extended Anvil (for KI-8571-2)	1
15	Steel Ball	1	44	Socket Retainer	1
16	Spring	1	45	O-Ring	1
● 17	Grease Fitting	1	● 46	Reverse Valve Bushing Gear	1
20A	O-Ring	1	48	Trigger Retainer	1
22	Rotor	1	49	Screw	1
23	Ball Bearing	1	● 50	Heli-Coil	4
24	Ball Bearing	1	51	Muffler Element	1
25	Retainer	1	52	Rubber Grip	1
26	Cylinder	1	53	Tag	2
27	Cylinder Dowel	1	TK	Tune-Up Kit { incl.2.11 (2).15.16.20A.23.24.29 (6).32.39.44.45.51 }	

★ Must be Purchased in Assembly Set

● Recommended not to be purchased alone due to assembly difficulty

20130521R1