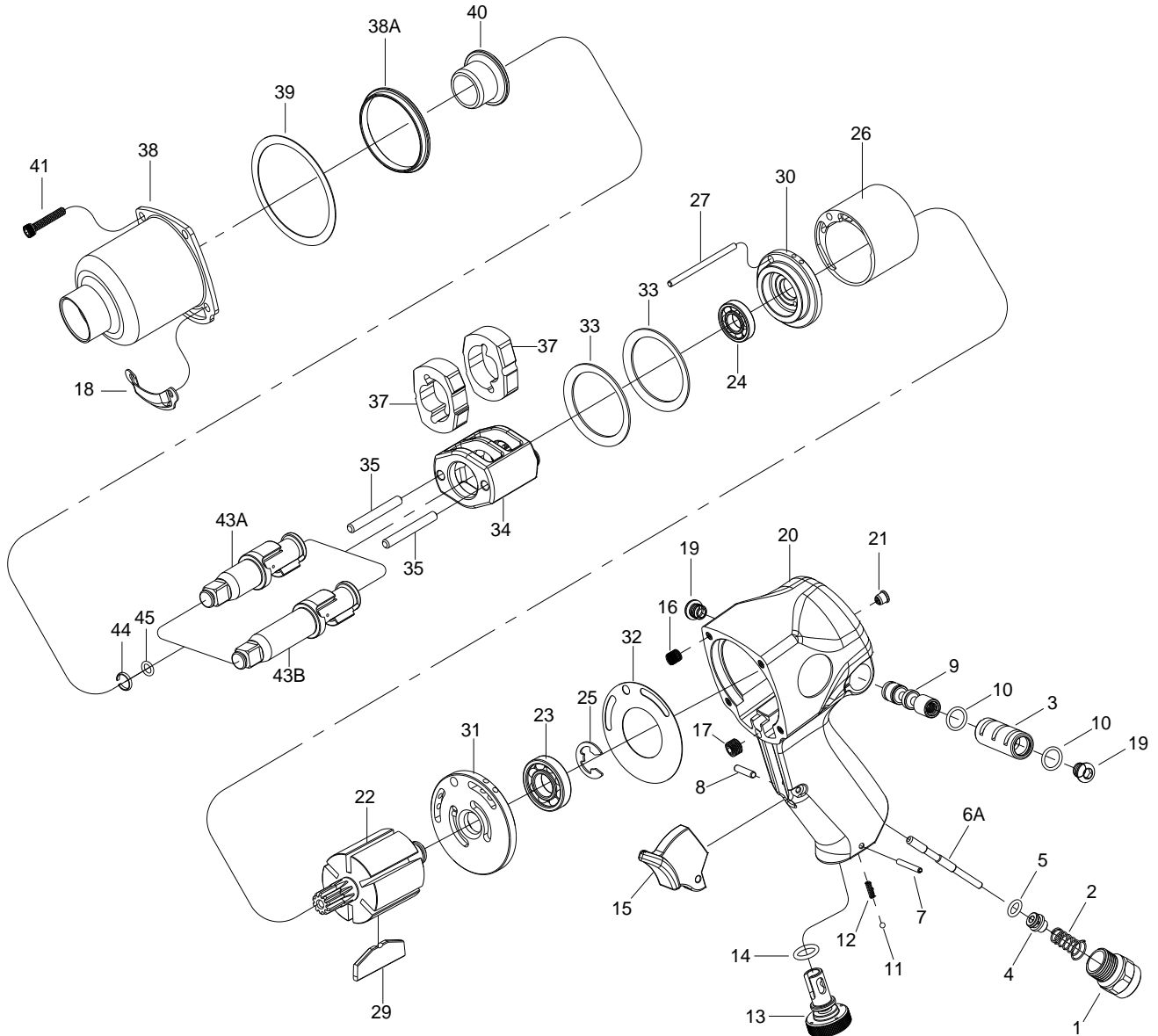


# 1/2" SQ. DR. SUPER DUTY IMPACT WRENCH



## 8575/8575-2

INDEX NO.	DESCRIPTION	REQ'D NO.	INDEX NO.	DESCRIPTION	REQ'D NO.
1	Air Inlet	1	24	Ball Bearing	1
2	Spring	1	25	Retainer	1
● 3	Reverse Valve Bushing	1	26	Cylinder	1
4	Throttle Valve	1	27	Cylinder Dowel	1
5	O-Ring	1	29	Rotor Blade	6
6A	Throttle Valve Plunger	1	30	Front End Plate	1
7	Spring Pin	1	31	Rear End Plate	1
8	Pin	1	32	Gasket	1
9	Reverse Valve	1	33	Motor Clamp Washer	2
10	O-Ring	2	34	Hammer Frame	1
11	Steel Ball	1	35	Hammer Pin	2
12	Spring	1	37	Hammer	2
13	Air Regulator	1	38	Hammer Case	1
14	O-Ring	1	38A	Separator	1
15	Trigger	1	39	Gasket	1
● 16	Heli-Coil	4	40	Bushing	1
● 17	Set Screw	1	41	Screw	4
18	Exhaust Deflector	1	★ 43A	Standard Anvil ( for KI-8575 ) { incl. 44.45 }	1
19	Screw	2	★ 43B	2" Extended Anvil ( for KI-8575-2 ) { incl. 44.45 }	1
★ 20	Motor Housing Assembly { incl. 3.16 ( 4 ) .17.21 }	1	● 44	Socket Retainer	1
● 21	Grease Fitting	1	● 45	O-Ring	1
22	Rotor	1	TK	Tune-Up Kit { incl. 2.5.10 ( 2 ) .14.23.24.25.29 ( 6 ) .44.45 }	
23	Ball Bearing	1			

★ Must be Purchased in Assembly Set

● Recommended not to be purchased alone due to assembly difficulty