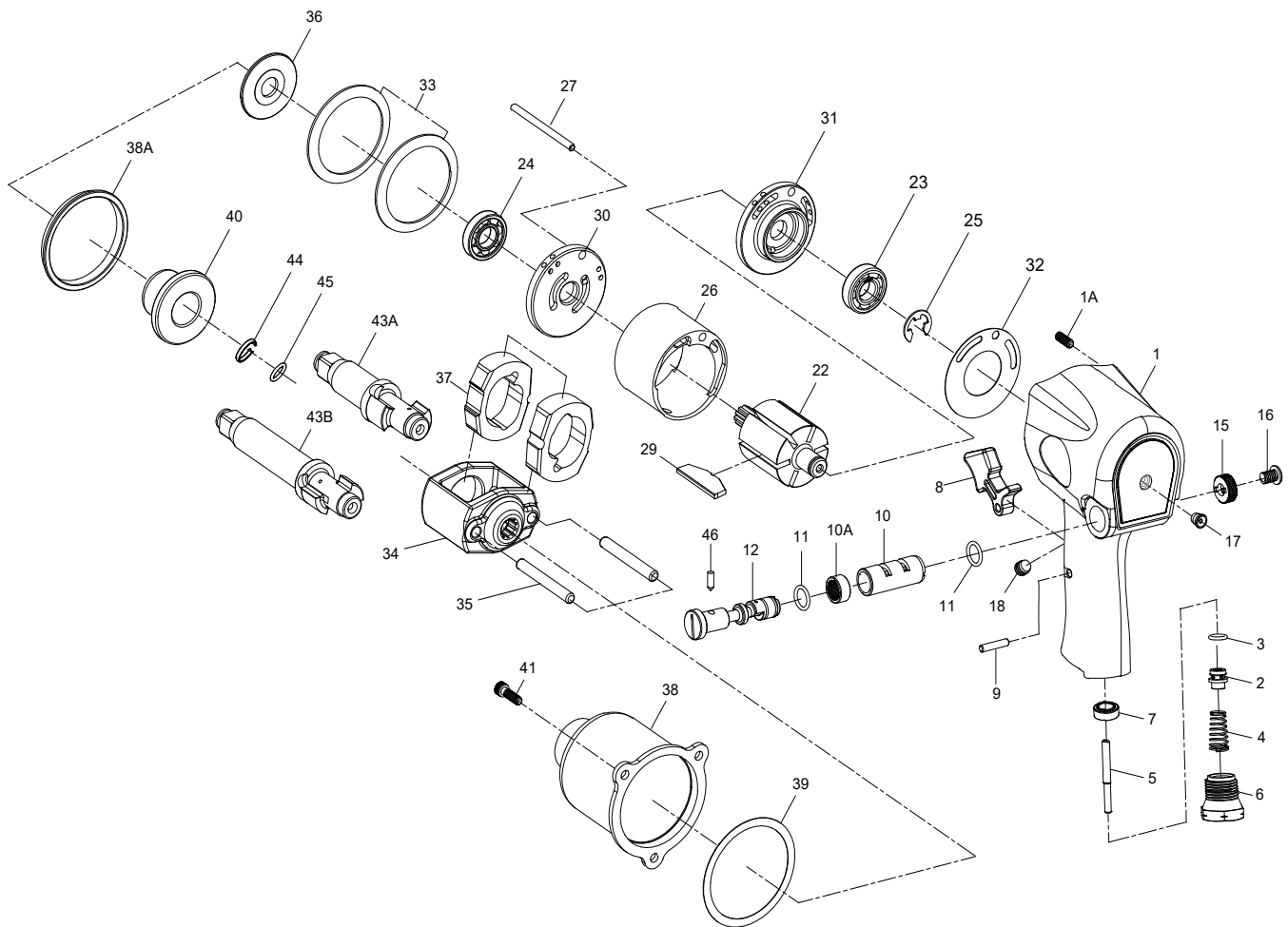


# 1/2" SQ. DR. SUPER DUTY IMPACT WRENCH



## 858MT/858-2MT

INDEX NO.	DESCRIPTION	REQ'D NO.	INDEX NO.	DESCRIPTION	REQ'D NO.
★ 1	Housing Assembly ( incl.1A.7.10.10A.17.18 )	1	26	Cylinder	1
● 1A	Heli-Coil	3	27	Cylinder Dowel	1
2	Throttle Valve	1	29	Rotor Blade	6
3	O-Ring	1	30	Front End Plate	1
4	Spring	1	31	Rear End Plate	1
5	Throttle Valve Plunger	1	32	Gasket	1
6	Air Inlet	1	33	Motor Clamp Washer	2
● 7	Throttle Valve Seat	1	34	Hammer Frame	1
8	Trigger	1	35	Hammer Pin	2
9	Trigger Pin	1	36	Washer	1
● 10	Reverse Valve Bushing	1	37	Hammer	2
● 10A	Reverse Valve Bushing Gear	1	38	Hammer Case	1
11	O-Ring	2	38A	Separator	1
12	Reverse Valve	1	39	Gasket	1
15	Reverse Valve Knob	1	40	Bushing	1
16	Screw	1	41	Screw	3
● 17	Grease Fitting	1	43A	Standard Anvil ( for KI-858 )	1
● 18	Set Screw	1	43B	2" Extended Anvil ( for KI-858-2 )	1
22	Rotor	1	44	Socket Retainer	1
23	Ball Bearing	1	45	O-Ring	1
24	Ball Bearing	1	46	Pin	1
25	Retainer	1	TK	Tune-Up Kit { 3.4.11(2).23.24.25.29(6).32.39.44.45 }	

★ Must be Purchased in Assembly Set

● Recommended not to be purchased alone due to assembly difficulty

PA2-00858MT-2

20090504R1