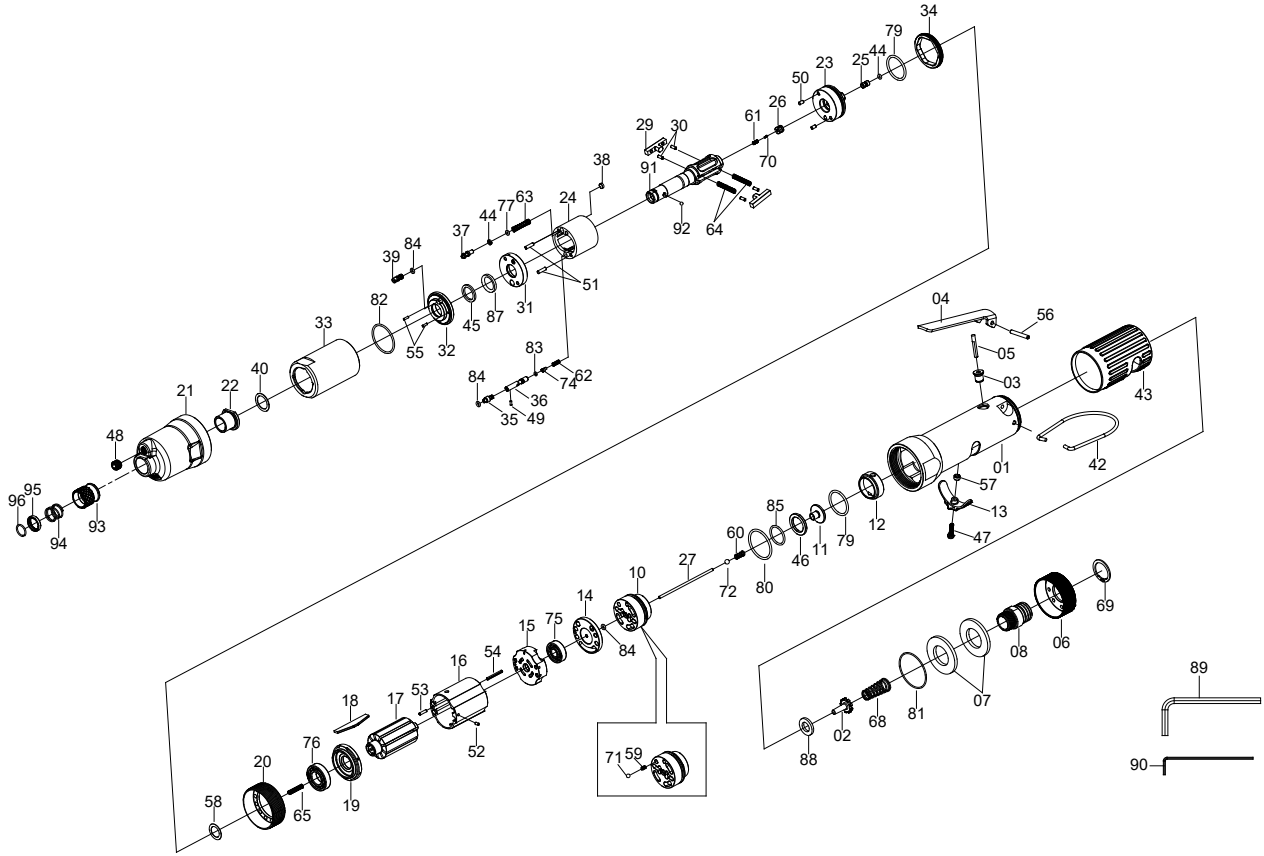


1/4" HEX. OIL-PULSE TOOL



9160-QC

INDEX NO.	DESCRIPTION	REQ'D NO.	INDEX NO.	DESCRIPTION	REQ'D NO.
★ 01	Motor Housing Assembly (incl.03)	1	48	Screw	1
02	Throttle Valve	1	49	Pin	1
● 03	Bushing	1	50	Pin	2
04	Trigger	1	51	Pin	2
05	Valve Stem	1	52	Pin	1
06	Exhaust Deflector	1	53	Pin	1
07	Muffler Element	2	54	Pin	1
08	Air Inlet	1	55	Pin	2
★ 10	Reverse Valve (incl.59.71)	1	56	Pin	1
11	Shut-off Valve	1	57	Spacer	1
12	Bumper Spacer	1	58	Spacer	1
13	Reverse Knob	1	● 59	Spring	1
14	Plate Spacer	1	60	Spring	1
15	Rear End Plate	1	61	Spring	1
16	Cylinder	1	62	Spring	1
17	Rotor	1	63	Spring	1
18	Rotor Blade	9	64	Spring	2
19	Front End Plate	1	65	Spring	1
20	Separator	1	68	Spring	1
21	Clutch Housing	1	69	Retainer	1
22	Bushing	1	70	Choke Valve	1
23	Plate	1	● 71	Steel Ball	1
24	Hydraulic Cylinder	1	72	Steel Ball	1
25	Piston	1	74	Pressure Regulator Valve	1
26	Check Valve Cover	1	75	Ball Bearing	1
27	Throttle Valve Plunger	1	76	Ball Bearing	1
★ 29	Driving Blade Assembly { incl.30 (4) }	2	77	Retainer	1
● 30	Pin	4	79	O-Ring	2
31	Bushing Spacer	1	80	O-Ring	1
32	Front Liner Plate	1	81	O-Ring	1
33	Liner Casing	1	82	O-Ring	1
34	Lock Nut	1	83	O-Ring	1
35	Screw	1	84	O-Ring	3
36	Governor Valve	1	85	O-Ring	1
37	Piston	1	87	D-Ring	1
38	Piston Cover	1	88	Washer	1
39	Screw	1	89	Hexagon Wrench	1
40	Washer	1	90	Hexagon Wrench	1
42	Hanger	1	91	QC Spindle	1
43	Rubber Grip	1	92	Ball	1
44	O-Ring	2	93	Ball Stopper	1
45	Washer	1	94	Ball Stopper Spring	1
46	Retainer	1	95	Spring Stopper	1
47	Screw	1	96	Retainer Ring	1

★ Must be Purchased in Assembly Set

● Recommended not to be purchased alone due to assembly difficulty