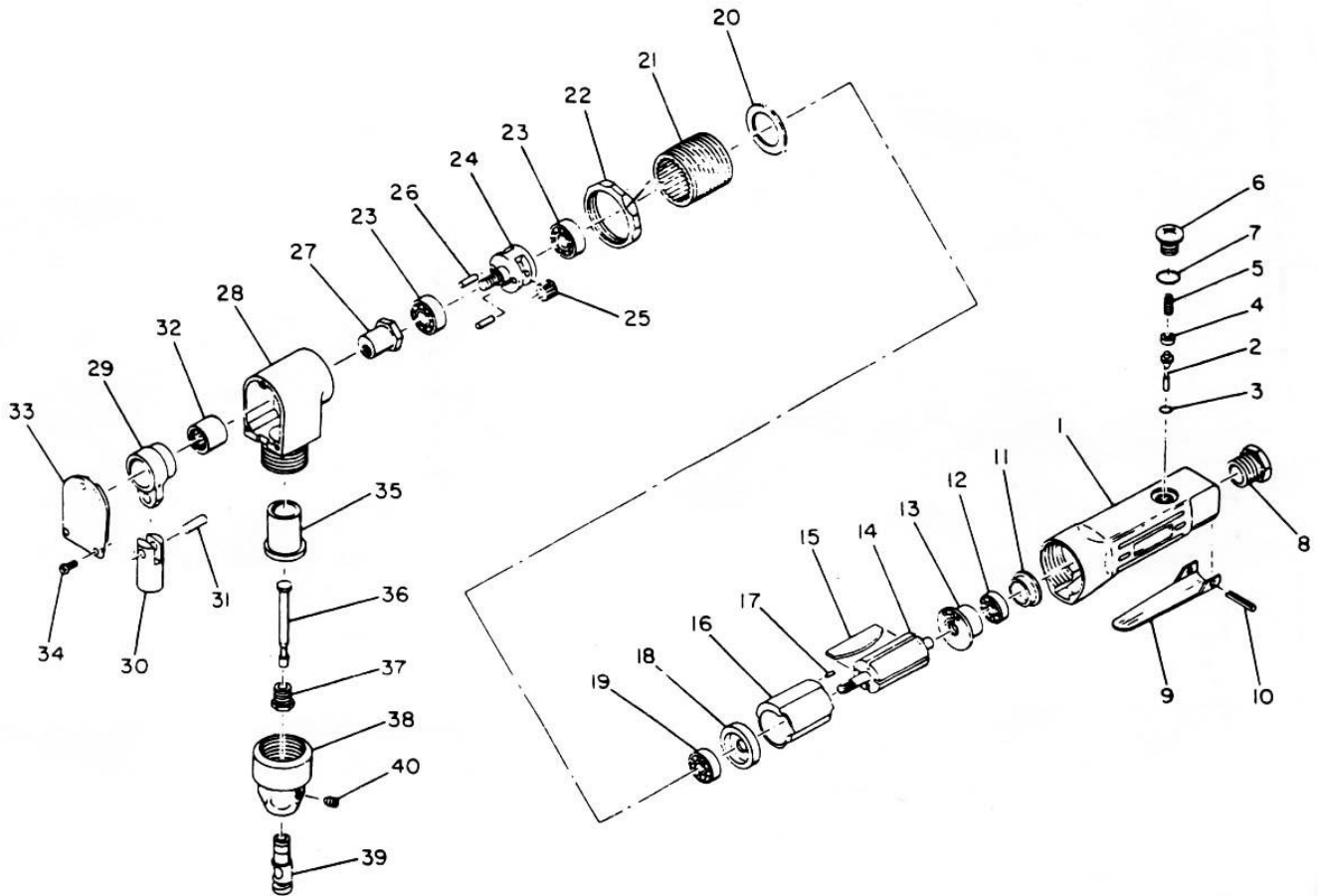


HEAVY DUTY AIR NIBBLER



4809

INDEX NO.	DESCRIPTION	REQ'D NO.	INDEX NO.	DESCRIPTION	REQ'D NO.
01	Motor Housing	1	22	Gear Case Nut	1
02	Throttle Valve	1	23	Spindle Bearing	2
03	Throttle Valve Seal	1	24	Spindle	1
04	Throttle Valve Spring Seat	1	25	Spindle Planet Gear	2
05	Throttle Valve Spring	1	26	Spindle Planet Gear Shaft	2
06	Throttle Valve Plug	1	27	Eccentric Nut	1
07	Throttle Valve Plug Seal	1	28	Nibbler Housing	1
08	Inlet Bushing	1	29	Nibbler Crank	1
09	Throttle Lever	1	30	Crankshaft	1
10	Throttle Lever Pin	1	31	Crankshaft Pin	1
11	End Plate Cap	1	32	Crank Bearing	1
12	Rear Rotor Bearing	1	33	Nibbler Housing Cover	1
13	Rear End Plate	1	34	Housing Cover Screw	3
14	Rotor	1	35	Crankshaft Bushing	1
15	Vane	4	36	Cutter	1
16	Cylinder	1	37	Cutter Lock Nut	1
17	Cylinder Dowel	1	38	Nibbler Housing Nut	1
18	Front End Plate	1	39	Cutter Die	1
19	Front Rotor Bearing	1	40	Cutter Die Set Screw	1
20	Motor Clamp Washer	1	-	Nameplate	1
21	Gear Case	1	-	Nameplate Screw	2

0000.00.00

2003.05.28 2019.09.04