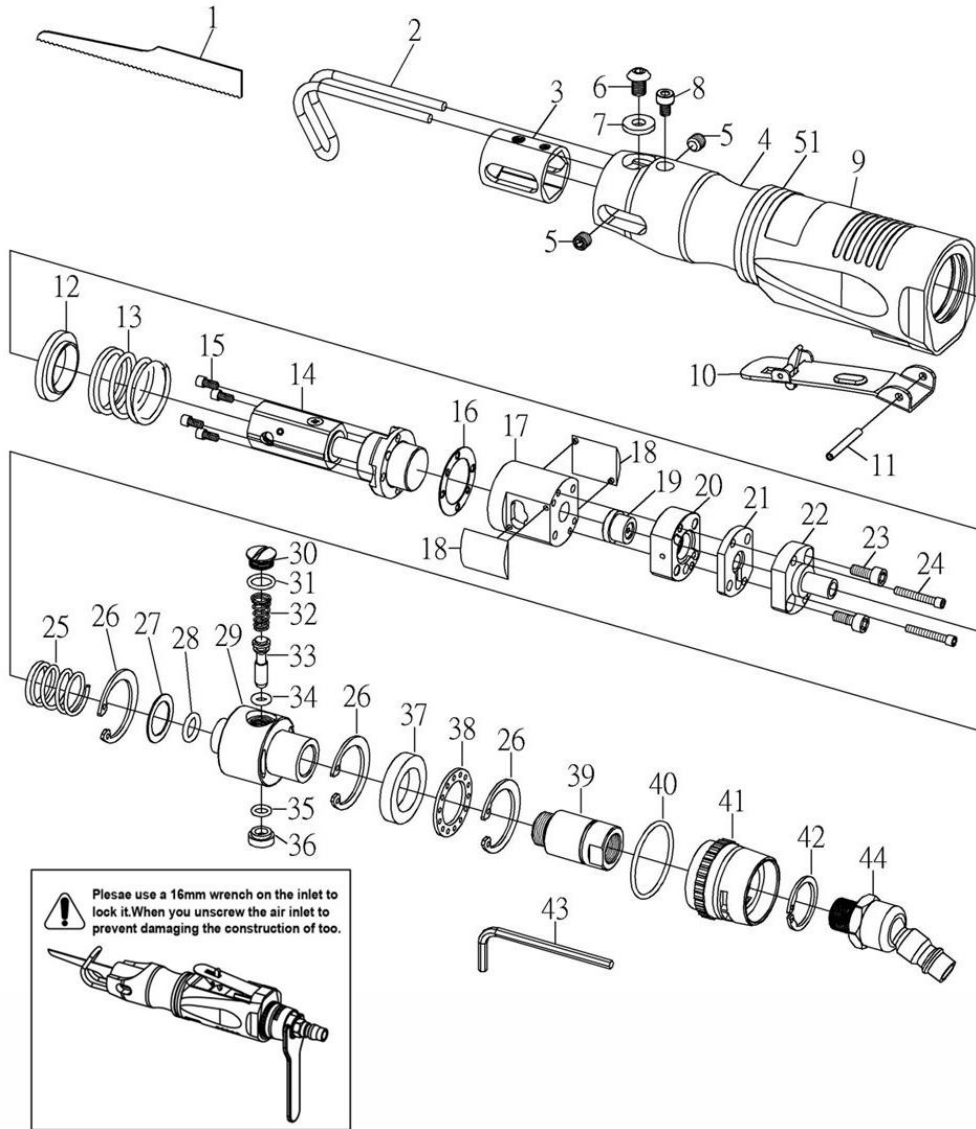


HEAVY DUTY AIR BODY SAW



4833

INDEX NO.	DESCRIPTION	REQ'D NO.	INDEX NO.	DESCRIPTION	REQ'D NO.
01	Saw Blade (24T)	1	23	Screw	2
01A	Saw Blade (32T)	1	24	Screw	2
02	Work Guide	1	25	Spring	1
03	Bushing	1	26	Retaining Ring	3
04	Body	1	27	Steel Plate	1
05	Screw	2	28	O-Ring	1
06	Set Screw	1	29	Valve Housing	1
07	Washer	1	30	Valve Stem Rear Cover	1
08	Screw	1	31	O-Ring	1
09	Body Cover	1	32	Valve Spring	1
10	Throttle Lever	1	33	Valve Stem	1
11	Lever Pin	1	34	O-Ring	1
12	Washer	1	35	O-Ring	1
13	Shock Absorbent Spring	1	36	Valve Stem Bushing	1
14	Cylinder Head Assembly	1	37	Muffler	1
15	Screw	4	38	Muffler	1
16	Gasket	1	39	Air Inlet	1
17	Cylinder	1	40	O-Ring	1
18	Muffler	2	41	Muffler Cap	1
19	Automatic Valve	1	42	Retaining Ring	1
20	Valve Chest	1	43	Wrench (3mm)	1
21	Valve Seat	1	44	Air Plug	1
22	Adaptor	1	51	O-Ring	1

0000.00.00

2019.09.04 2019.09.19