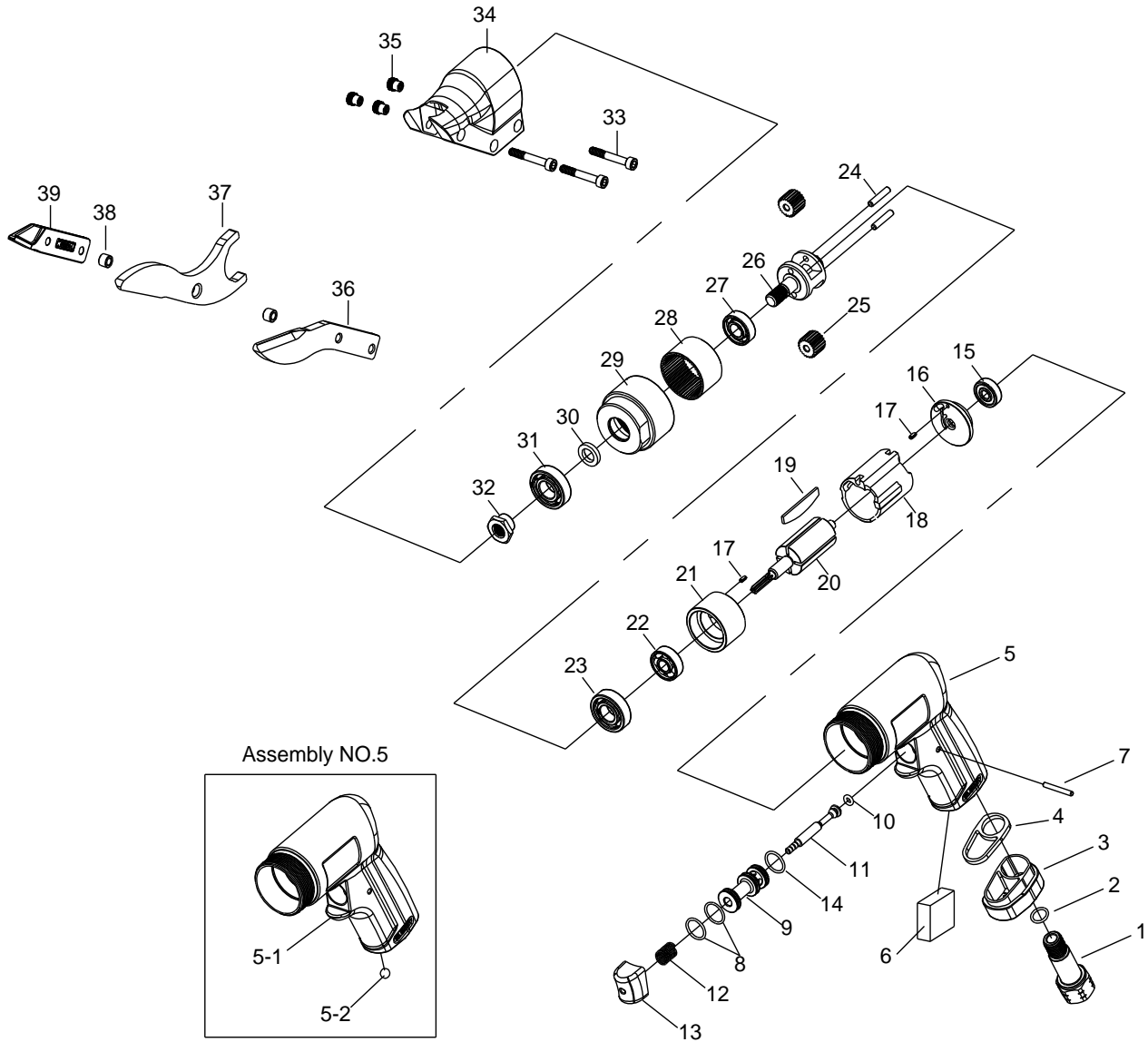


HEAVY DUTY AIR METAL SHEARS



4874

INDEX NO.	DESCRIPTION	REQ'D NO.	INDEX NO.	DESCRIPTION	REQ'D NO.
1	Air Inlet	1	20	Rotor	1
2	O-Ring	1	21	Front End Plate	1
3	Exhaust Deflector	1	22	Ball Bearing	1
4	Washer	1	23	Ball Bearing	1
★ 5	Housing Assembly (incl.5-1.5-2)	1	24	Pin	2
● 5-1	Motor Housing	1	25	Planet Gear	2
● 5-2	Steel Ball	1	26	Work Spindle	1
6	Muffler Element	1	27	Ball Bearing	1
7	Pin	1	28	Ring Gear	1
8	O-Ring	2	29	Lock Ring	1
9	Throttle Valve Seat	1	30	Washer	1
10	O-Ring	1	31	Ball Bearing	1
11	Power Regulator	1	32	Eccentric Nut	1
12	Spring	1	33	Screw	3
13	Trigger	1	34	Cutter Housing	1
14	O-Ring	1	35	Cutter Housing Nut	3
15	Ball Bearing	1	36	Left Blade	1
16	Rear End Plate	1	37	Center Blade	1
17	Spring Pin	2	38	Spacer	2
18	Cylinder	1	39	Right Blade	1
19	Rotor Blade	4	TK	Tune-Up Kit { 2.6.8 (2) .12.14.15.19 (4) .22.23.27.31. }	

★ Must be Purchased in Assembly Set

● Recommended not to be purchased alone due to assembly difficulty

PA3-04874-1

20100609R1