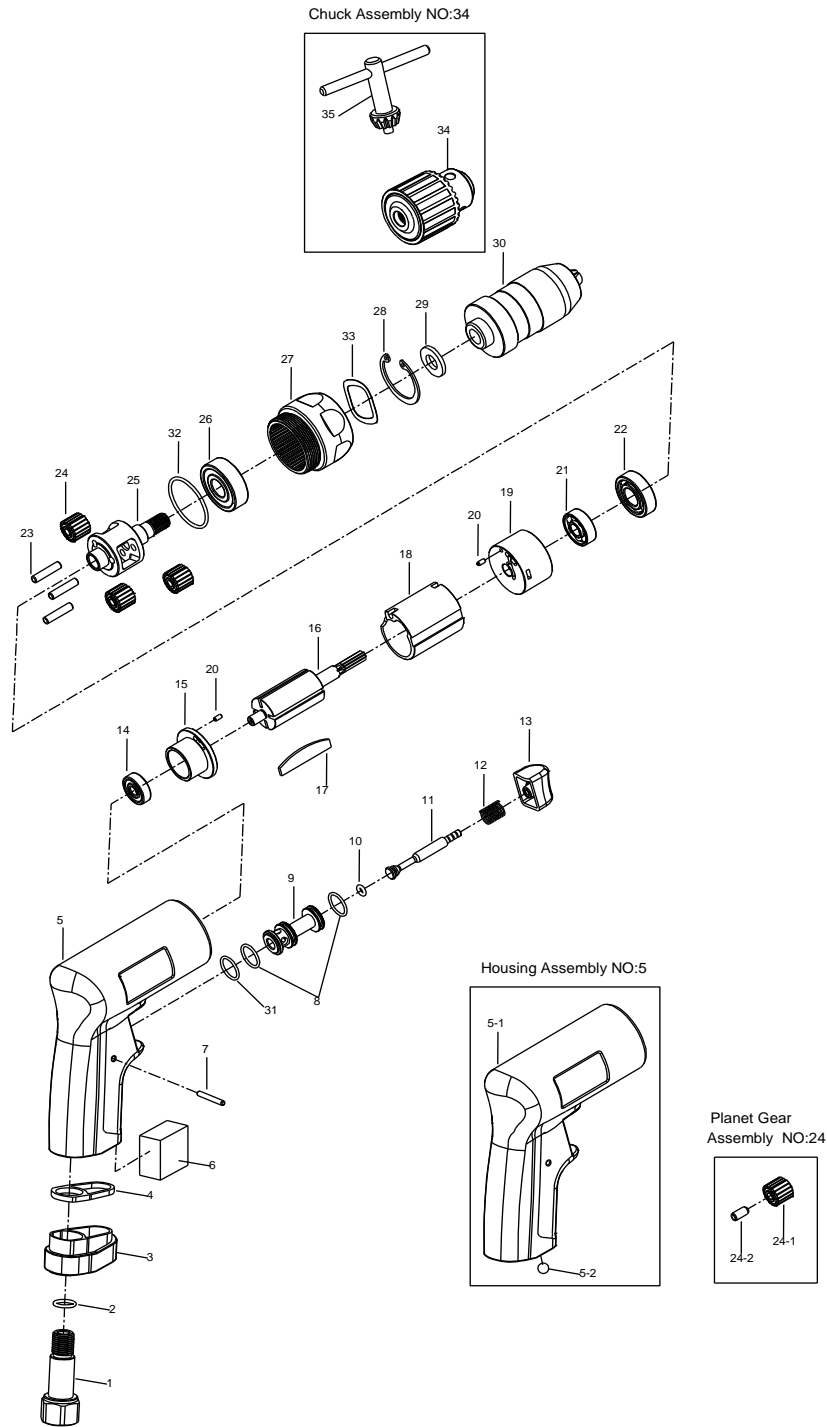


3/8" SUPER DUTY AIR DRILL



5316

INDEX NO.	DESCRIPTION	REQ'D NO.	INDEX NO.	DESCRIPTION	REQ'D NO.
1	Air Inlet	1	19	Front End Plate	1
2	O-Ring	1	20	Spring Pin	2
3	Exhaust Deflector	1	21	Ball Bearing	1
4	Washer	1	22	Ball Bearing	1
★ 5	Housing Assembly (incl.5-1.5-2)	1	23	Pin	3
● 5-1	Motor Housing	1	★ 24	Planet Gear Assembly (incl.24-1 (3) .24-2 (3))	3
● 5-2	Steel Ball	1	● 24-1	Planet Gear	3
6	Muffer Element	1	● 24-2	Bushing	3
7	Pin	1	25	Work Spinder	1
8	O-Ring	2	26	Ball Bearing	1
9	Throttle Valve Seat	1	27	Gear Housing	1
10	O-Ring	1	28	Retainer	1
11	Throttle Valve Plunger	1	29	Washer	1
12	Spring	1	30	Keyless Chuck (Option)	1
13	Trigger	1	31	O-Ring	1
14	Ball Bearing	1	32	O-Ring	1
15	Rear End Plate	1	33	Washer	1
16	Rotor	1	★ 34	3/8"Chuck Assembly (incl.35) (Option)	1
17	Rotor Blade	4	● 35	Chuck Key	1
18	Cylinder	1	TK	Tune-Up Kit { 2.6.8 (2).10.12.14.17 (4).21.22.26.31.32 }	

★ Must be Purchased in Assembly Set

● Recommended not to be purchased alone due to assembly difficulty

PA3-05316-4

20091009R2