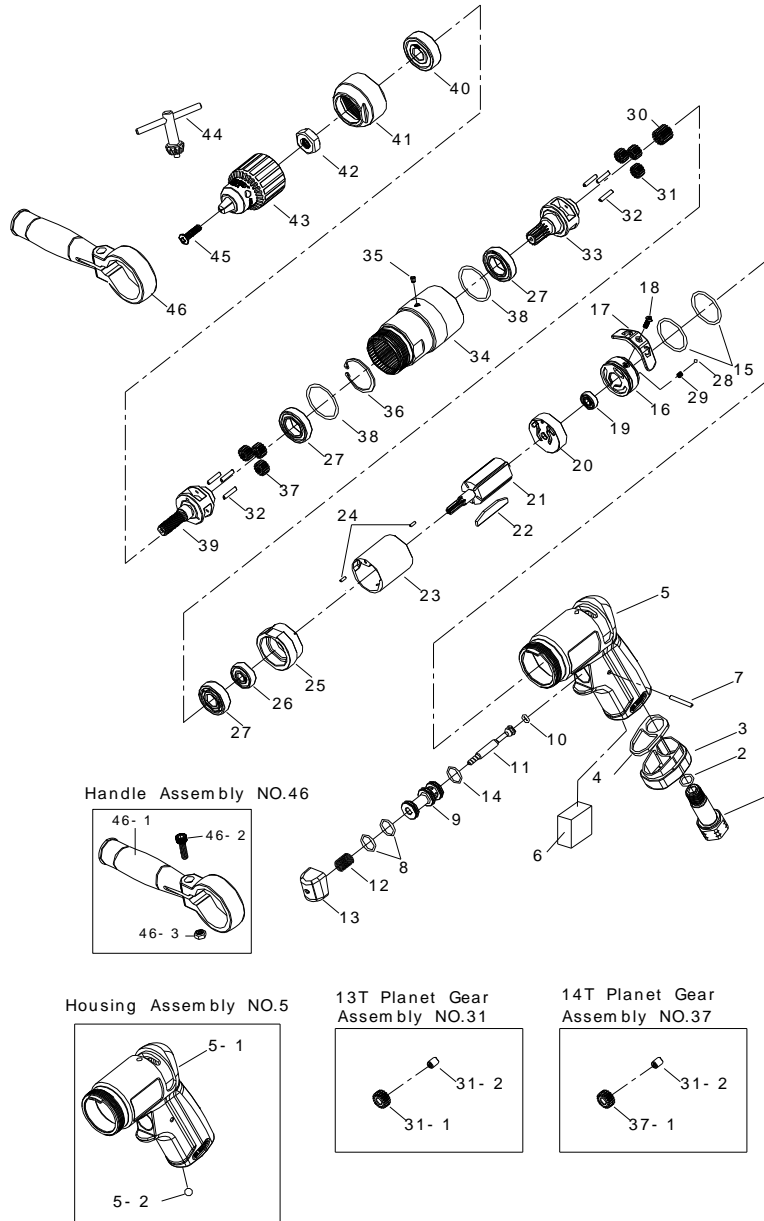


# 1/2" SUPER DUTY REVERSESEBIL AIR DRILL



5416

INDEX NO.	DESCRIPTION	REQ'D NO.	INDEX NO.	DESCRIPTION	REQ'D NO.
1	Air Inlet	1	27	Ball Bearing	3
2	O-Ring	1	28	Steel Ball	1
3	Exhaust Deflector	1	29	Spring	1
4	Washer	1	30	Main Gear	1
★ 5	Housing Assembly ( incl.5-1.5-2 )	1	★ 31	Planet Gear Assembly { incl.31-1( 3 ).31-2( 3 ) }	3
● 5-1	Motor Housing	1	● 31-1	Planet Gear	3
● 5-2	Steel Ball	1	● 31-2	Bushing	6
6	Muffler Element	1	32	Pin	6
7	Pin	1	33	Work Spinder	1
8	O-Ring	2	34	Gear Housing	1
9	Throttle Valve Seat	1	35	Grease Fitting	1
10	O-Ring	1	36	Retainer	1
11	Valve Stem	1	★ 37	Planet Gear Assembly { incl.31-2( 3 ).37-1( 3 ) }	3
12	Spring	1	● 37-1	Planet Gear	3
13	Trigger	1	38	O-Ring	2
14	O-Ring	1	39	Work Spinder	1
15	O-Ring	2	40	Ball Bearing	1
16	Reverse Valve	1	41	End Cap	1
17	Reverse Valve Knob	1	42	Washer	1
18	Screw	1	★ 43	Chuck Assembly { incl.44 }	1
19	Ball Bearing	1	● 44	Chuck Key	1
20	Rear End Plate	1	45	Screw	1
21	Rotor	1	★ 46	Side Spade Handle Assembly( incl.46-1.46-2.46-3 )	1
22	Rotor Blade	5	● 46-1	Side Spade Handle	1
23	Cylinder	1	● 46-2	Screw	1
24	Spring Pin	2	● 46-3	Lock Nut	1
25	Front End Plate	1	TK	Tune-Up Kit { incl.2.6.8 ( 2 ).10.12.14.15 ( 2 ).22 ( 5 ).28.29.38 ( 2 ) }	
26	Ball Bearing	1			

★ Must be Purchased in Assembly Set

● Recommended not to be purchased alone due to assembly difficulty

PA3-05416-2

20150727R1