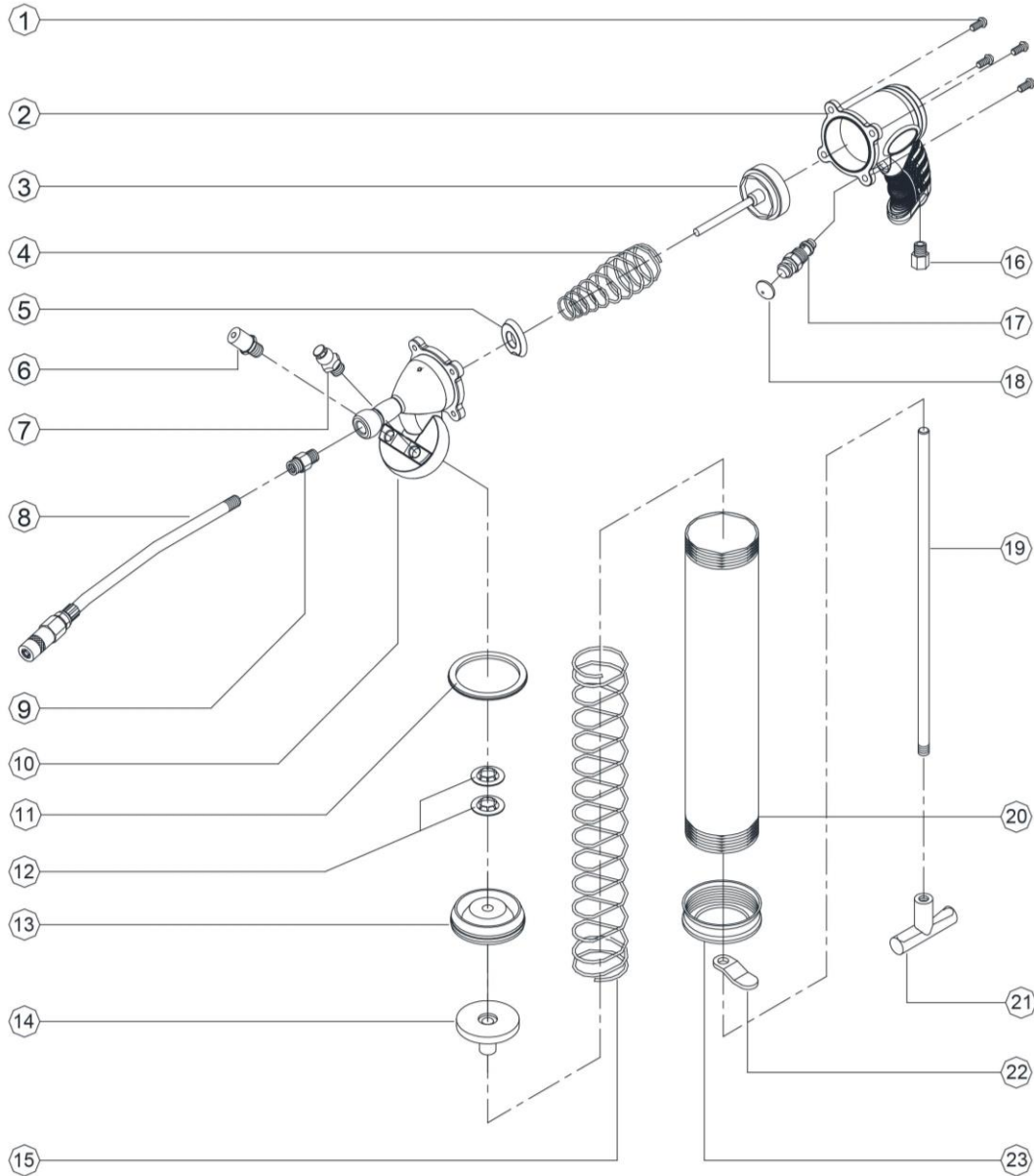


HEAVY DUTY COMPOSITE AIR GREASE GUN



7421-XAP40

INDEX NO.	DESCRIPTION	REQ'D NO.	INDEX NO.	DESCRIPTION	REQ'D NO.
01	Screw	4	13	Plunger	1
02	Finger Grip	1	14	Backlash Gasket	1
03	Piston	1	15	Long Spring	1
04	Spring	1	16	Air Inlet	1
05	Washer	1	17	Switch	1
06	Filler Plug	1	18	Trigger	1
07	Air Vent Valve	1	19	Piston Rod	1
08	Hex. Spout	1	20	Container Tube	1
09	Adapter	1	21	Handle	1
10	Housing Cap	1	22	Catch Plate	1
11	Gasket	1	23	End Cap	1
12	Nut	2			

0000.00.00

2015.06.10 2015.07.16

HEAVY DUTY COMPOSITE AIR GREASE GUN

7421-XAP40 OPERATING MANUAL

FEATURE

- 40:1 Ratio air motor
- Heavy duty composite body for lighter weight and easier use
- 3 Way loading - bulk, 14 oz cartridge, Air vent valve for purging remaining air
- Weight only 1 kg (empty)
- Working pressure 40 psi ~ 100 psi
- Output pressure 3600 psi

CAUTION

- The maximum rating listing as above should not be exceeded.
- This tool should only be used for its designed purpose and according to the instruction in this manual.
- Do not allow bystanders or children in the work area as they may cause distractions which may lead to mistakes and accidents.
- Carefully inspect the tool for damaged, loose or missing parts. If the unit is worn or damaged, do not use it and contact an authorized service center for evaluation or repair.
- The Single Shot Grease Gun must be primed after each refill or grease cartridge change. You should also check the priming of the gun before each use.
- For best performance and to extend products life, add a few drops of air tool oil through the air fitting at the bottom of the handle. If gun begins to cycle slowly or erratically, it is required certainly.

TROUBLESHOOTING

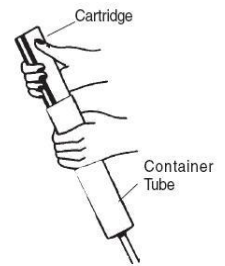
If your gun fails to work, first check for air pockets in the gun.

To remove trapped air, unscrew the gun head 1 to 1-1/2 turns and do as follows:

1. Draw back the plunger rod fully and release it quickly, Repeat several times.
2. Push plunger rod all the way in.
3. Tighten the head to the container tube.
4. Press air vent valve several times to expel the air.

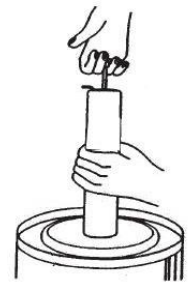
CARTRIDGE LOADING

1. Remove the gun head from the container tube.
2. Draw back the plunger handle completely.
3. Insert open end of cartridge into the container tube and push all the way in. Remove the seal or Pull tab end from the cartridge.
4. Reassemble the gun head to the container tube. Press the catch plate and release the piston rod. Pull down the plunger handle.



SUCTION FILLING

1. Remove the gun head from the container tube.
2. Submerge open end of the container tube into grease bucket about 2" deep and pull the plunger handle out slowly and engage rod into key slot.
3. Reassemble the gun head to the container tube. Press the catch plate and release the piston rod. Pull down the plunger handle.



FILLER PUMP FILLING

1. Draw back the plunger handle completely.
2. Insert the filler plug on the gun head into the valve on the pump.
3. Operate the pump until the container tube is full of grease.
4. Remove the filler plug from the valve on the pump.
5. Press the catch plate and release the piston rod. Pull down the plunger handle.

