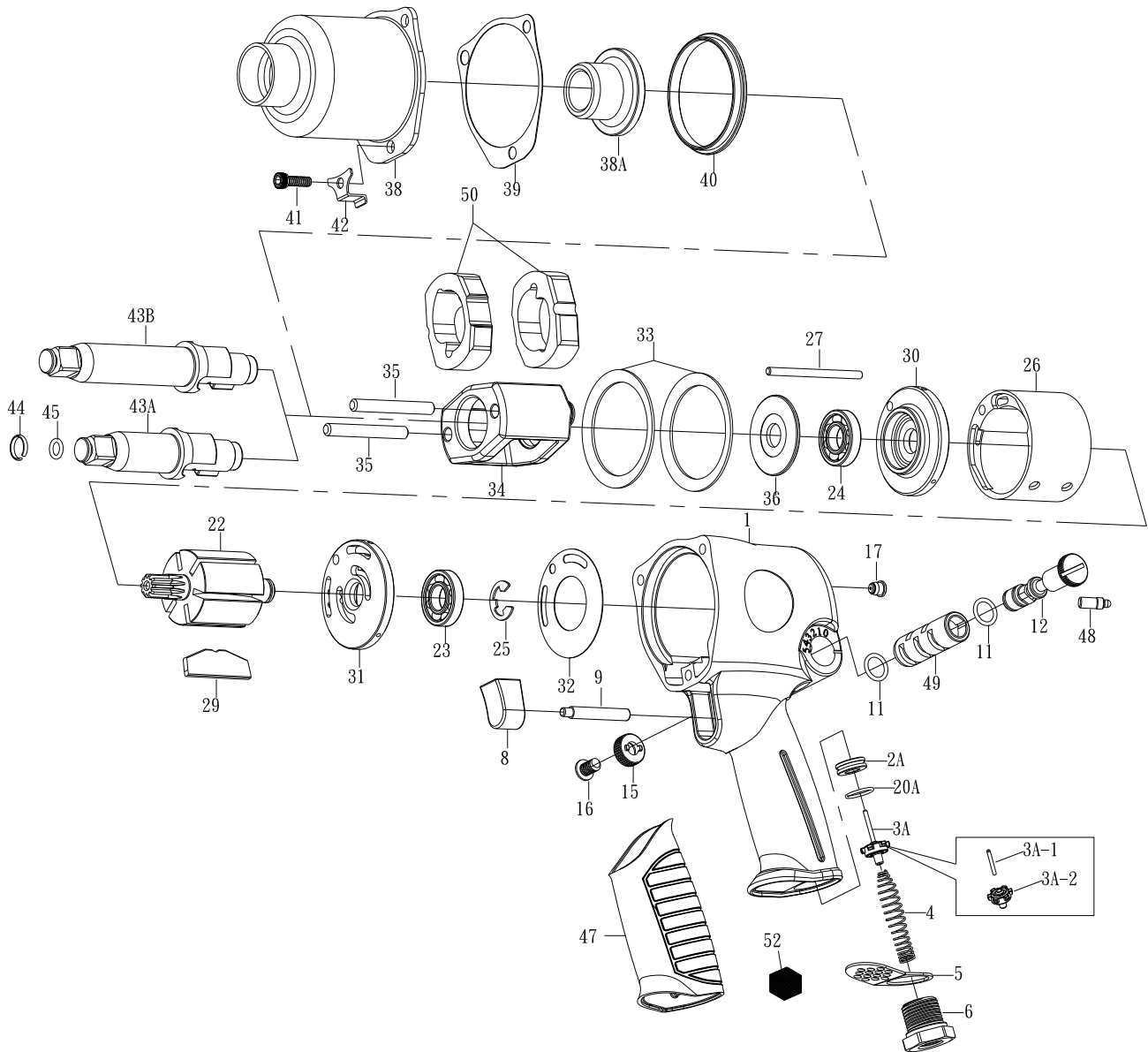


1/2" SQ. DR.SUPER DUTY IMPACT WRENCH



1434MT/1434MT-2

INDEX NO.	DESCRIPTION	REQ'D NO.	INDEX NO.	DESCRIPTION	REQ'D NO.
★ 1	Housing Assembly (incl.17.47.49)	1	30	Front End Plate	1
2A	Throttle Valve Seat	1	31	Rear End Plate	1
★ 3A	Throttle Valve Assembly (incl.3A-1.3A-2)	1	32	Gasket	1
● 3A-1	Throttle Valve Pin	1	33	Motor Clamp Washer	2
● 3A-2	Throttle Valve	1	34	Hammer Frame	1
4	Spring	1	35	Hammer Pin	2
5	Exhaust Deflector	1	36	Washer	1
6	Air Inlet	1	38	Hammer Case	1
★ 8	Trigger Assembly (incl.09)	1	38A	Bushing	1
● 9	Trigger Pin	1	39	Gasket	1
11	O-Ring	2	40	Separator	1
12	Reverse Valve	1	41	Screw	3
15	Reverse Valve Knob	1	42	Trigger Retainer	1
16	Screw	1	43A	Standard Anvil (for kl-1434MT)	1
● 17	Grease Fitting	1	43B	2" Extended Anvil (for kl-1434MT-2)	1
20A	O-Ring	1	44	Socket Retainer	1
22	Rotor	1	45	O-Ring	1
23	Ball Bearing	1	● 47	Rubber Grip	1
24	Ball Bearing	1	48	pin	1
25	Retainer	1	● 49	Reverse Valve Bushing	1
26	Cylinder	1	50	Hammer	2
27	Cylinder Dowel	1	52	Muffer Element	1
29	Rotor Blade	6	TK	Tune-Up Kit { 4.11 (2).20A.23.24.25.29 (6).32.39.44.45.52 }	1

★ Must be Purchased in Assembly Set

● Recommended not to be purchased alone due to assembly difficulty

PA1-01434MT-1

20111103R1