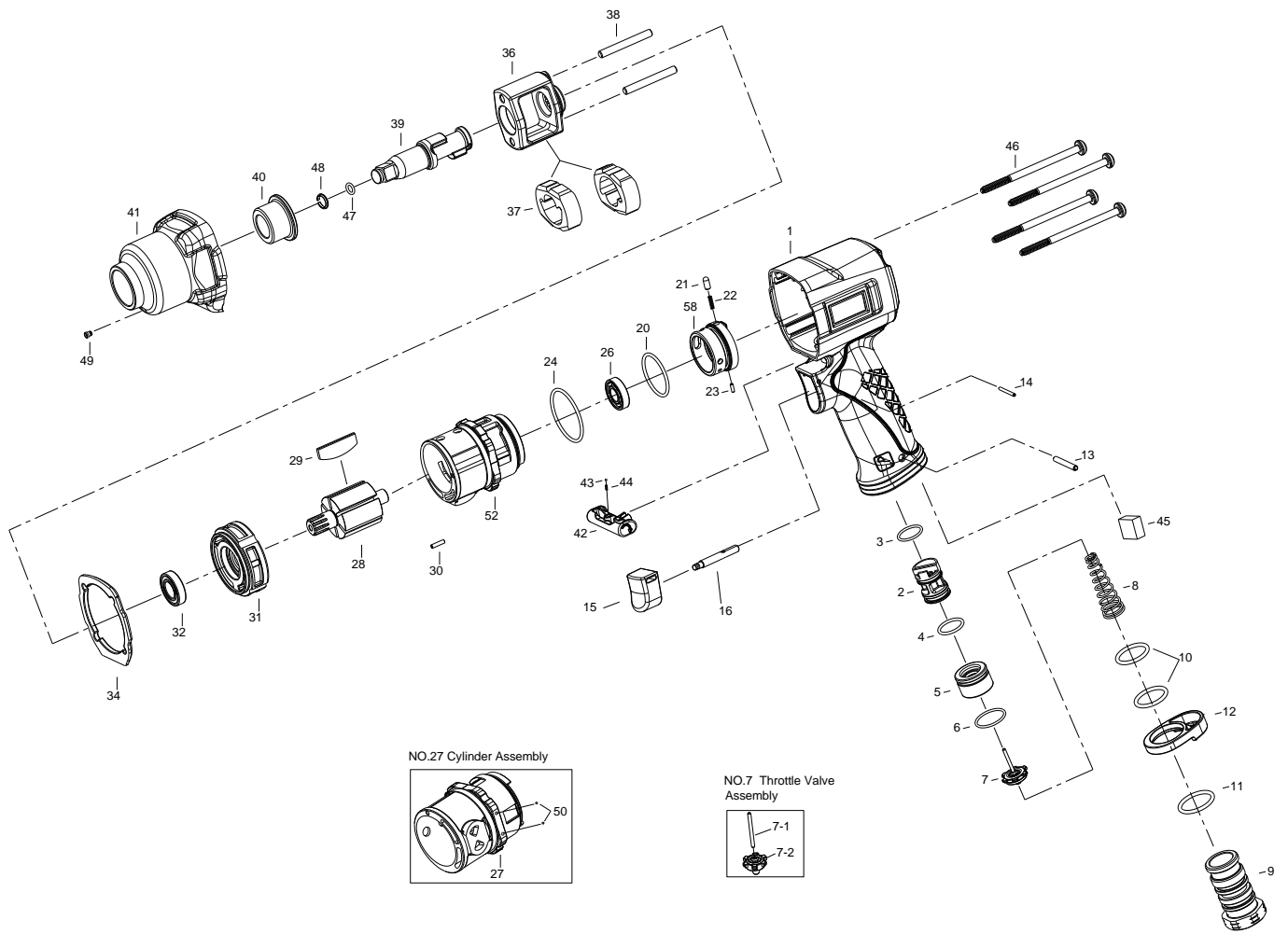


# 1/2" SQ. DR. SUPER DUTY IMPACT WRENCH



1482

| INDEX NO. | DESCRIPTION                               | REQ'D NO. | INDEX NO. | DESCRIPTION  | REQ'D NO. |
|-----------|---|-----------|-----------|--|-----------|
| 1         | Motor Housing                             | 1         | ★ 27      | Cylinder Assembly { incl.50 ( 2 ) }  | 1         |
| 2         | Reverse Valve                             | 1         | 28        | Rotor  | 1         |
| 3         | O-Ring                                    | 1         | 29        | Rotor Blade  | 6         |
| 4         | O-Ring                                    | 1         | 30        | Spring Pin   | 1         |
| 5         | Throttle Valve Seat                       | 1         | 31        | Front End Plate  | 1         |
| 6         | O-Ring                                    | 1         | 32        | Ball Bearing   | 1         |
| ★ 7       | Throttle Valve Assembly ( incl. 7-1.7-2 ) | 1         | 34        | Gasket   | 1         |
| ● 7-1     | Throttle Valve Pin                        | 1         | 36        | Hammer Frame   | 1         |
| ● 7-2     | Throttle Valve                            | 1         | 37        | Hammer   | 2         |
| 8         | Spring                                    | 1         | 38        | Hammer Pin   | 2         |
| 9         | Air Inlet                                 | 1         | 39        | Standard Anvil   | 1         |
| 10        | O-Ring                                    | 2         | ● 40      | Bushing  | 1         |
| 11        | O-Ring                                    | 1         | ★ 41      | Hammer Case Assembly ( incl.40.49 )  | 1         |
| 12        | Exhaust Deflector                         | 1         | 42        | Reverse Knob   | 1         |
| 13        | Spring Pin                                | 1         | 43        | Steel Ball   | 1         |
| 14        | Spring Pin                                | 1         | 44        | Steel Ball Spring  | 1         |
| ★ 15      | Trigger Assembly ( incl.16 )              | 1         | 45        | Muffler Element  | 1         |
| ● 16      | Trigger Pin                               | 1         | 46        | Screw  | 4         |
| 20        | O-Ring                                    | 1         | 47        | O-Ring   | 1         |
| 21        | Pin                                       | 1         | 48        | Socket Retainer  | 1         |
| 22        | Spring                                    | 1         | ● 49      | Grease Fitting   | 1         |
| 23        | Spring Pin                                | 1         | ● 50      | Steel Ball   | 2         |
| 24        | O-Ring                                    | 1         | 58        | Reverse Valve Knob   | 1         |
| 26        | Ball Bearing                              | 1         | TK        | Tune-Up Kit { incl.3.4.6.8.10 ( 2 ).11.20.22.24.29 ( 6 ).34.43.44.45.47.48 } |           |

★ Must be Purchased in Assembly Set

● Recommended not to be purchased alone due to assembly difficulty

20150130R1