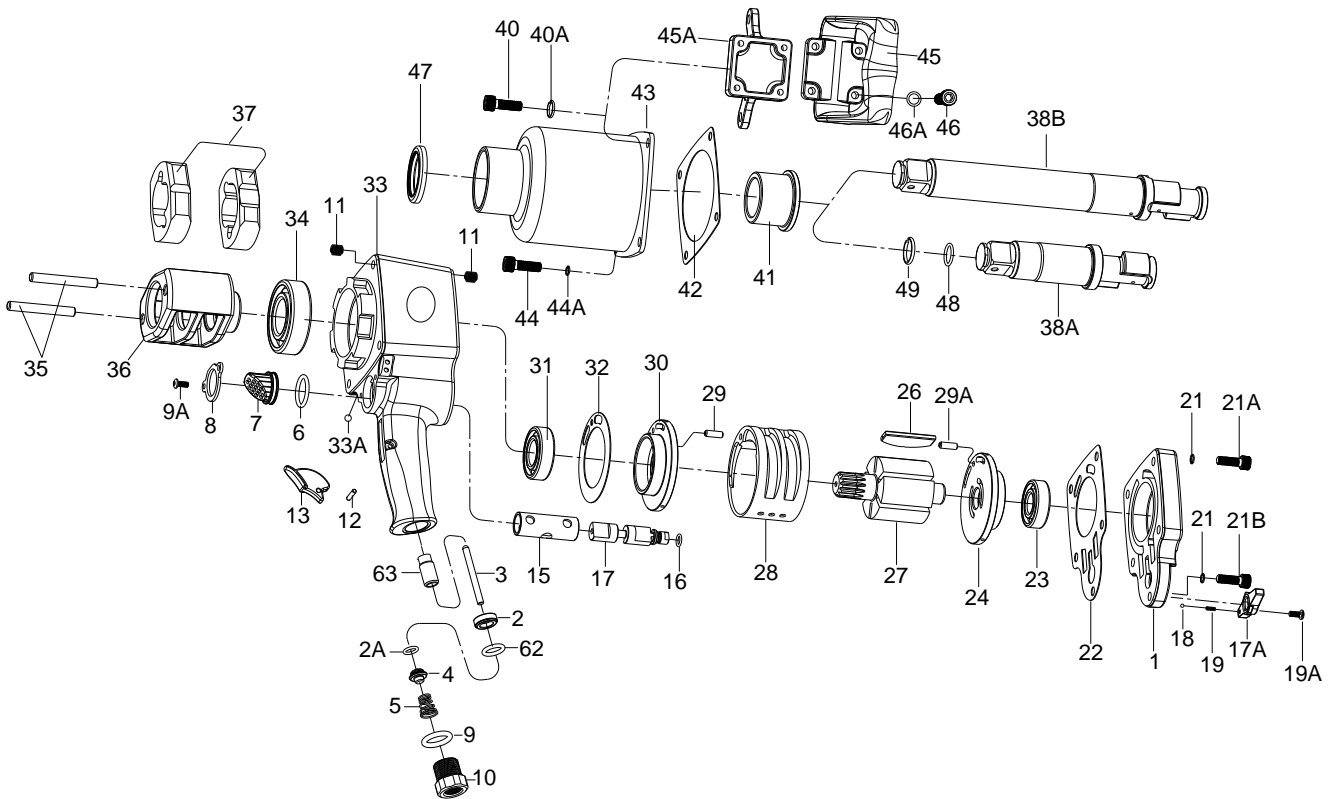


# 1" SQ. DR. SUPER DUTY IMPACT WRENCH



## 1837P\1837P-6

INDEX NO.	DESCRIPTION	REQ'D NO.	INDEX NO.	DESCRIPTION	REQ'D NO.
1	Backhead	1	29	Pin	1
2	Throttle Valve Seat	1	29A	Pin	1
2A	O-Ring	1	★ 30	End Plate Assembly ( incl.31 )	1
3	Throttle Valve Plunger	1	● 31	Bearing	1
4	Throttle Valve	1	★ 32	End Plate Gasket	1
5	Spring	1	★ 33	Housing Assembly { incl. 11 ( 9 ) .15.33A ( 4 ) .63 }	1
6	O-Ring	1	● 33A	Steel Ball	4
7	Exhaust Deflector	1	34	Bearing	1
8	Retainer	1	35	Hammer Pin	2
9	O-Ring	1	36	Hammer Frame	1
9A	Screw	2	37	Hammer	2
10	Air Inlet	1	38A	Standard Anvil ( for KI-1837P )	1
● 11	Heli-Coil	9	38B	6" Extended Anvil ( for KI-1837P-6 )	1
12	Trigger Pin	1	★ 40	Screw Assembly { incl. 40A ( 2 ) }	2
13	Trigger	1	● 40A	Washer	2
● 15	Reverse Valve Bushing	1	41	Bushing	1
16	O-Ring	1	42	Hammer Case Gasket	1
17	Reverse Valve	1	43	Hammer Case	1
17A	Reverse Valve Knob	1	★ 44	Screw Assembly { incl. 44A ( 2 ) }	2
18	Steel Ball	1	● 44A	Washer	2
19	Spring	1	45	Side Spade Handle	1
19A	Screw	1	45A	Support Handle	1
● 21	Washer	5	★ 46	Screw Assembly { incl. 46A ( 4 ) }	4
★ 21A	Screw Assembly { incl. 21 ( 4 ) }	4	● 46A	Washer	4
★ 21B	Screw Assembly ( incl. 21 )	1	47	Oil Seal	1
22	Gasket	1	48	O-Ring	1
● 23	Bearing	1	49	Socket Retainer	1
★ 24	Rear End Plate Assembly ( incl. 23 )	1	62	O-Ring	1
26	Rotor Blade	6	● 63	Bushing	1
27	Rotor	1			
28	Cylinder	1	TK	Tune-Up Kit { incl. 2A.5.6.9.16.18.19.22.23.26 ( 6 ) .31.32.34.42.48.49.62 }	

★ Must be Purchased in Assembly Set

● Recommended not to be purchased alone due to assembly difficulty