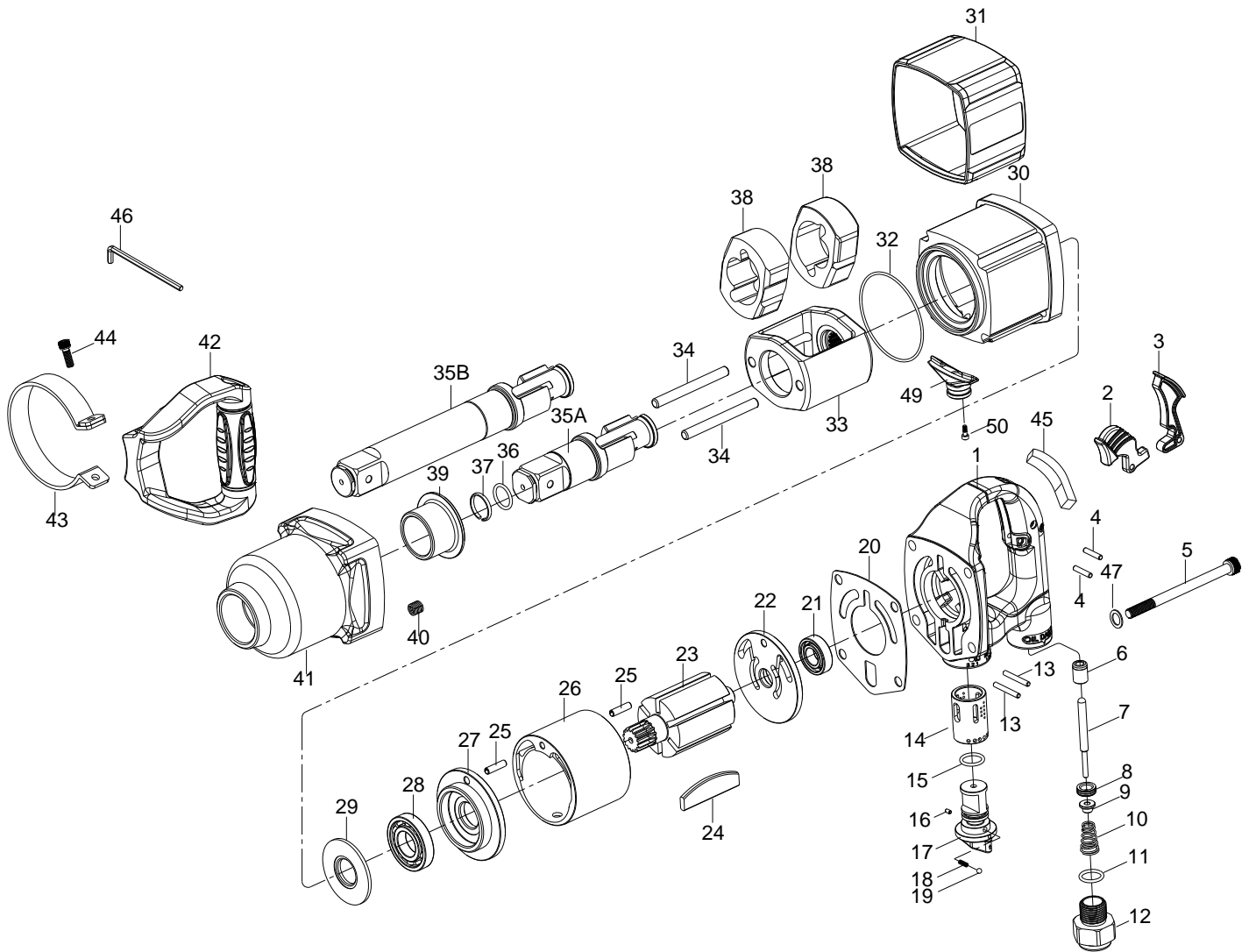


# 1" SQ. DR. SUPER DUTY IMPACT WRENCH



## 1838/1838-6

INDEX NO.	DESCRIPTION	REQ'D NO.	INDEX NO.	DESCRIPTION	REQ'D NO.
★ 1	Backhead Assembly ( incl. 6.14 )	1	27	End Plate	1
2	Inside Trigger ( Option )	1	28	Bearing	1
3	Outside Trigger ( Option )	1	29	Washer	1
4	Pin	2	30	Housing	1
5	Screw	4	31	Rubber Grip	1
● 6	Bushing	1	32	O-Ring	1
7	Throttle Valve Plunger	1	33	Hammer Frame	1
8	Throttle Valve Seat	1	34	Hammer Pin	2
9	Throttle Valve	1	35A	Standard Anvil ( for KI-1838 )	1
10	Spring	1	35B	6" Extended Anvil ( for KI-1838-6 )	1
11	O-Ring	1	36	O-Ring	1
12	Air Inlet	1	37	Socket Retainer	1
13	Pin	2	38	Hammer	2
● 14	Reverse Valve Bushing	1	● 39	Bushing	1
15	O-Ring	1	● 40	Heli-Coil	4
16	Pin	1	★ 41	Hammer Case Assembly { incl. 39.40 ( 4 ) }	1
17	Reverse Valve	1	42	Side Spade Handle	1
18	Spring	1	43	Strap	1
19	Ball	1	44	Screw	2
20	Gasket	1	45	Rubber Cap ( for Inside Trigger )	1
● 21	Bearing	1	46	Hex Key Wrench	1
★ 22	End Plate Assembly ( incl. 21 )	1	47	Washer	4
23	Rotor	1	49	Exhaust Deflector ( Option )	1
24	Rotor Blade	6	50	Screw ( for Exhaust Deflecto )	2
25	Pin	2			
26	Cylinder	1	TK	Tune-Up Kit { incl.10.11.15.18.19.20.24 ( 6 ).32.36.37 }	

★ Must be Purchased in Assembly Set

● Recommended not to be purchased alone due to assembly difficulty