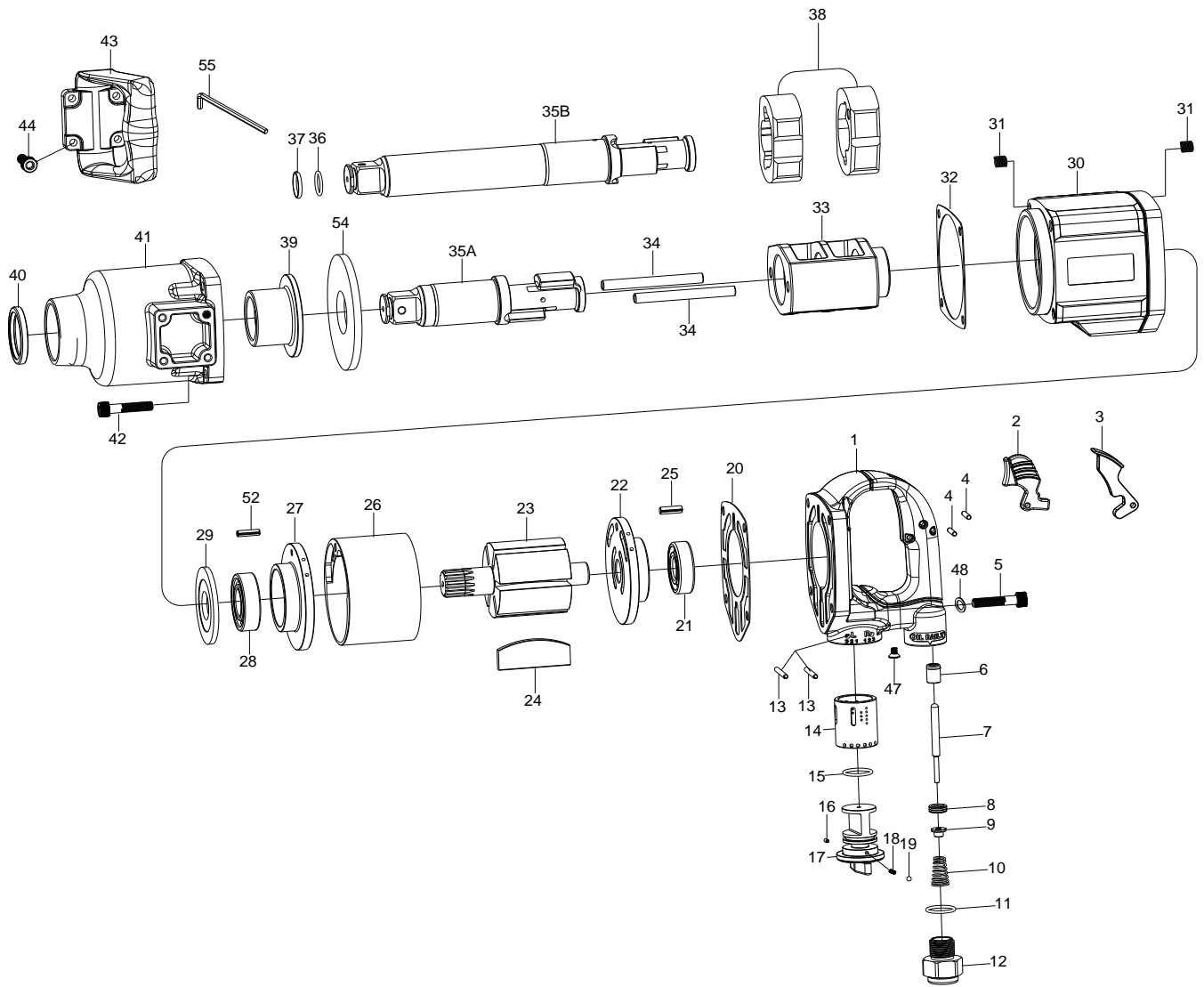


# 1" SQ. DR. SUPER DUTY IMPACT WRENCH



## 1845 1845-6

INDEX NO.	DESCRIPTION	REQ'D NO.	INDEX NO.	DESCRIPTION	REQ'D NO.
★ 1	Backhead Assembly ( incl. 6.14 )	1	★ 27	End Plate Assembly ( incl. 28 )	1
2	Inside Trigger ( Option )	1	● 28	Bearing	1
3	Outside Trigger ( Option )	1	29	Washer	1
4	Pin	2	30	Housing	1
5	Screw	4	31	Heil-Coil	8
● 6	Bushing	1	32	Gasket	1
7	Valve Stem	1	33	Hammer Frame	1
8	Throttle Valve Seat	1	34	Hammer Pin	2
9	Throttle Valve	1	35A	Standard Anvil ( for KI-1845 )	1
10	Spring	1	35B	6" Extended Anvil ( for KI-1845-6 )	1
11	O-Ring	1	36	O-Ring	1
12	Air Inlet	1	37	Socket Retainer	1
13	Pin	2	38	Hammer	2
● 14	Reverse Valve Bushing	1	● 39	Bushing	1
15	O-Ring	1	● 40	Seal	1
16	Pin	1	★ 41	Hammer Case Assembly ( incl. 39.40 )	1
17	Reverse Valve	1	42	Screw	4
18	Spring	1	43	Side Spade Handle	1
19	Steel Ball	1	44	Screw	4
20	Gasket	1	47	Screw	1
● 21	Bearing	1	48	Washer	4
★ 22	End Plate Assembly ( incl. 21 )	1	52	Pin	1
23	Rotor	1	54	Washer	1
24	Rotor Blade	6	55	Hex Key Wrench	1
25	Pin	1			
26	Cylinder	1	TK	Tune-Up Kit { incl.10.11.15.18.19.20.24 ( 6 ).32.36.37 }	

★ Must be Purchased in Assembly Set

● Recommended not to be purchased alone due to assembly difficulty

20150714R1