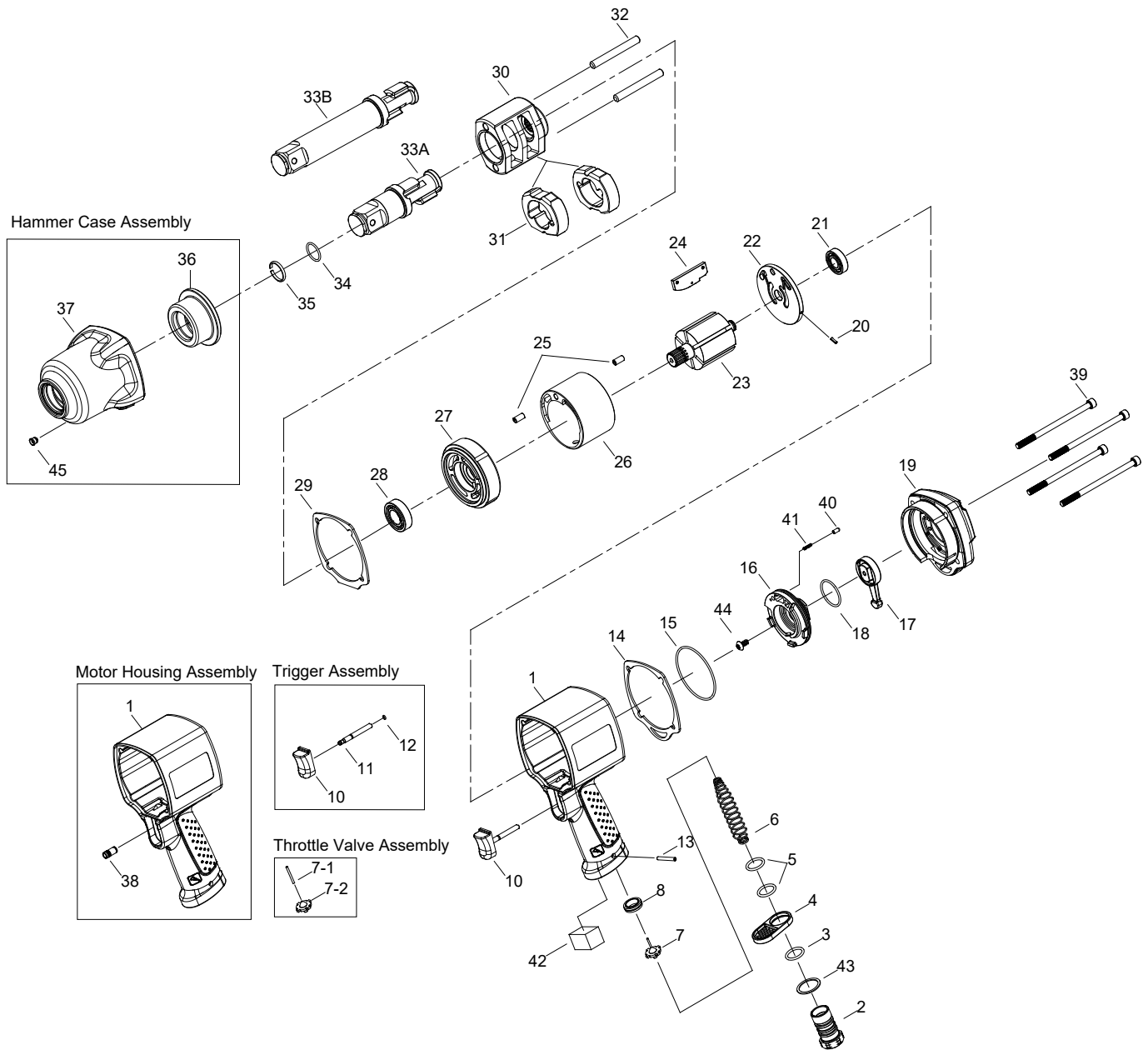


# 1" SQ. DR. SUPER DUTY AIR IMPACT WRENCH



1888-VG\_1888-VG-6

INDEX NO.	DESCRIPTION	REQ'D NO.	INDEX NO.	DESCRIPTION	REQ'D NO.
★ 1	Motor Housing Assembly ( incl. 38 )	1	24	Rotor Blade	6
2	Air Inlet	1	25	Spring Pin	2
3	O-Ring	1	26	Cylinder	1
4	Exhaust Deflector	1	27	Front End Plate	1
5	O-Ring	2	28	Ball Bearing	1
6	Spring	1	29	Gasket	1
★ 7	Throttle Valve Assembly ( incl. 7-1.7-2 )	1	30	Hammer Frame	1
● 7-1	Throttle Valve Pin	1	31	Hammer	2
● 7-2	Throttle Valve	1	32	Hammer Pin	2
8	Throttle Valve Seat	1	33A	Standard Anvil ( for KI-1888-VG )	1
★ 10	Trigger Assembly ( incl.11.12 )	1	33B	Extended Anvil ( for KI-1888-VG-6 )	1
● 11	Trigger Pin	1	34	O-Ring	1
● 12	O-Ring	1	35	Socket Retainer	1
13	Spring Pin	1	● 36	Bushing	1
14	Gasket	1	★ 37	Hammer Case Assembly ( incl.36.45 )	1
15	O-Ring	1	● 38	Bushing	1
16	Reverse Valve	1	39	Screw	4
17	Reverse Knob	1	40	Pin	1
18	O-Ring	1	41	Spring	1
19	Backhead	1	42	Muffer Element	1
20	Pin	1	43	Spacer	1
21	Ball Bearing	1	44	Screw	1
22	Rear End Plate	1	● 45	Grease Fitting	1
23	Rotor	1	TK	Tune-Up Kit { incl.3.5 ( 2 ).6.14.15.17.18.24 ( 6 ) .29.34.35.41.42 }	1

★ Must be Purchased in Assembly Set

● Recommended not to be purchased alone due to assembly difficulty

20210428R2