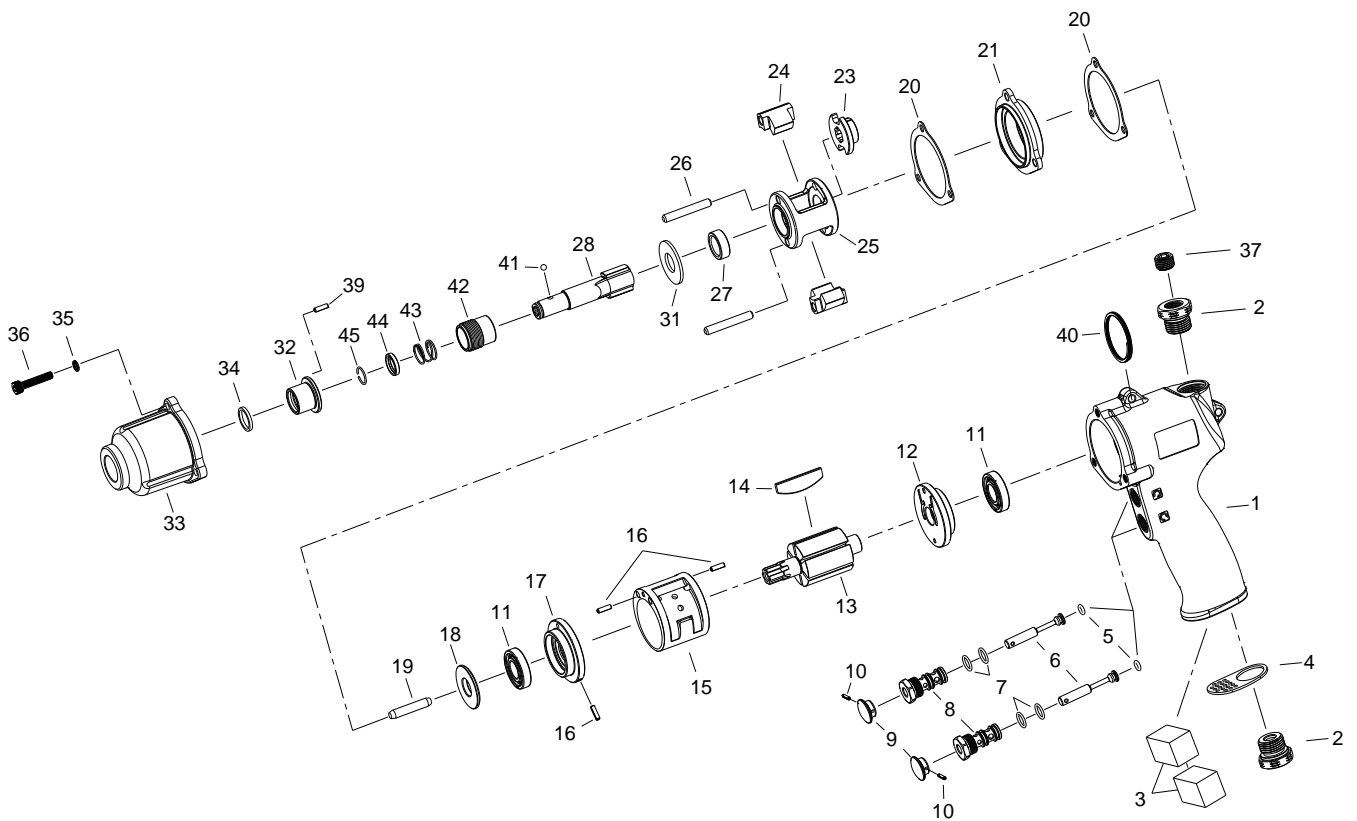


1/4" HEX. SUPER DUTY SCREWDRIVER



3291-P-QL

INDEX NO.	DESCRIPTION	REQ'D NO.	INDEX NO.	DESCRIPTION	REQ'D NO.
01	Motor Housing	1	23	Hammer Cam	1
02	Air Inlet	2	24	Hammer	2
03	Muffler Element	2	25	Hammer Frame	1
04	Exhaust Deflector	1	26	Hammer Pin	2
05	O-Ring	2	27	Bushing	1
06	Valve Stem	2	28	Standard Anvil	1
07	O-Ring	4	31	Washer	1
08	Regulating Valve	2	● 32	Bushing	1
09	Valve Lever	2	★ 33	Hammer Case Assembly (incl.32)	1
10	Spring	2	34	Felt Ring	1
11	Ball Bearing	2	35	Spring Washer	3
12	Rear End Plate	1	36	Screw	3
13	Rotor	1	37	Screw	1
14	Rotor Blade	6	39	Spring Pin	1
15	Cylinder	1	40	Hanger	1
16	Pin	3	41	Steel Ball	1
17	Front End Plate	1	42	Release Sleeve	1
18	Spacer	1	43	Spring	1
19	Pin	1	44	Washer	1
20	Hammer Case Gasket	2	45	Socket Retainer	1
21	Separator	1	TK	Tune-Up Kit { incl.3 (2).5 (2).7 (4).10 (2).14 (6).20 (2).41.43 }	

★ Must be Purchased in Assembly Set

● Recommended not to be purchased alone due to assembly difficulty

20131122R1