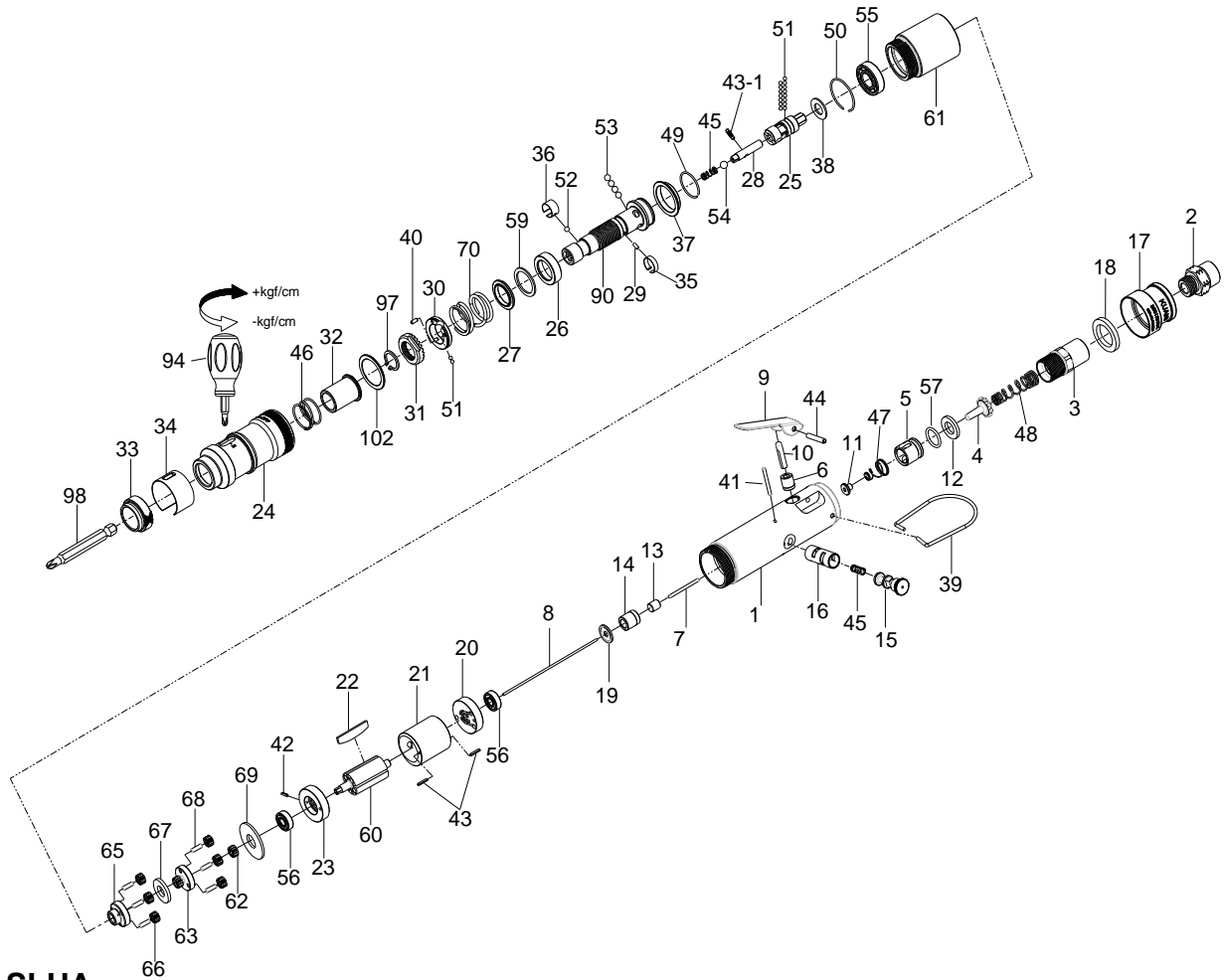


1/4" HEX. SUPER DUTY FULL-AUTO SHUT OFF AIR SCREWDRIVER



33011-SLUA

INDEX NO.	DESCRIPTION	REQ'D NO.	INDEX NO.	DESCRIPTION	REQ'D NO.
★ 1	Housing Assembly (incl.6.14.16)	1	39	Hanger	1
2	Air Inlet	1	40	Pin	1
3	Air Inlet	1	41	Pin	1
4	Throttle Valve	1	42	Spring Pin	1
5	Bushing	1	43	Spring Pin	2
● 6	Bushing	1	43-1	Pin	1
● 7	Pin	1	44	Spring Pin	1
8	Pin	1	45	Spring	2
9	Trigger	1	● 46	Spring	1
10	Valve Stem	1	47	Spring	1
11	Shot-Off Valve	1	48	Spring	1
12	Washer	1	49	Retainer	1
★ 13	Reverse Valve Assembly (incl.7)	1	50	Retainer	1
● 14	Bushing	1	51	Steel Ball	17
15	Reverse Valve	1	52	Steel Ball	1
● 16	Valve Bushing	1	53	Steel Ball	4
17	Exhaust Deflector	1	54	Steel Ball	1
18	Muffler Element	2	55	Ball Bearing	1
19	Washer	1	56	Ball Bearing	2
20	Rear End Plate	1	57	O-Ring	1
21	Cylinder	1	59	Gasket	1
22	Rotor Blade	4	60	Rotor	1
23	Front End Plate	1	61	Gear Housing	1
★ 24	Hammer Case Assembly (incl.32.33.46.102)	1	62	Main Gear	1
25	Cam Spindle	1	63	Rear Gear Head	1
26	Cam Ring	1	65	Front Gear Head	1
27	Spring Collar	1	66	Planet Gear	6
28	Driving Shaft	1	67	Washer	1
29	Pin	1	68	Pin	6
30	Adjustment Lock Ring	1	69	Washer	1
31	Adjustment Nut	1	70	Spring	1
● 32	Bushing	1	90	Standard Anvil	1
● 33	Retainer	1	94	Screwdriver	1
34	Adjustment Cover	1	97	Retainer	1
35	Band	1	98	Bit (Option)	
36	Band	1	● 102	Washer	1
37	Ball Holder	1	TK	Tune-Up Kit { incl.22 (4).36.45 (2).46.47.48.52.55.56 (2).57.70 }	
38	Washer	1			

★ Must be Purchased in Assembly Set

20140429R2

● Recommended not to be purchased alone due to assembly difficulty