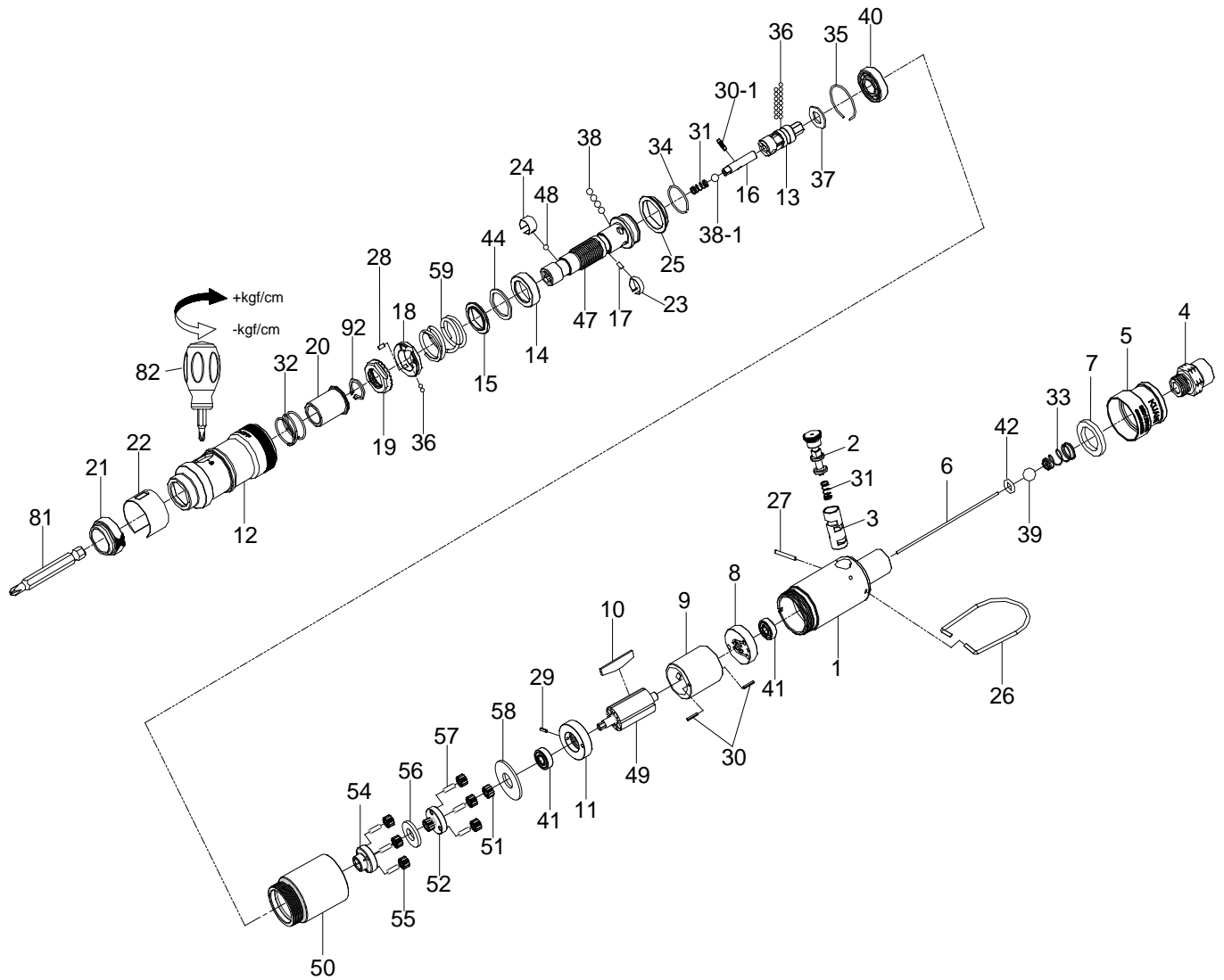


1/4" Hex. SUPER DUTY FULL-AUTO SHUT OFF AIR SCREWDRIVER



33011STUA

INDEX NO.	DESCRIPTION	REQ'D NO.	INDEX NO.	DESCRIPTION	REQ'D NO.
★ 1	Housing Assembly (incl.3)	1	31	Spring	2
2	Reverse Valve	1	32	Spring	1
● 3	Reverse Valve Bushing	1	33	Spring	1
4	Air Inlet	1	34	Retainer	1
5	Exhaust Deflector	1	35	Retainer	1
6	Throttle Valve Plunger	1	36	Steel Ball	17
7	Muffler Element	1	37	Washer	1
8	Rear End Plate	1	38	Steel Ball	4
9	Cylinder	1	38-1	Steel Ball	1
10	Rotor Blade	4	39	Steel Ball	1
11	Front End Plate	1	40	Ball Bearing	1
12	Hammer Case	1	41	Ball Bearing	2
13	Cam Spindle	1	42	O-Ring	1
14	Cam Ring	1	44	Gasket	1
15	Spring Collar	1	47	Standard Anvil	1
16	Driving Shaft	1	48	Steel Ball	1
17	Pin	1	49	Rotor	1
18	Adjustment Lock Ring	1	50	Gear Housing	1
19	Adjustment Nut	1	51	Planet Gear	1
20	Bushing	1	52	Work Spinder	1
21	Retainer	1	54	Work Spinder	1
22	Adjustment Cover	1	55	Planet Gear	6
23	Band	1	56	Washer	1
24	Band	1	57	Pin	6
25	Ball Holder	1	58	Washer	1
26	Hanger	1	59	Spring	1
27	Pin	1	81	Bit (Option)	
28	Pin	1	82	Screwdriver	1
29	Spring Pin	1	92	Retainer	1
30	Spring Pin	2	TK	Tune-Up Kit { incl.7.10 (4).31 (2).32.33.36 (17).38 (4).38-1.39.42.44.48.59 }	
30-1	Pin	1			

★ Must be Purchased in Assembly Set

● Recommended not to be purchased alone due to assembly difficulty

20140220R2