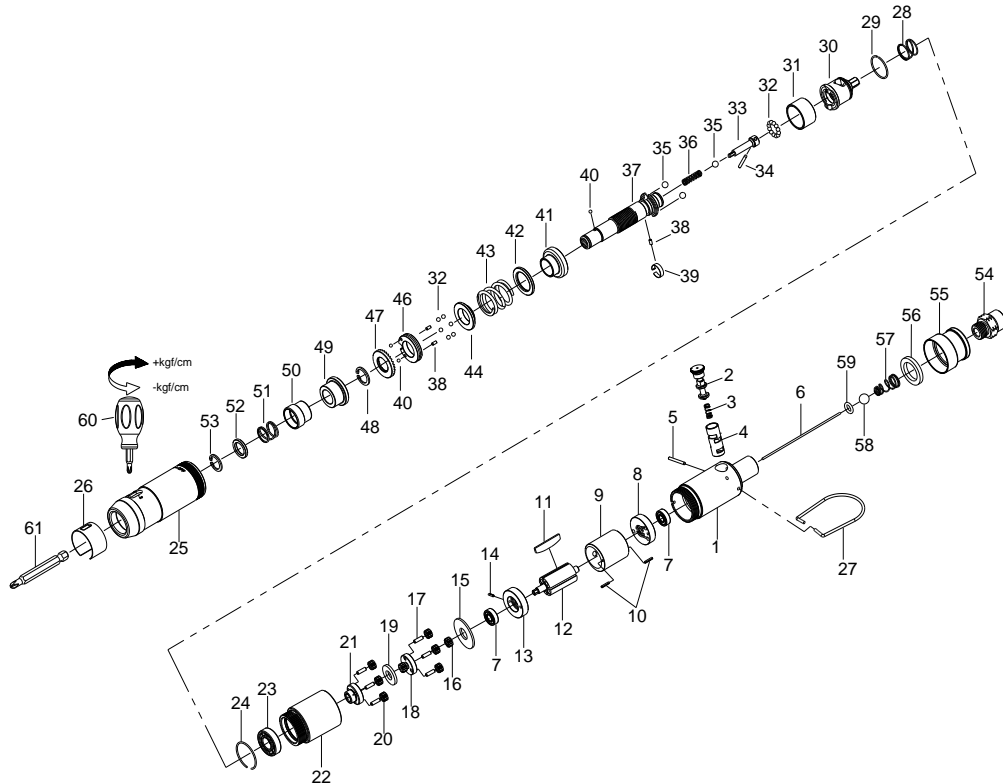


1/4" HEX. SUPER DUTY FULL-AUTO SHUT OFF AIR SCREWDRIVER



33011STWA

INDEX NO.	DESCRIPTION	REQ'D NO.	INDEX NO.	DESCRIPTION	REQ'D NO.
★ 1	Housing Assembly (incl. 4)	1	32	Steel Ball	18
2	Reverse Valve	1	33	Driving Shaft	1
3	Spring	1	34	Pin	1
● 4	Reverse Valve Bushing	1	35	Steel Ball	3
5	Pin	1	36	Spring	1
6	Throttle Valve Plunger	1	37	Standard Anvil	1
7	Bearing	2	38	Pin	3
8	Rear End Plate	1	39	Band	1
9	Cylinder	1	40	Steel Ball	3
10	Pin	2	41	Cam Ring	1
11	Rotor Blade	4	42	Washer	1
12	Rotor	1	43	Spring	1
13	Front End Plate	1	44	Spring Holder	1
14	Pin	1	46	Adjustment Nut	1
15	Spacer	1	47	Adjustment Lock Ring	1
16	Middle Gear	1	48	Retainer	1
17	Pin	6	49	Bushing	1
18	First Gear Cage	1	50	Bit Sleeve	1
19	Gear Cage Spacer	1	51	Spring	1
20	Planet Gear	6	52	Washer	1
21	Second Gear Cage	1	53	Retainer	1
22	Gear Housing	1	54	Air Inlet	1
23	Bearing	1	55	Exhaust Deflector	1
24	Retainer	1	56	Muffler Element	1
25	Hammer Case	1	57	Spring	1
26	Adjustment Cover	1	58	Steel Ball	1
27	Hanger	1	59	O-Ring	1
28	Spring	1	60	Screwdriver	1
29	Snap Ring	1	61	Bit (Option)	
30	Cam Spindle	1	TK	Tune-Up Kit { incl.3.11 (4),28,32 (18),35 (3),36,40 (3),43,51,57,58,59 }	
31	Ball Holder	1			

★ Must be Purchased in Assembly Set

● Recommended not to be purchased alone due to assembly difficulty

20140220R2