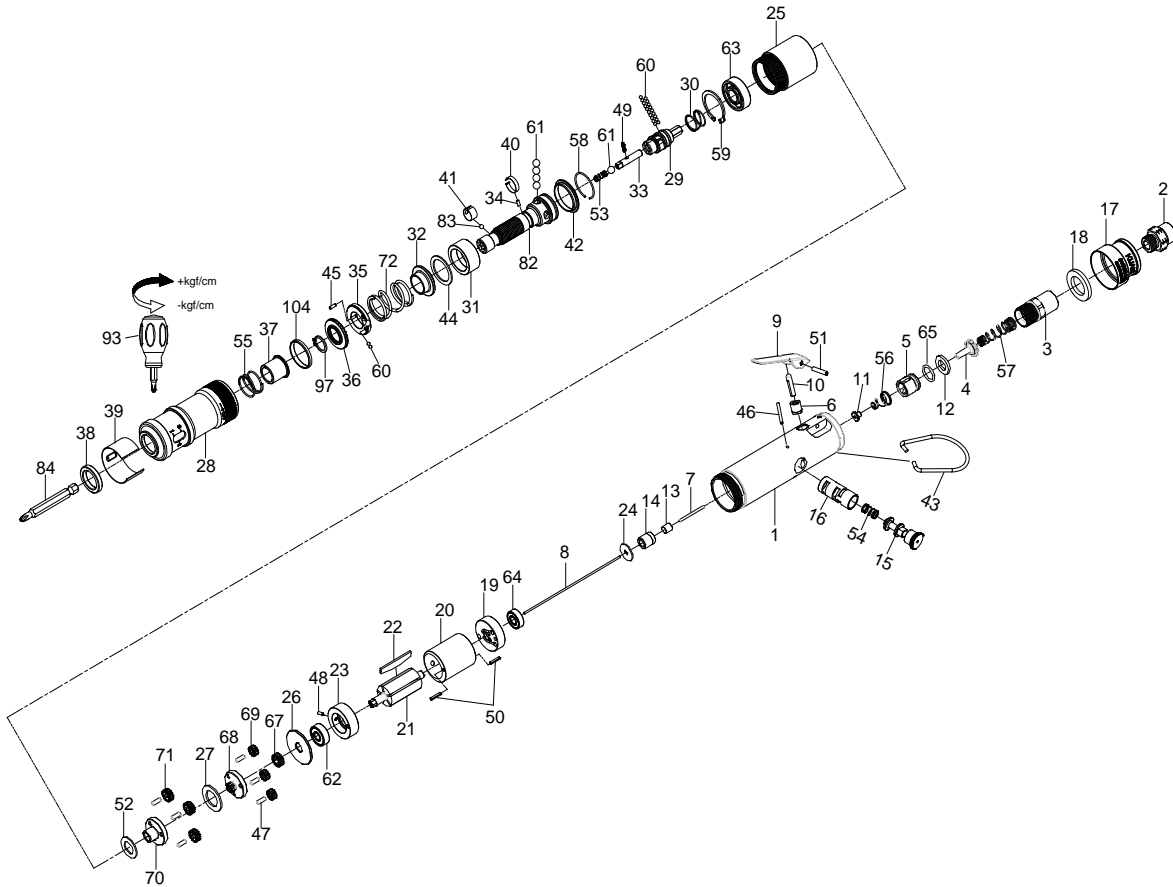


1/4" HEX. SUPER DUTY FULL-AUTO SHUT OFF AIR SCREWDRIVER



34008SLUA

INDEX NO.	DESCRIPTION	REQ'D NO.	INDEX NO.	DESCRIPTION	REQ'D NO.
★ 1	Housing Assembly (incl.6.14.16)	1	40	Band	1
2	Air Inlet	1	41	Band	1
3	Air Inlet	1	42	Ball Holder	1
4	Throttle Valve	1	43	Hanger	1
5	Bushing	1	44	Gasket	1
● 6	Bushing	1	45	Pin	1
● 7	Pin	1	46	Pin	1
8	Throttle Valve Plunger	1	47	Pin	6
9	Trigger	1	48	Spring Pin	1
10	Valve Stem	1	49	Pin	1
11	Shut-Off Valve	1	50	Spring Pin	2
12	Washer	1	51	Spring Pin	1
★ 13	Reverse Valve Assembly (incl.7)	1	52	Washer	1
● 14	Bushing	1	53	Spring	1
15	Reverse Valve	1	54	Spring	1
● 16	Valve Bushing	1	● 55	Spring	1
17	Exhaust Deflector	1	56	Spring	1
18	Muffler Element	1	57	Spring	1
19	Rear End Plate	1	58	Retainer	1
20	Cylinder	1	59	Retainer	1
21	Rotor	1	60	Steel Ball	21
22	Rotor Blade	5	61	Steel Ball	5
23	Front End Plate	1	62	Ball Bearing	1
24	Washer	1	63	Ball Bearing	1
25	Gear Housing	1	64	Ball Bearing	1
26	Washer	1	65	O-Ring	1
27	Washer	1	67	Main Gear	1
★ 28	Hammer Case Assembly (incl.37.38.55.104)	1	68	Rear Gear Head	1
29	Cam Spindle	1	69	Planet Gear	3
30	Spring	1	70	Front Gear Head	1
31	Cam Ring	1	71	Planet Gear	3
32	Spring Collar	1	72	Spring	1
33	Driving Shaft	1	82	Standard Anvil	1
34	Pin	1	83	Steel Ball	1
35	Adjustment Lock Ring	1	84	Bit (Option)	
36	Adjustment Nut	1	93	Screwdriver	1
● 37	Bushing	1	97	Retainer	1
● 38	Retainer	1	● 104	Washer	1
39	Adjustment Cover	1	TK	Tune-Up Kit { incl.18.22 (5).30.44.53.54.55.56.57.60 (21). 61 (5).65.72.83 }	

★ Must be Purchased in Assembly Set

● Recommended not to be purchased alone due to assembly difficulty

20161108R2