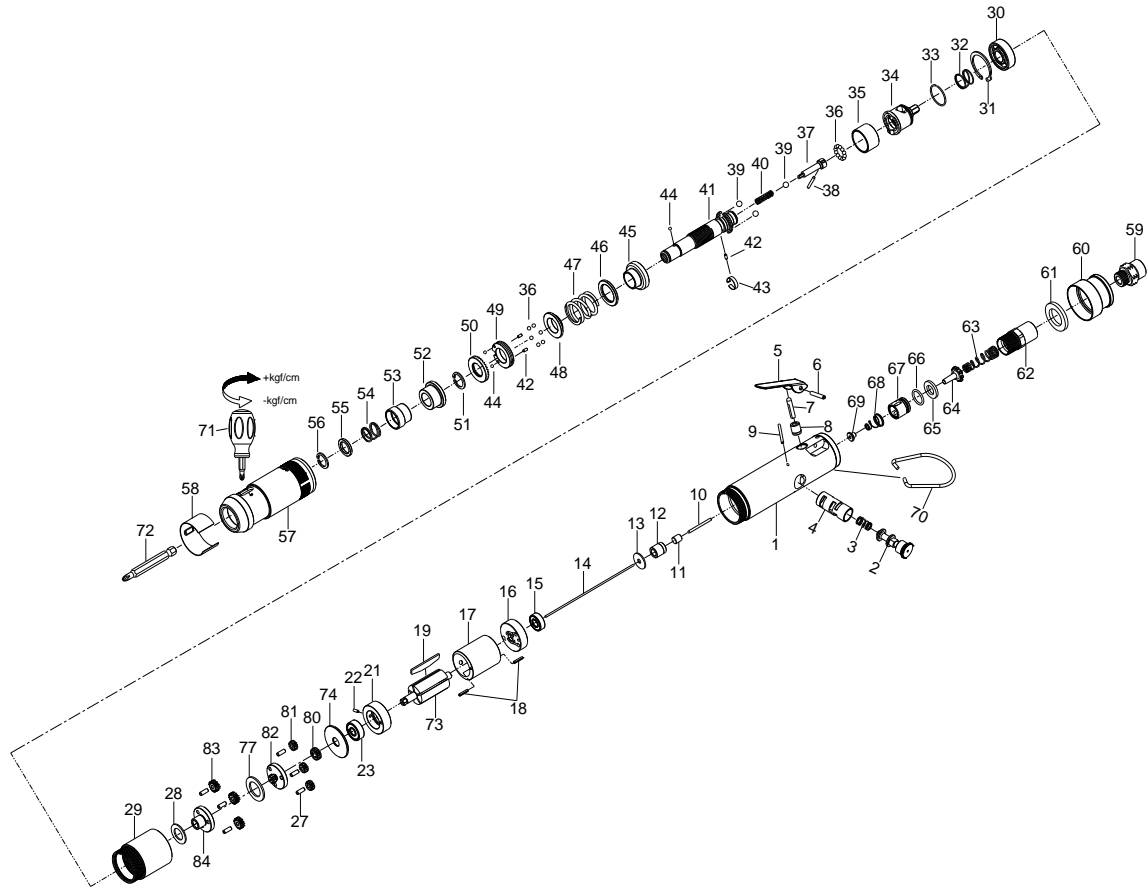


# 1/4" HEX. SUPER DUTY FULL-AUTO SHUT OFF AIR SCREWDRIVER



## 34008SLWA

INDEX NO.	DESCRIPTION	REQ'D NO.	INDEX NO.	DESCRIPTION	REQ'D NO.
★ 01	Housing Assembly ( incl.4 )	1	44	Steel Ball	3
02	Reverse Valve	1	45	Central Clutch	1
03	Spring	1	46	Spacer	1
● 04	Valve Bushing	1	47	Torque Setting Spring	1
05	Trigger	1	48	Spring Collar	1
06	Spring Pin	1	49	Adjustment Lock Ring	1
07	Valve Stem	1	50	Adjustment Nut	1
08	Bushing	1	51	Retainer	1
09	Pin	1	52	Bushing	1
10	Pin	1	53	Release Sleeve	1
11	Shut-off Valve	1	54	Spring	1
12	Rear Plate Space	1	55	Washer	1
13	Washer	1	56	Retainer	1
14	Throttle Valve Plunger	1	57	Hammer Case	1
15	Ball Bearing	1	58	Rubber Ring	1
16	Rear End Plate	1	59	Air Inlet	1
17	Cylinder	1	60	Exhaust Deflector	1
18	Spring Pin	2	61	Muffler Element	1
19	Rotor Blade	5	62	Air Inlet	1
21	Front End Plate	1	63	Spring	1
22	Spring Pin	1	64	Throttle Valve	1
23	Ball Bearing	1	65	Washer	1
27	Pin	6	66	O-Ring	1
28	Washer	1	67	Bushing	1
29	Gear Housing	1	68	Spring	1
30	Ball Bearing	1	69	Handle Bushing	1
31	Retainer	1	70	Hanger	1
32	Spring	1	71	Screwdriver	1
33	Retainer	1	72	Bit ( Option )	
34	Rear Clutch	1	73	Rotor	1
35	Ball Holder	1	74	Washer	1
36	Steel Ball	18	77	Washer	1
37	Pilot Pin	1	80	Pinion Gear	1
38	Pin	1	81	Planet Gear	3
39	Steel Ball	3	82	Rear Gear Head	1
40	Spring	1	83	Planet Gear	3
41	Standard Anvil	1	84	Front Gear Head	1
42	Pin	3		Tune-Up Kit { incl. 3.19 ( 5 ).32.36 ( 18 ).39 ( 3 ).40.44 ( 3 ).47.	
43	Band	1	TK	54.61.63.66.68 }	

★ Must be Purchased in Assembly Set

● Recommended not to be purchased alone due to assembly difficulty