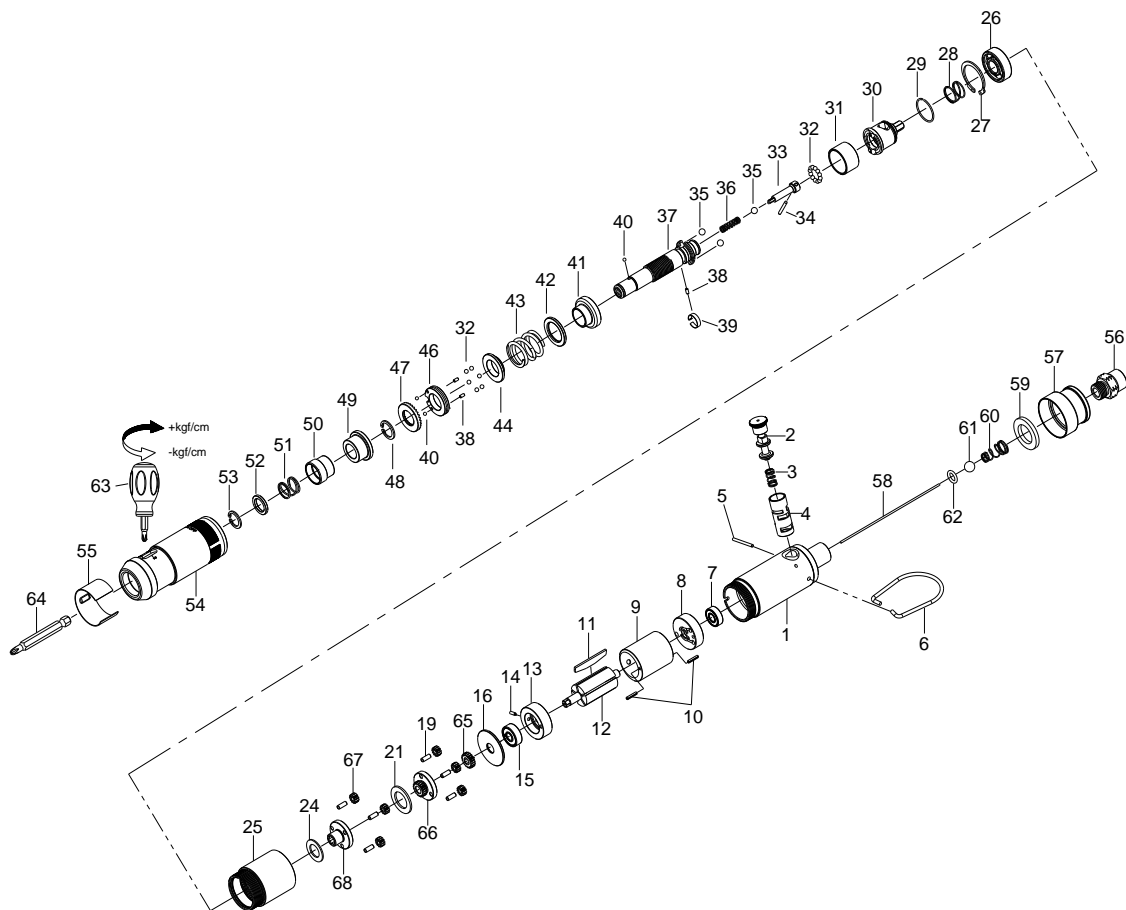


# 1/4" HEX. SUPER DUTY FULL-AUTO SHUT OFF AIR SCREWDRIVER



## 34015STWA

INDEX NO.	DESCRIPTION	REQ'D NO.	INDEX NO.	DESCRIPTION	REQ'D NO.
★ 1	Housing Assembly ( incl. 4 )	1	38	Pin	3
2	Reverse Valve	1	39	Band	1
3	Spring	1	40	Steel Ball	3
● 4	Reverse Valve Bushing	1	41	Cam Ring	1
5	Pin	1	42	Washer	1
6	Hanger	1	43	Spring	1
7	Bearing	1	44	Spring Holder	1
8	Rear End Plate	1	46	Adjustment Nut	1
9	Cylinder	1	47	Adjustment Lock Ring	1
10	Pin	2	48	Retainer	1
11	Rotor Blade	5	49	Bushing	1
12	Rotor	1	50	Bit Sleeve	1
13	Front End Plate	1	51	Spring	1
14	Pin	1	52	Washer	1
15	Bearing	1	53	Retainer	1
16	Spacer	1	54	Hammer Case	1
19	Pin	6	55	Adjustment Cover	1
21	Gear Cage Spacer	1	56	Air Inlet	1
24	Washer	1	57	Exhaust Deflector	1
25	Gear Housing	1	58	Throttle Valve Plunger	1
26	Bearing	1	59	Muffler Element	1
27	Retainer	1	60	Spring	1
28	Spring	1	61	Steel Ball	1
29	Snap Ring	1	62	O-Ring	1
30	Cam Spindle	1	63	Screwdriver	1
31	Ball Holder	1	64	Bit ( Option )	1
32	Steel Ball	18	65	Middle Gear	1
33	Driving Shaft	1	66	First Gear Cage	1
34	Pin	1	67	Planet Gear	6
35	Steel Ball	3	68	Second Gear Cage	1
36	Spring	1	TK	Tune-Up Kit { incl. 3.7 .11 ( 5 ) .15.26.28.30.32 ( 18 ) .33.34 .35 ( 3 ) .36.38 ( 3 ) .39.40 ( 3 ) .43.47.51.57.58.59.60.61.62 }	
37	Standard Anvil	1			

★ Must be Purchased in Assembly Set

● Recommended not to be purchased alone due to assembly difficulty