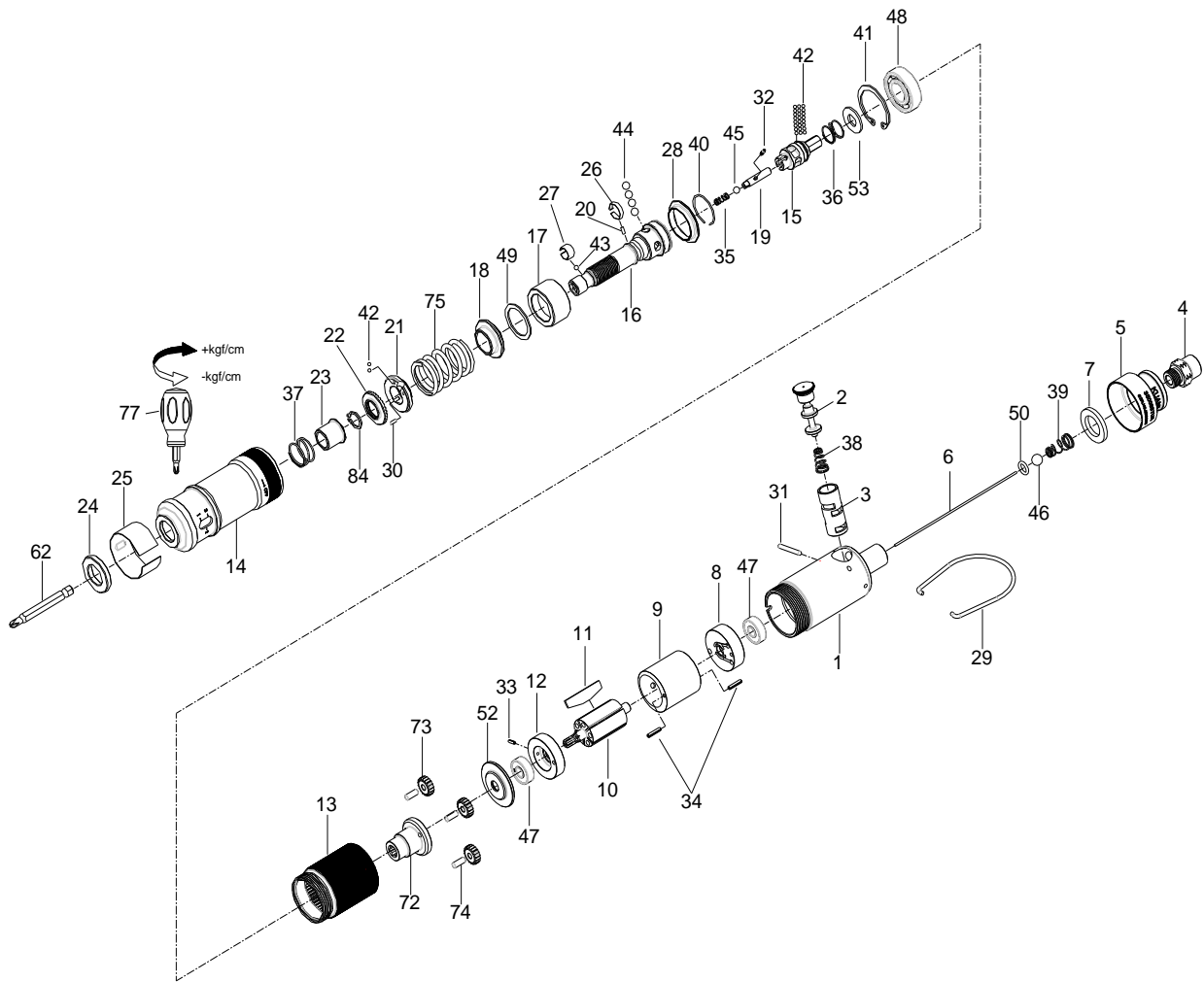


# 1/4" HEX. SUPER DUTY FULL-AUTO SHUT OFF AIR SCREWDRIVER



## 35017STUA

| INDEX NO. | DESCRIPTION                 | REQ'D NO. | INDEX NO. | DESCRIPTION   | REQ'D NO. |
|-----------|-----------------------------|-----------|-----------|---|-----------|
| ★ 1       | Housing Assembly ( incl.3 ) | 1         | 31        | Pin   | 1         |
| 2         | Reverse Valve               | 1         | 32        | Pin   | 1         |
| ● 3       | Reverse Valve Bushing       | 1         | 33        | Spring Pin  | 1         |
| 4         | Air Inlet                   | 1         | 34        | Spring Pin  | 2         |
| 5         | Exhaust Deflector           | 1         | 35        | Spring  | 1         |
| 6         | Throttle Valve Plunger      | 1         | 36        | Spring  | 1         |
| 7         | Muffler Element             | 1         | 37        | Spring  | 1         |
| 8         | Rear End Plate              | 1         | 38        | Spring  | 1         |
| 9         | Cylinder                    | 1         | 39        | Spring  | 1         |
| 10        | Rotor                       | 1         | 40        | Retainer  | 1         |
| 11        | Rotor Blade                 | 5         | 41        | Retainer  | 1         |
| 12        | Front End Plate             | 1         | 42        | Steel Ball  | 24        |
| 13        | Gear Housing                | 1         | 43        | Steel Ball  | 1         |
| 14        | Hammer Case                 | 1         | 44        | Steel Ball  | 4         |
| 15        | Cam Spindle                 | 1         | 45        | Steel Ball  | 1         |
| 16        | Standard Anvil              | 1         | 46        | Steel Ball  | 1         |
| 17        | Cam Ring                    | 1         | 47        | Ball Bearing  | 2         |
| 18        | Spring Collar               | 1         | 48        | Ball Bearing  | 1         |
| 19        | Driving Shaft               | 1         | 49        | Gasket  | 1         |
| 20        | Pin                         | 1         | 50        | O-Ring  | 1         |
| 21        | Adjustment Nut              | 1         | 52        | Washer  | 1         |
| 22        | Adjustment Lock Ring        | 1         | 53        | Washer  | 1         |
| 23        | Bushing                     | 1         | 62        | Bit ( Option )  |           |
| 24        | Retainer                    | 1         | 72        | Work Spinder  | 1         |
| 25        | Adjustment Cover            | 1         | 73        | Planet Gear   | 3         |
| 26        | Band                        | 1         | 74        | Pin   | 3         |
| 27        | Band                        | 1         | 75        | Spring  | 1         |
| 28        | Ball Holder                 | 1         | 77        | Screwdriver   | 1         |
| 29        | Hanger                      | 1         | 84        | Retainer  | 1         |
| 30        | Pin                         | 1         | TK        | Tune-Up Kit { incl.11( 5 ) .35.36.37.38.39.42 ( 24 ).43.44 ( 4 ).45.46.49.50.75 } |           |

★ Must be Purchased in Assembly Set

● Recommended not to be purchased alone due to assembly difficulty

20140220R2