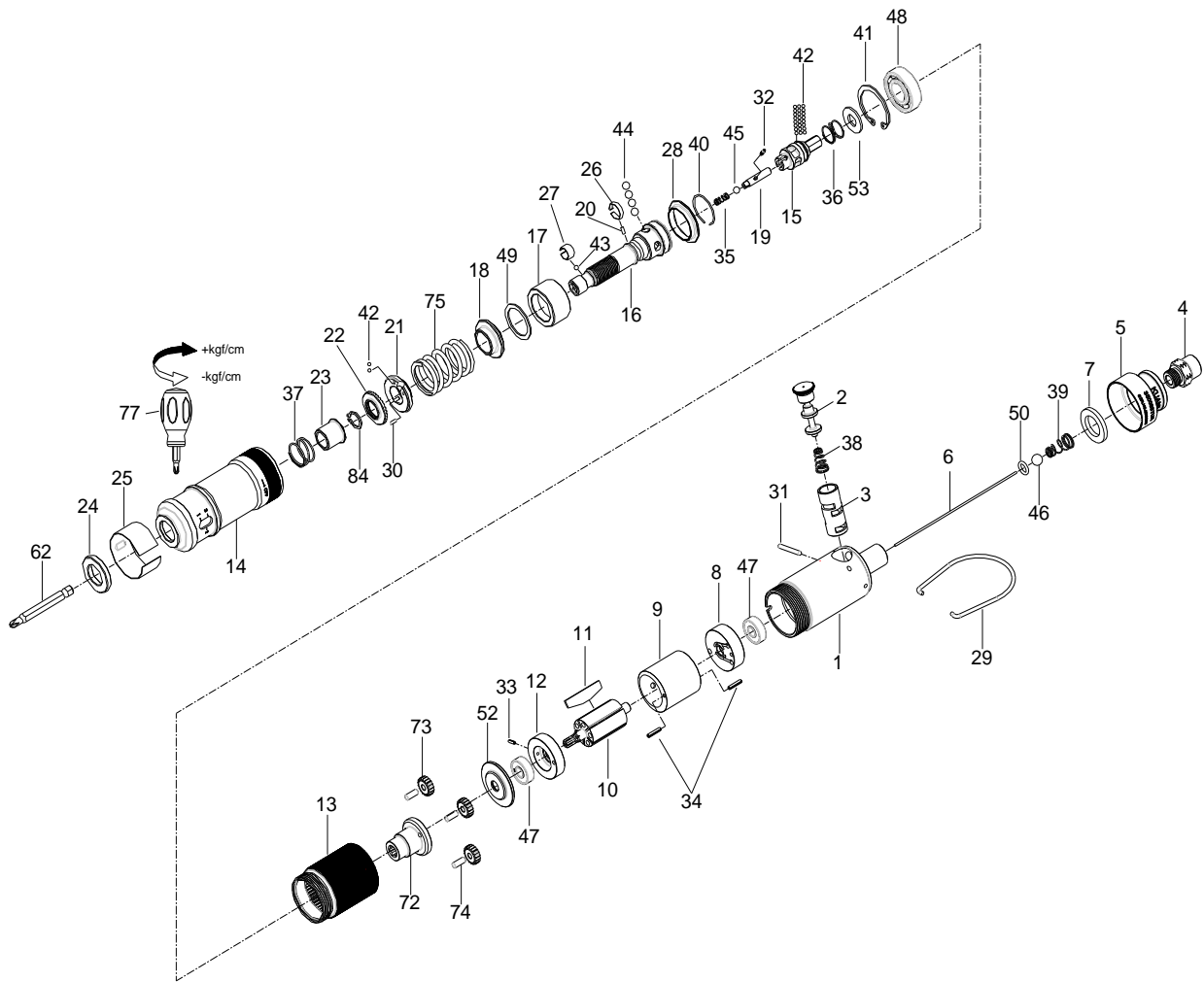


1/4" HEX. SUPER DUTY FULL-AUTO SHUT OFF AIR SCREWDRIVER



35017STUA

INDEX NO.	DESCRIPTION	REQ'D NO.	INDEX NO.	DESCRIPTION	REQ'D NO.
★ 1	Housing Assembly (incl.3)	1	31	Pin	1
2	Reverse Valve	1	32	Pin	1
● 3	Reverse Valve Bushing	1	33	Spring Pin	1
4	Air Inlet	1	34	Spring Pin	2
5	Exhaust Deflector	1	35	Spring	1
6	Throttle Valve Plunger	1	36	Spring	1
7	Muffer Element	1	37	Spring	1
8	Rear End Plate	1	38	Spring	1
9	Cylinder	1	39	Spring	1
10	Rotor	1	40	Retainer	1
11	Rotor Blade	5	41	Retainer	1
12	Front End Plate	1	42	Steel Ball	24
13	Gear Housing	1	43	Steel Ball	1
14	Hammer Case	1	44	Steel Ball	4
15	Cam Spindle	1	45	Steel Ball	1
16	Standard Anvil	1	46	Steel Ball	1
17	Cam Ring	1	47	Ball Bearing	2
18	Spring Collar	1	48	Ball Bearing	1
19	Driving Shaft	1	49	Gasket	1
20	Pin	1	50	O-Ring	1
21	Adjustment Nut	1	52	Washer	1
22	Adjustment Lock Ring	1	53	Washer	1
23	Bushing	1	62	Bit (Option)	
24	Retainer	1	72	Work Spinder	1
25	Adjustment Cover	1	73	Planet Gear	3
26	Band	1	74	Pin	3
27	Band	1	75	Spring	1
28	Ball Holder	1	77	Screwdriver	1
29	Hanger	1	84	Retainer	1
30	Pin	1	TK	Tune-Up Kit { incl.11(5) .35.36.37.38.39.42 (24).43.44 (4).45.46.49.50.75 }	

★ Must be Purchased in Assembly Set

● Recommended not to be purchased alone due to assembly difficulty

20140220R2